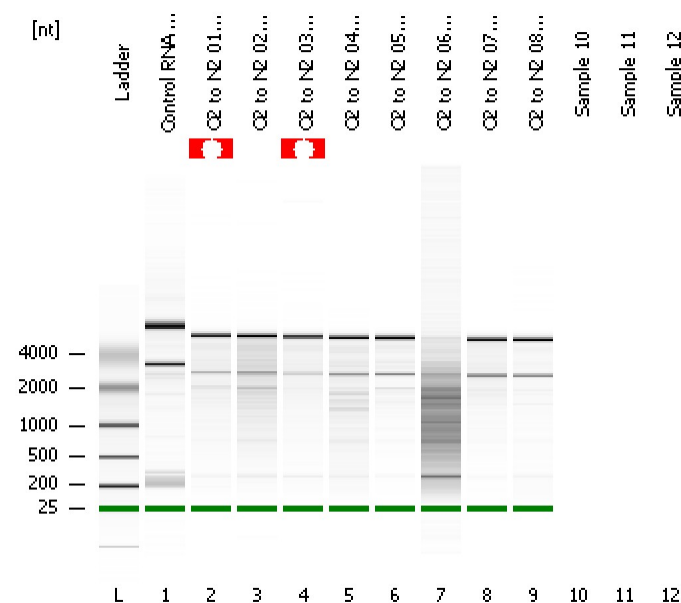


Assay Class: Prokaryote Total RNA Nano
Data Path: D:\...rokaryote Total RNA Nano_DE24802235_2011-03-17_18-23-00.xad

Created: 3/17/2011 6:23:00 PM
Modified: 3/17/2011 6:42:25 PM

Electrophoresis File Run Summary



Instrument Information:

Instrument Name: Ann's baby
Serial#: DE24802235
Firmware: C.01.069
Type: G2938B

Assay Information:

Assay Origin Path: D:\Program Files\Agilent\2100 bioanalyzer\2100 expert\assays\RNA\Prokaryote Total RNA Nano Series II.xsy

Assay Class: Prokaryote Total RNA Nano

Version: 2.5

Assay Comments: Total RNA Analysis ng sensitivity (Prokaryote)

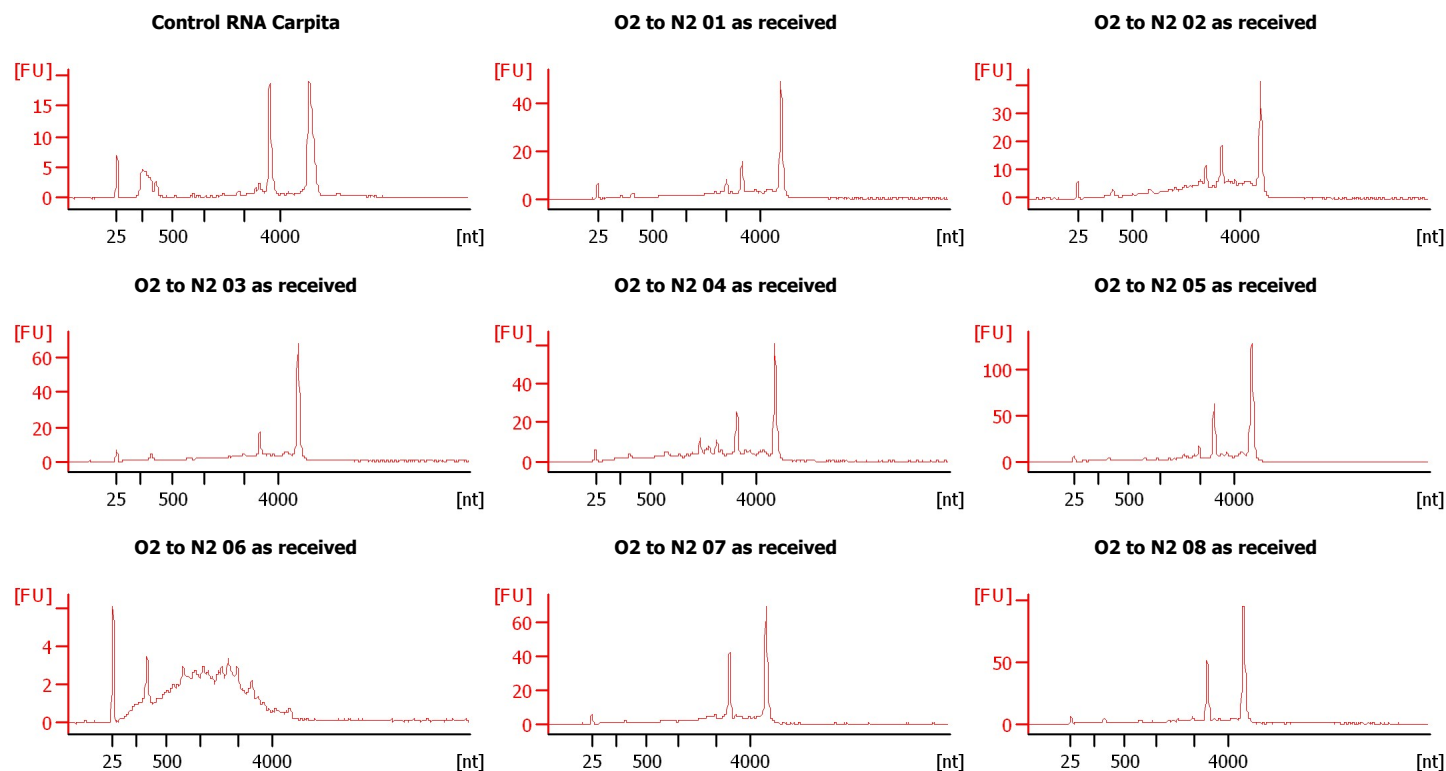
© Copyright 2003 - 2009 Agilent Technologies, Inc.

Chip Information:

Chip Lot #:

Reagent Kit Lot #:

Chip Comments:



Assay Class: Prokaryote Total RNA Nano
Data Path: D:\...rokaryote Total RNA Nano_DE24802235_2011-03-17_18-23-00.xad

Created: 3/17/2011 6:23:00 PM
Modified: 3/17/2011 6:42:25 PM

Electrophoresis File Run Summary (Chip Summary)

Sample Name	Sample Comment	Status	Result Label	Result Color
Control RNA Carpita		✓		
O2 to N2 01 as received		✓		
O2 to N2 02 as received		✓		
O2 to N2 03 as received		✓		
O2 to N2 04 as received		✓		
O2 to N2 05 as received		✓		
O2 to N2 06 as received		✓		
O2 to N2 07 as received		✓		
O2 to N2 08 as received		✓		
Sample 10				
Sample 11				
Sample 12				

Chip Lot #**Reagent Kit Lot #****Chip Comments :**

Assay Class: Prokaryote Total RNA Nano
Data Path: D:\...rokaryote Total RNA Nano_DE24802235_2011-03-17_18-23-00.xad

Created: 3/17/2011 6:23:00 PM
Modified: 3/17/2011 6:42:25 PM

Electrophoresis Assay Details

General Analysis Settings

Number of Available Sample and Ladder Wells (Max.) : 13

Minimum Visible Range [s] : 17

Maximum Visible Range [s] : 70

Start Analysis Time Range [s] : 19

End Analysis Time Range [s] : 69

Ladder Concentration [ng/μl] : 150

Lower Marker Concentration [ng/μl] : 0

Upper Marker Concentration [ng/μl] : 0

Used Lower Marker for Quantitation

Standard Curve Fit is Logarithmic

Show Data Aligned to Lower Marker

Integrator Settings

Integration Start Time [s] : 19

Integration End Time [s] : 69

Slope Threshold : 0.6

Height Threshold [FU] : 0.5

Area Threshold : 0.2

Width Threshold [s] : 0.5

Baseline Plateau [s] : 6

Filter Settings

Filter Width [s] : 0.5

Polynomial Order : 4

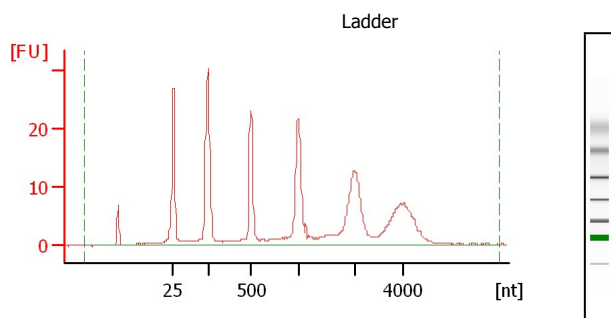
Ladder

Ladder Peak	Size
1	25
2	200
3	500
4	1000
5	2000
6	4000

Assay Class: Prokaryote Total RNA Nano
 Data Path: D:\...rokaryote Total RNA Nano_DE24802235_2011-03-17_18-23-00.xad

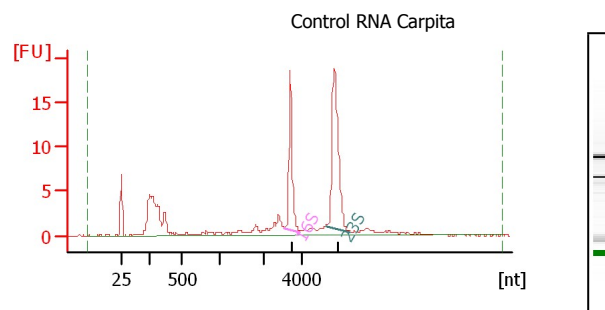
Created: 3/17/2011 6:23:00 PM
 Modified: 3/17/2011 6:42:25 PM

Electropherogram Summary



Overall Results for Ladder

RNA Area: 259.2
 RNA Concentration: 150 ng/μl

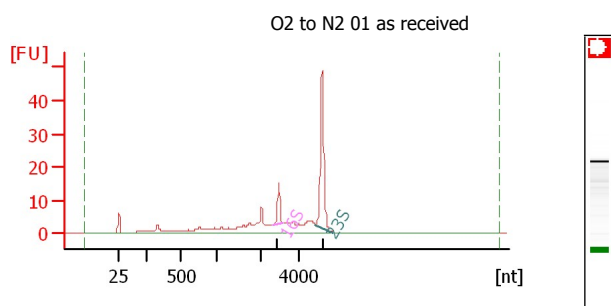


Overall Results for sample 1 : Control RNA Carpita

RNA Area: 112.5
 RNA Concentration: 65 ng/μl
 rRNA Ratio [23s / 16s]: 1.8
 RNA Integrity Number (RIN): 8.8 (B.02.07)

Fragment table for sample 1 : Control RNA Carpita

Name	Start Size [nt]	End Size [nt]	Area	% of total Area
16S	3,121	3,901	17.9	15.9
23S	5,223	6,544	32.0	28.5

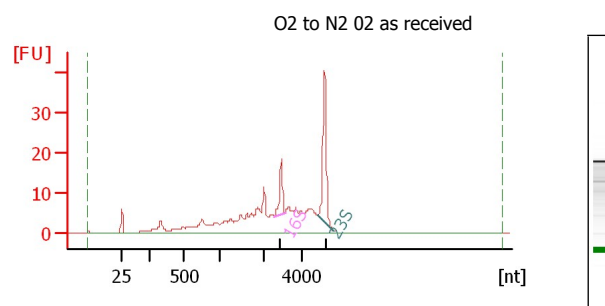


Overall Results for sample 2 : O2 to N2 01 as received

RNA Area: 169.9
 RNA Concentration: 98 ng/μl
 rRNA Ratio [23s / 16s]: 4.4
 RNA Integrity Number (RIN): N/A (B.02.07)

Fragment table for sample 2 : O2 to N2 01 as received

Name	Start Size [nt]	End Size [nt]	Area	% of total Area
16S	2,628	3,147	10.2	6.0
23S	4,833	5,719	44.5	26.2



Overall Results for sample 3 : O2 to N2 02 as received

RNA Area: 235.1
 RNA Concentration: 136 ng/μl
 rRNA Ratio [23s / 16s]: 2.8
 RNA Integrity Number (RIN): 6.5 (B.02.07)

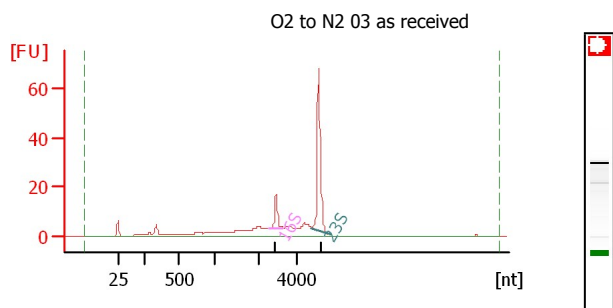
Fragment table for sample 3 : O2 to N2 02 as received

Name	Start Size [nt]	End Size [nt]	Area	% of total Area
16S	2,542	3,104	12.7	5.4
23S	4,790	5,590	35.6	15.2

Assay Class: Prokaryote Total RNA Nano
 Data Path: D:\...rokaryote Total RNA Nano_DE24802235_2011-03-17_18-23-00.xad

Created: 3/17/2011 6:23:00 PM
 Modified: 3/17/2011 6:42:25 PM

Electropherogram Summary Continued ...

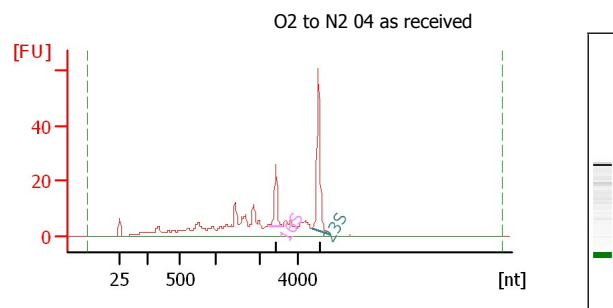


Overall Results for sample 4 : O2 to N2 03 as received

RNA Area: 201.2
 RNA Concentration: 116 ng/μl
 rRNA Ratio [23s / 16s]: 5.2
 RNA Integrity Number (RIN): N/A (B.02.07)

Fragment table for sample 4 : O2 to N2 03 as received

Name	Start Size [nt]	End Size [nt]	Area	% of total Area
16S	2,531	3,270	11.7	5.8
23S	4,724	5,701	60.8	30.2

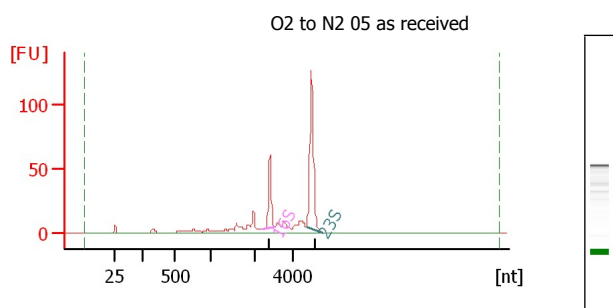


Overall Results for sample 5 : O2 to N2 04 as received

RNA Area: 284.5
 RNA Concentration: 165 ng/μl
 rRNA Ratio [23s / 16s]: 2.7
 RNA Integrity Number (RIN): 7.3 (B.02.07)

Fragment table for sample 5 : O2 to N2 04 as received

Name	Start Size [nt]	End Size [nt]	Area	% of total Area
16S	2,516	3,172	20.6	7.3
23S	4,679	5,597	54.7	19.2

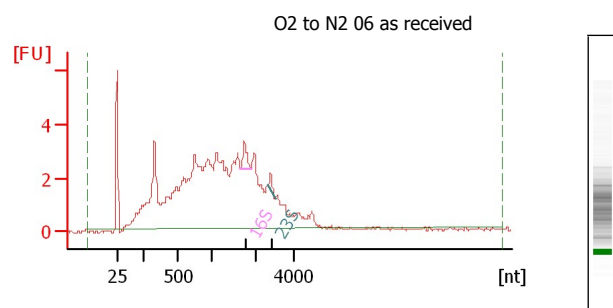


Overall Results for sample 6 : O2 to N2 05 as received

RNA Area: 370.2
 RNA Concentration: 214 ng/μl
 rRNA Ratio [23s / 16s]: 2.6
 RNA Integrity Number (RIN): 8.3 (B.02.07)

Fragment table for sample 6 : O2 to N2 05 as received

Name	Start Size [nt]	End Size [nt]	Area	% of total Area
16S	2,452	3,091	48.3	13.1
23S	4,722	5,559	127.9	34.6



Overall Results for sample 7 : O2 to N2 06 as received

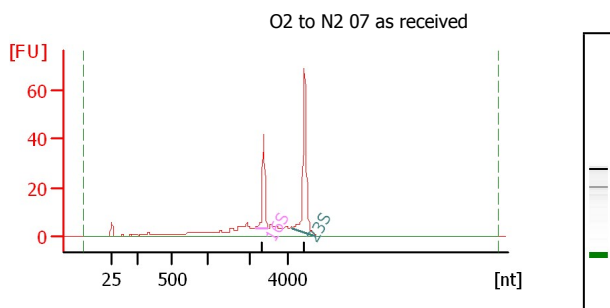
RNA Area: 101.6
 RNA Concentration: 59 ng/μl
 rRNA Ratio [23s / 16s]: 0.4
 RNA Integrity Number (RIN): 2.9 (B.02.07)

Fragment table for sample 7 : O2 to N2 06 as received

Name	Start Size [nt]	End Size [nt]	Area	% of total Area
16S	1,638	1,892	1.4	1.4
23S	2,662	3,016	0.6	0.6

Assay Class: Prokaryote Total RNA Nano
Data Path: D:\...rokaryote Total RNA Nano_DE24802235_2011-03-17_18-23-00.xad

Created: 3/17/2011 6:23:00 PM
Modified: 3/17/2011 6:42:25 PM

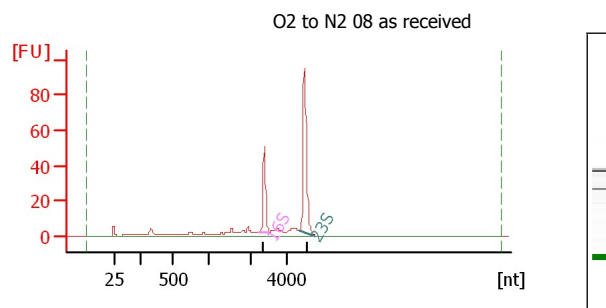
Electropherogram Summary Continued ...**Overall Results for sample 8 : O2 to N2 07 as received**

RNA Area: 225.8
RNA Concentration: 131 ng/μl
rRNA Ratio [23s / 16s]: 1.9
RNA Integrity Number (RIN): 8.3 (B.02.07)

Fragment table for sample 8 : O2 to N2 07 as received

Name	Start Size [nt]	End Size [nt]	Area	% of total Area
------	-----------------	---------------	------	-----------------

16S	2,291	3,004	35.8	15.9
23S	4,296	5,499	69.5	30.8

**Overall Results for sample 9 : O2 to N2 08 as received**

RNA Area: 275.5
RNA Concentration: 159 ng/μl
rRNA Ratio [23s / 16s]: 2.1
RNA Integrity Number (RIN): 8.6 (B.02.07)

Fragment table for sample 9 : O2 to N2 08 as received

Name	Start Size [nt]	End Size [nt]	Area	% of total Area
------	-----------------	---------------	------	-----------------

16S	2,409	3,037	43.5	15.8
23S	4,584	5,481	92.8	33.7

Assay Class: Prokaryote Total RNA Nano
Data Path: D:\...rokaryote Total RNA Nano_DE24802235_2011-03-17_18-23-00.xad

Created: 3/17/2011 6:23:00 PM
Modified: 3/17/2011 6:42:25 PM

Gel Image