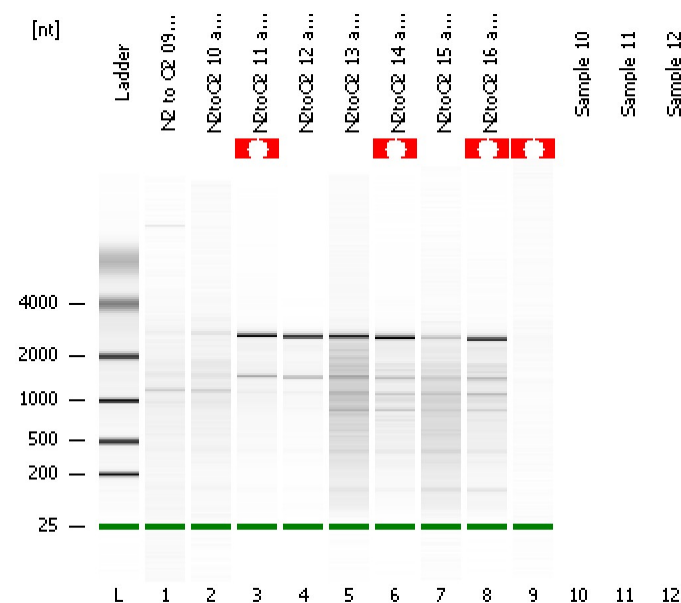


Assay Class: Prokaryote Total RNA Nano  
Data Path: D:\...rokaryote Total RNA Nano\_DE24802235\_2011-03-17\_17-37-04.xad

Created: 3/17/2011 5:37:04 PM  
Modified: 3/17/2011 7:13:43 PM

### Electrophoresis File Run Summary



#### Instrument Information:

Instrument Name: Ann's baby

Firmware: C.01.069

Serial#: DE24802235

Type: G2938B

#### Assay Information:

Assay Origin Path: D:\Program Files\Agilent\2100 bioanalyzer\2100 expert\assays\RNA\Prokaryote Total RNA Nano Series II.xsy

Assay Class: Prokaryote Total RNA Nano

Version: 2.5

Assay Comments: Total RNA Analysis ng sensitivity (Prokaryote)

© Copyright 2003 - 2009 Agilent Technologies, Inc.

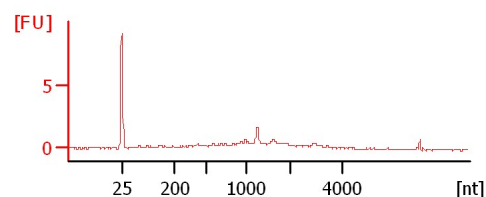
#### Chip Information:

Chip Lot #:

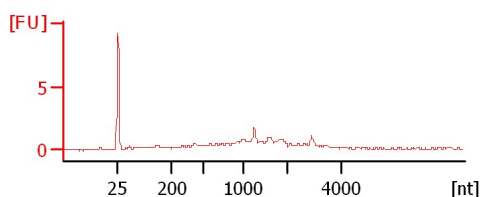
Reagent Kit Lot #:

Chip Comments:

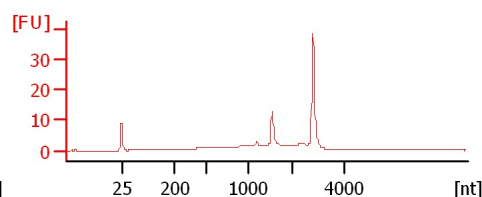
N2 to O2 09 as received



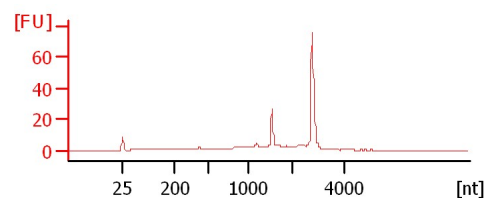
N2toO2 10 as received



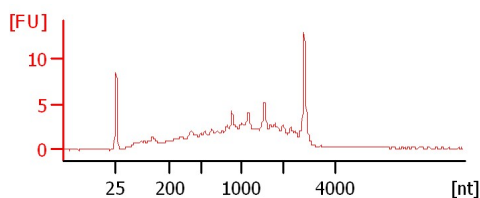
N2toO2 11 as received



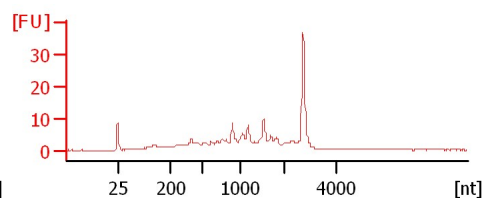
N2toO2 12 as received



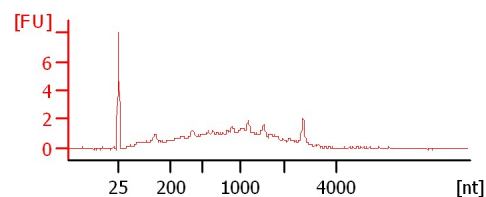
N2toO2 13 as received



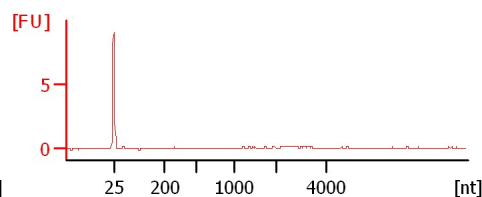
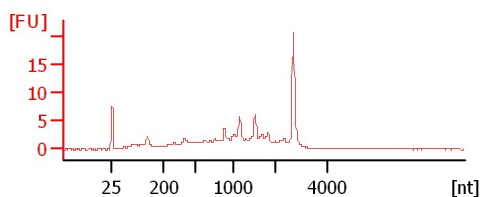
N2toO2 14 as received



N2toO2 15 as received



N2toO2 16 as received



Assay Class: Prokaryote Total RNA Nano  
Data Path: D:\...rokaryote Total RNA Nano\_DE24802235\_2011-03-17\_17-37-04.xad

Created: 3/17/2011 5:37:04 PM  
Modified: 3/17/2011 7:13:43 PM

**Electrophoresis File Run Summary (Chip Summary)**

Sample Name	Sample Comment	Status	Result Label	Result Color
N2 to O2 09 as received		✓		
N2toO2 10 as received		✓		
N2toO2 11 as received		✓		
N2toO2 12 as received		✓		
N2toO2 13 as received		✓		
N2toO2 14 as received		✓		
N2toO2 15 as received		✓		
N2toO2 16 as received		✓		
Sample 10		✓		
Sample 11				
Sample 12				

**Chip Lot #****Reagent Kit Lot #****Chip Comments :**

Assay Class: Prokaryote Total RNA Nano  
Data Path: D:\...rokaryote Total RNA Nano\_DE24802235\_2011-03-17\_17-37-04.xad

Created: 3/17/2011 5:37:04 PM  
Modified: 3/17/2011 7:13:43 PM

## Electrophoresis Assay Details

### General Analysis Settings

Number of Available Sample and Ladder Wells (Max.) : 13  
Minimum Visible Range [s] : 17  
Maximum Visible Range [s] : 70  
Start Analysis Time Range [s] : 19  
End Analysis Time Range [s] : 69  
Ladder Concentration [ng/μl] : 150  
Lower Marker Concentration [ng/μl] : 0  
Upper Marker Concentration [ng/μl] : 0  
Used Lower Marker for Quantitation  
Standard Curve Fit is Logarithmic  
Show Data Aligned to Lower Marker

### Integrator Settings

Integration Start Time [s] : 19  
Integration End Time [s] : 69  
Slope Threshold : 0.6  
Height Threshold [FU] : 0.5  
Area Threshold : 0.2  
Width Threshold [s] : 0.5  
Baseline Plateau [s] : 6

### Filter Settings

Filter Width [s] : 0.5  
Polynomial Order : 4

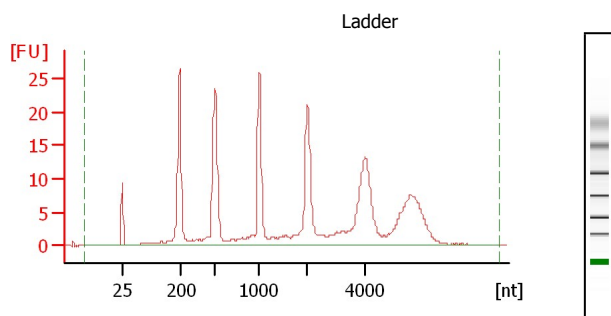
### Ladder

Ladder Peak	Size
1	25
2	200
3	500
4	1000
5	2000
6	4000

Assay Class: Prokaryote Total RNA Nano  
 Data Path: D:\...rokaryote Total RNA Nano\_DE24802235\_2011-03-17\_17-37-04.xad

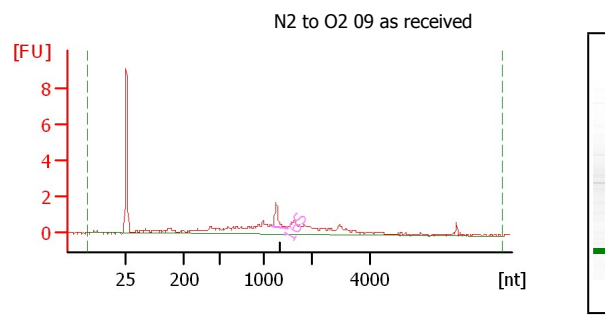
Created: 3/17/2011 5:37:04 PM  
 Modified: 3/17/2011 7:13:43 PM

### Electropherogram Summary



#### Overall Results for Ladder

RNA Area: 291.0  
 RNA Concentration: 150 ng/μl

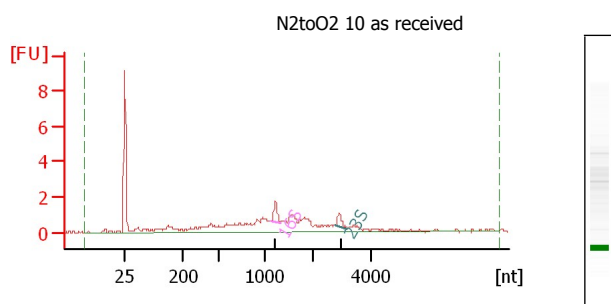


#### Overall Results for sample 1 : N2 to O2 09 as received

RNA Area: 24.1  
 RNA Concentration: 12 ng/μl  
 rRNA Ratio [23s / 16s]: 0.0  
 RNA Integrity Number (RIN): 5.2 (B.02.07)

#### Fragment table for sample 1 : N2 to O2 09 as received

Name	Start Size [nt]	End Size [nt]	Area	% of total Area
16S	1,165	1,470	1.4	5.9

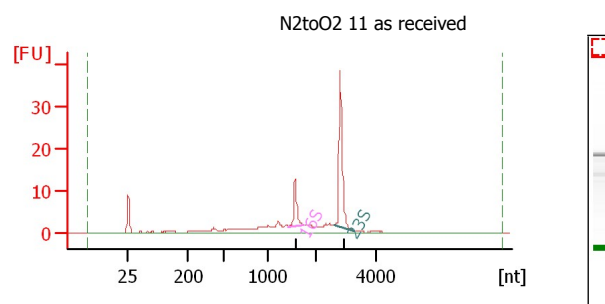


#### Overall Results for sample 2 : N2toO2 10 as received

RNA Area: 26.8  
 RNA Concentration: 14 ng/μl  
 rRNA Ratio [23s / 16s]: 0.7  
 RNA Integrity Number (RIN): 5.1 (B.02.07)

#### Fragment table for sample 2 : N2toO2 10 as received

Name	Start Size [nt]	End Size [nt]	Area	% of total Area
16S	1,123	1,321	1.2	4.5
23S	2,770	3,188	0.8	3.0



#### Overall Results for sample 3 : N2toO2 11 as received

RNA Area: 111.8  
 RNA Concentration: 58 ng/μl  
 rRNA Ratio [23s / 16s]: 3.1  
 RNA Integrity Number (RIN): N/A (B.02.07)

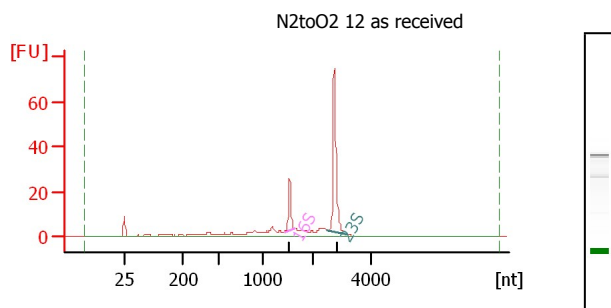
#### Fragment table for sample 3 : N2toO2 11 as received

Name	Start Size [nt]	End Size [nt]	Area	% of total Area
16S	1,418	1,755	10.7	9.6
23S	2,598	3,301	32.9	29.4

Assay Class: Prokaryote Total RNA Nano  
 Data Path: D:\...rokaryote Total RNA Nano\_DE24802235\_2011-03-17\_17-37-04.xad

Created: 3/17/2011 5:37:04 PM  
 Modified: 3/17/2011 7:13:43 PM

### Electropherogram Summary Continued ...

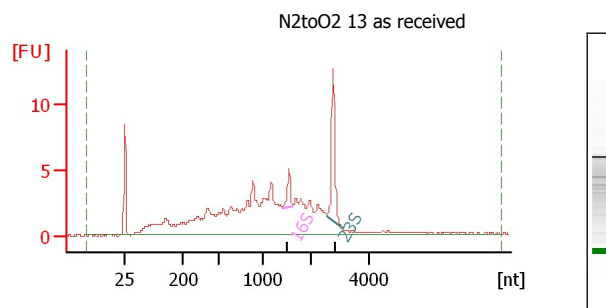


#### Overall Results for sample 4 : N2toO2 12 as received

RNA Area: 180.8  
 RNA Concentration: 93 ng/μl  
 rRNA Ratio [23s / 16s]: 3.6  
 RNA Integrity Number (RIN): 8.1 (B.02.07)

#### Fragment table for sample 4 : N2toO2 12 as received

Name	Start Size [nt]	End Size [nt]	Area	% of total Area
16S	1,423	1,631	18.5	10.2
23S	2,526	3,203	67.2	37.2

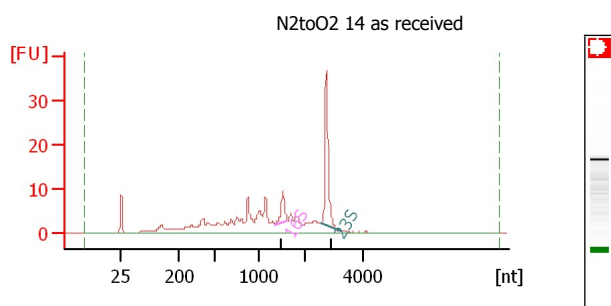


#### Overall Results for sample 5 : N2toO2 13 as received

RNA Area: 122.0  
 RNA Concentration: 63 ng/μl  
 rRNA Ratio [23s / 16s]: 3.8  
 RNA Integrity Number (RIN): 4.6 (B.02.07)

#### Fragment table for sample 5 : N2toO2 13 as received

Name	Start Size [nt]	End Size [nt]	Area	% of total Area
16S	1,416	1,625	2.8	2.3
23S	2,554	3,078	10.6	8.7

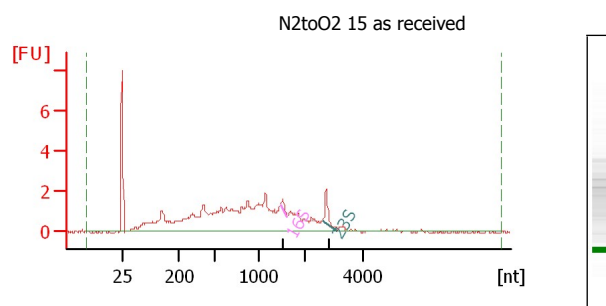


#### Overall Results for sample 6 : N2toO2 14 as received

RNA Area: 179.6  
 RNA Concentration: 93 ng/μl  
 rRNA Ratio [23s / 16s]: 4.2  
 RNA Integrity Number (RIN): N/A (B.02.07)

#### Fragment table for sample 6 : N2toO2 14 as received

Name	Start Size [nt]	End Size [nt]	Area	% of total Area
16S	1,373	1,619	7.8	4.4
23S	2,540	3,199	32.6	18.2



#### Overall Results for sample 7 : N2toO2 15 as received

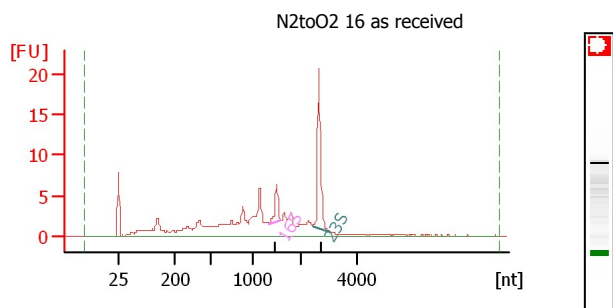
RNA Area: 54.5  
 RNA Concentration: 28 ng/μl  
 rRNA Ratio [23s / 16s]: 3.2  
 RNA Integrity Number (RIN): 3.1 (B.02.07)

#### Fragment table for sample 7 : N2toO2 15 as received

Name	Start Size [nt]	End Size [nt]	Area	% of total Area
16S	1,482	1,615	0.5	0.8
23S	2,598	3,144	1.5	2.7

Assay Class: Prokaryote Total RNA Nano  
Data Path: D:\...rokaryote Total RNA Nano\_DE24802235\_2011-03-17\_17-37-04.xad

Created: 3/17/2011 5:37:04 PM  
Modified: 3/17/2011 7:13:43 PM

**Electropherogram Summary Continued ...****Overall Results for sample 8 : N2toO2 16 as received**

RNA Area: 113.1  
RNA Concentration: 58 ng/μl  
rRNA Ratio [23s / 16s]: 3.8  
RNA Integrity Number (RIN): N/A (B.02.07)

**Fragment table for sample 8 : N2toO2 16 as received**

Name	Start Size [nt]	End Size [nt]	Area	% of total Area
------	-----------------	---------------	------	-----------------

16S	1,349	1,582	4.5	4.0
23S	2,435	3,104	17.3	15.3

Assay Class: Prokaryote Total RNA Nano  
Data Path: D:\...rokaryote Total RNA Nano\_DE24802235\_2011-03-17\_17-37-04.xad

Created: 3/17/2011 5:37:04 PM  
Modified: 3/17/2011 7:13:43 PM

**Gel Image**