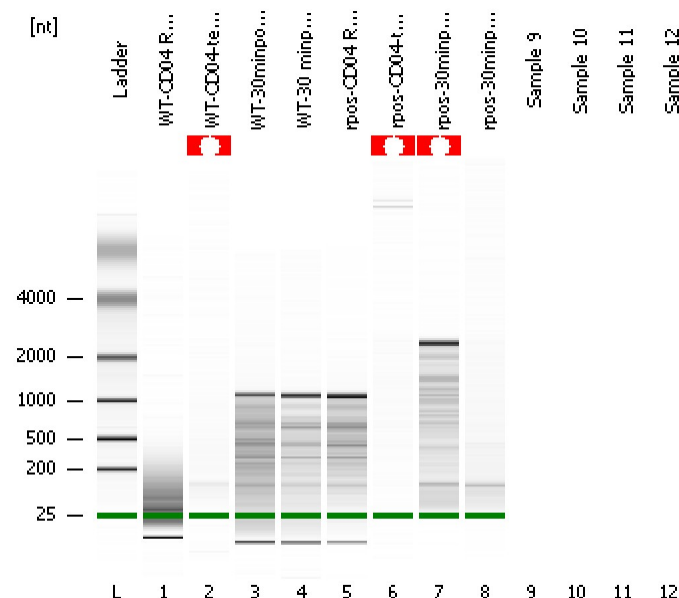


Assay Class: Prokaryote Total RNA Nano
Data Path: D:\...rokaryote Total RNA Nano_DE24802235_2011-04-15_17-21-39.xad

Created: 4/15/2011 5:21:40 PM
Modified: 4/15/2011 5:40:15 PM

Electrophoresis File Run Summary



Instrument Information:

Instrument Name: Ann's baby
Serial#: DE24802235
Firmware: C.01.069
Type: G2938B

Assay Information:

Assay Origin Path: D:\Program Files\Agilent\2100 bioanalyzer\2100 expert\assays\RNA\Prokaryote Total RNA Nano Series II.xsy

Assay Class: Prokaryote Total RNA Nano

Version: 2.5

Assay Comments: Total RNA Analysis ng sensitivity (Prokaryote)

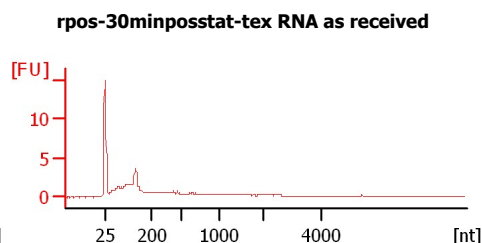
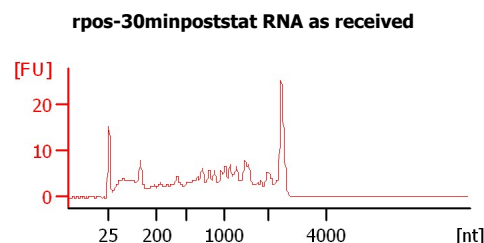
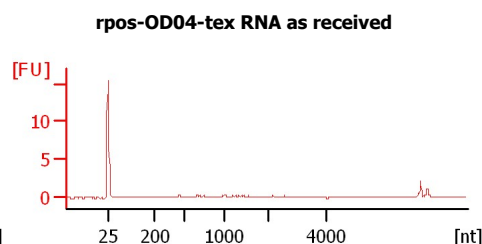
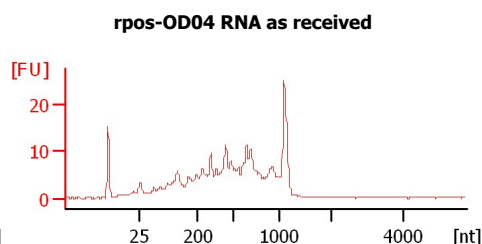
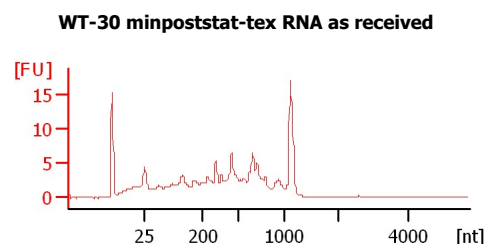
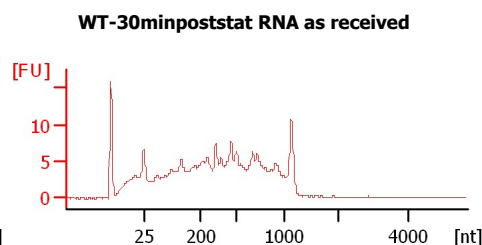
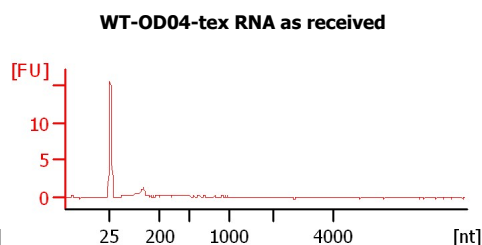
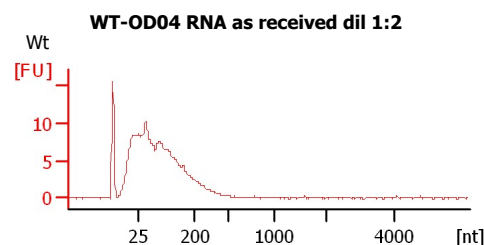
© Copyright 2003 - 2009 Agilent Technologies, Inc.

Chip Information:

Chip Lot #:

Reagent Kit Lot #:

Chip Comments:



Assay Class: Prokaryote Total RNA Nano
Data Path: D:\...rokaryote Total RNA Nano_DE24802235_2011-04-15_17-21-39.xad

Created: 4/15/2011 5:21:40 PM
Modified: 4/15/2011 5:40:15 PM

Electrophoresis File Run Summary (Chip Summary)

Sample Name	Sample Comment	Status	Result Label	Result Color
WT-OD04 RNA as received dil 1:2	Wt	✓		
WT-OD04-tex RNA as received		✓		
WT-30minpoststat RNA as received		✓		
WT-30 minpoststat-tex RNA as received		✓		
rpos-OD04 RNA as received		✓		
rpos-OD04-tex RNA as received		✓		
rpos-30minpoststat RNA as received		✓		
rpos-30minposstat-tex RNA as received		✓		
Sample 9				
Sample 10				
Sample 11				
Sample 12				

Chip Lot #**Reagent Kit Lot #****Chip Comments :**

Assay Class: Prokaryote Total RNA Nano
Data Path: D:\...rokaryote Total RNA Nano_DE24802235_2011-04-15_17-21-39.xad

Created: 4/15/2011 5:21:40 PM
Modified: 4/15/2011 5:40:15 PM

Electrophoresis Assay Details

General Analysis Settings

Number of Available Sample and Ladder Wells (Max.) : 13
Minimum Visible Range [s] : 17
Maximum Visible Range [s] : 70
Start Analysis Time Range [s] : 19
End Analysis Time Range [s] : 69
Ladder Concentration [ng/μl] : 150
Lower Marker Concentration [ng/μl] : 0
Upper Marker Concentration [ng/μl] : 0
Used Lower Marker for Quantitation
Standard Curve Fit is Logarithmic
Show Data Aligned to Lower Marker

Integrator Settings

Integration Start Time [s] : 19
Integration End Time [s] : 69
Slope Threshold : 0.6
Height Threshold [FU] : 0.5
Area Threshold : 0.2
Width Threshold [s] : 0.5
Baseline Plateau [s] : 6

Filter Settings

Filter Width [s] : 0.5
Polynomial Order : 4

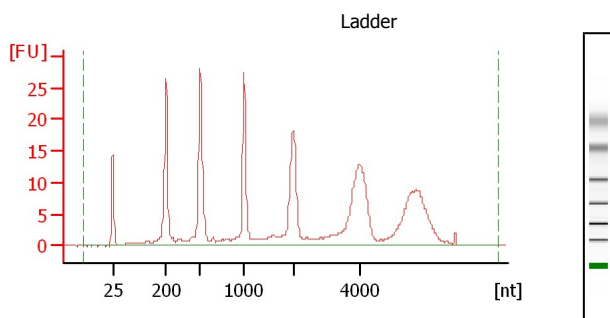
Ladder

Ladder Peak	Size
1	25
2	200
3	500
4	1000
5	2000
6	4000

Assay Class: Prokaryote Total RNA Nano
Data Path: D:\...rokaryote Total RNA Nano_DE24802235_2011-04-15_17-21-39.xad

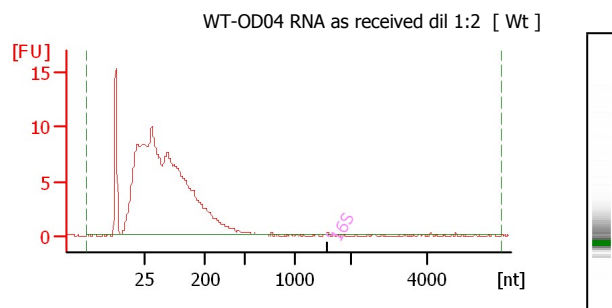
Created: 4/15/2011 5:21:40 PM
Modified: 4/15/2011 5:40:15 PM

Electropherogram Summary



Overall Results for Ladder

RNA Area: 321.9
RNA Concentration: 150 ng/μl

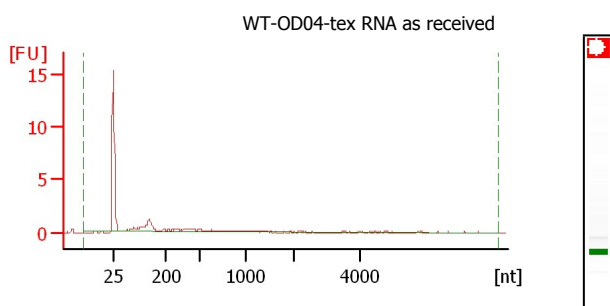


Overall Results for sample 1

RNA Area: 182.0
RNA Concentration: 85 ng/μl
rRNA Ratio [23s / 16s]: 0.0
RNA Integrity Number (RIN): 2.6 (B.02.07)

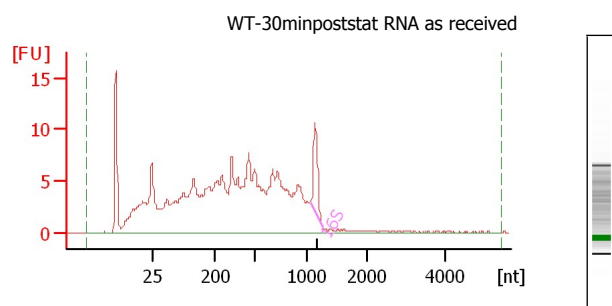
Fragment table for sample 1

Name	Start Size [nt]	End Size [nt]	Area	% of total Area
16S	1,572	1,624	0.1	0.1



Overall Results for sample 2 : WT-OD04-tex RNA as received

RNA Area: 14.7
RNA Concentration: 7 ng/μl
rRNA Ratio [23s / 16s]: 0.0
RNA Integrity Number (RIN): N/A (B.02.07)



Overall Results for sample 3 : WT-30minpoststat RNA as received

RNA Area: 250.2
RNA Concentration: 117 ng/μl
rRNA Ratio [23s / 16s]: 0.0
RNA Integrity Number (RIN): 4.1 (B.02.07)

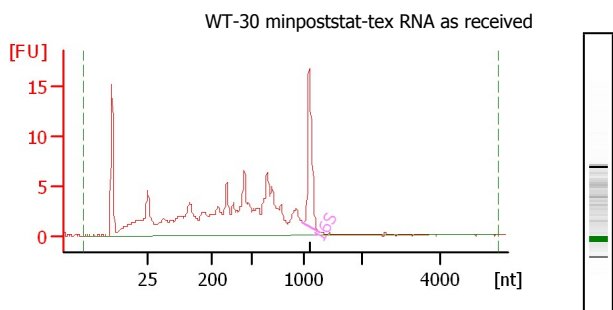
Fragment table for sample 3 : WT-30minpoststat RNA as received

Name	Start Size [nt]	End Size [nt]	Area	% of total Area
16S	1,039	1,253	10.6	4.2

Assay Class: Prokaryote Total RNA Nano
 Data Path: D:\...rokaryote Total RNA Nano_DE24802235_2011-04-15_17-21-39.xad

Created: 4/15/2011 5:21:40 PM
 Modified: 4/15/2011 5:40:15 PM

Electropherogram Summary Continued ...



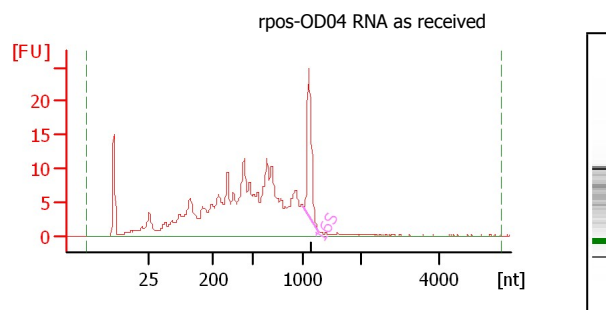
Overall Results for sample 4 : WT-30 minpoststat-tex RNA as re

RNA Area: 164.3
 RNA Concentration: 77 ng/μl
 rRNA Ratio [23s / 16s]: 0.0
 RNA Integrity Number (RIN): 5.4 (B.02.07)

Fragment table for sample 4 : WT-30 minpoststat-tex RNA as rec

Name	Start Size [nt]	End Size [nt]	Area	% of total Area
------	-----------------	---------------	------	-----------------

16S	991	1,271	19.0	11.5
-----	-----	-------	------	------



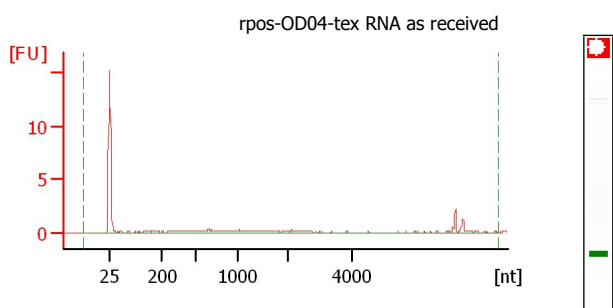
Overall Results for sample 5 : rpos-OD04 RNA as received

RNA Area: 296.1
 RNA Concentration: 138 ng/μl
 rRNA Ratio [23s / 16s]: 0.0
 RNA Integrity Number (RIN): 4.9 (B.02.07)

Fragment table for sample 5 : rpos-OD04 RNA as received

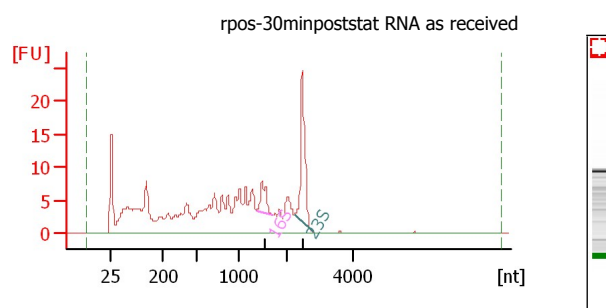
Name	Start Size [nt]	End Size [nt]	Area	% of total Area
------	-----------------	---------------	------	-----------------

16S	1,004	1,249	28.2	9.5
-----	-------	-------	------	-----



Overall Results for sample 6 : rpos-OD04-tex RNA as received

RNA Area: 17.6
 RNA Concentration: 8 ng/μl
 rRNA Ratio [23s / 16s]: 0.0
 RNA Integrity Number (RIN): N/A (B.02.07)



Overall Results for sample 7 : rpos-30minpoststat RNA as receiv

RNA Area: 281.4
 RNA Concentration: 131 ng/μl
 rRNA Ratio [23s / 16s]: 3.3
 RNA Integrity Number (RIN): N/A (B.02.07)

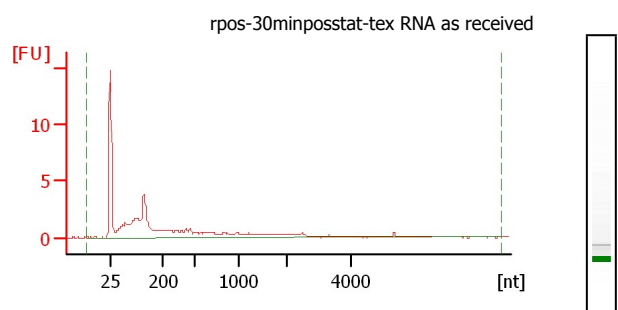
Fragment table for sample 7 : rpos-30minpoststat RNA as receiv

Name	Start Size [nt]	End Size [nt]	Area	% of total Area
------	-----------------	---------------	------	-----------------

16S	1,342	1,698	9.0	3.2
23S	2,211	2,756	29.5	10.5

Assay Class: Prokaryote Total RNA Nano
Data Path: D:\...rokaryote Total RNA Nano_DE24802235_2011-04-15_17-21-39.xad

Created: 4/15/2011 5:21:40 PM
Modified: 4/15/2011 5:40:15 PM

Electropherogram Summary Continued ...**Overall Results for sample 8 : rpos-30minposstat-tex RNA as re**

RNA Area: 46.4
RNA Concentration: 22 ng/μl
rRNA Ratio [23s / 16s]: 0.0
RNA Integrity Number (RIN): 2.2 (B.02.07)

Assay Class: Prokaryote Total RNA Nano
Data Path: D:\...rokaryote Total RNA Nano_DE24802235_2011-04-15_17-21-39.xad

Created: 4/15/2011 5:21:40 PM
Modified: 4/15/2011 5:40:15 PM

Gel Image