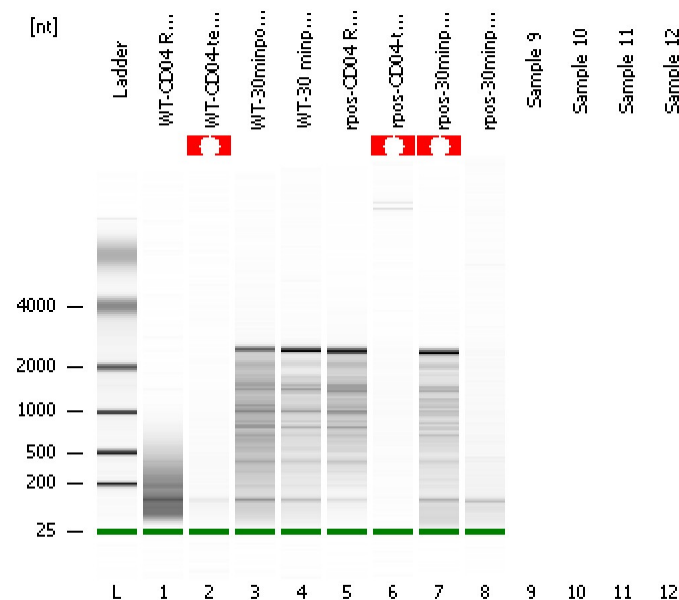


Assay Class: Prokaryote Total RNA Nano  
Data Path: D:\...rokaryote Total RNA Nano\_DE24802235\_2011-04-15\_17-21-39.xad

Created: 4/15/2011 5:21:40 PM  
Modified: 4/20/2011 12:30:49 PM

### Electrophoresis File Run Summary



#### Instrument Information:

Instrument Name: Ann's baby  
Serial#: DE24802235  
Firmware: C.01.069  
Type: G2938B

#### Assay Information:

Assay Origin Path: D:\Program Files\Agilent\2100 bioanalyzer\2100 expert\assays\RNA\Prokaryote Total RNA Nano Series II.xsy

Assay Class: Prokaryote Total RNA Nano

Version: 2.5

Assay Comments: Total RNA Analysis ng sensitivity (Prokaryote)

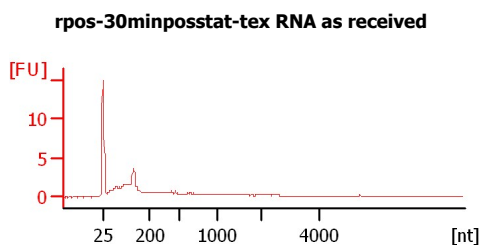
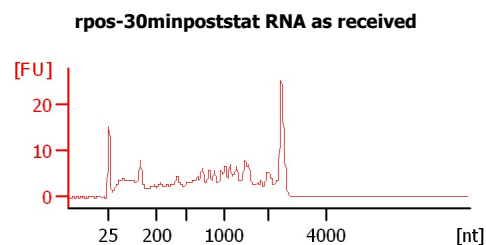
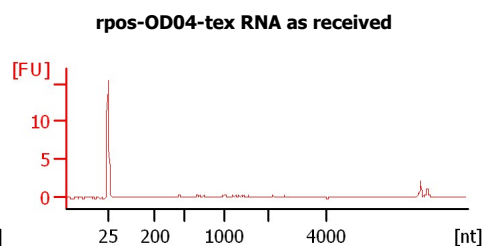
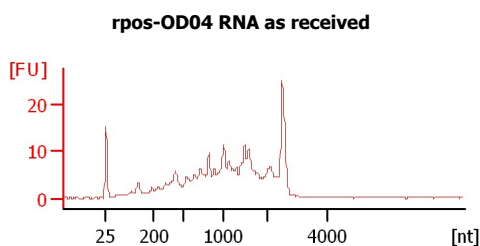
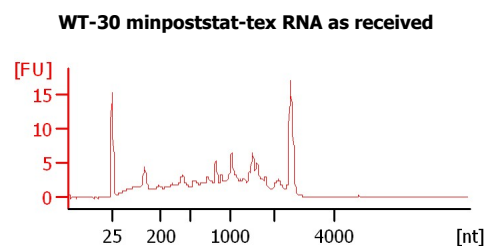
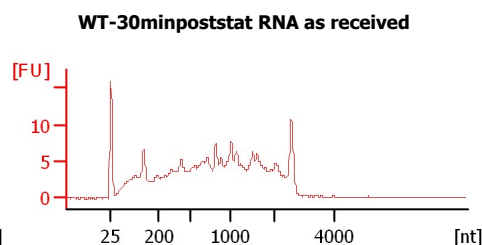
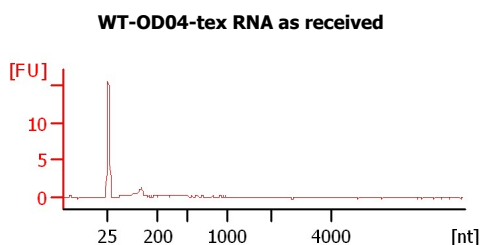
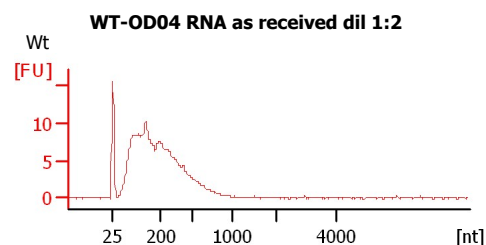
© Copyright 2003 - 2009 Agilent Technologies, Inc.

#### Chip Information:

Chip Lot #:

Reagent Kit Lot #:

Chip Comments:



Assay Class: Prokaryote Total RNA Nano  
Data Path: D:\...rokaryote Total RNA Nano\_DE24802235\_2011-04-15\_17-21-39.xad

Created: 4/15/2011 5:21:40 PM  
Modified: 4/20/2011 12:30:49 PM

**Electrophoresis File Run Summary (Chip Summary)**

Sample Name	Sample Comment	Status	Result Label	Result Color
WT-OD04 RNA as received dil 1:2	Wt	✓		
WT-OD04-tex RNA as received		✓		
WT-30minpoststat RNA as received		✓		
WT-30 minpoststat-tex RNA as received		✓		
rpos-OD04 RNA as received		✓		
rpos-OD04-tex RNA as received		✓		
rpos-30minpoststat RNA as received		✓		
rpos-30minposstat-tex RNA as received		✓		
Sample 9				
Sample 10				
Sample 11				
Sample 12				

**Chip Lot #****Reagent Kit Lot #****Chip Comments :**

Assay Class: Prokaryote Total RNA Nano  
Data Path: D:\...rokaryote Total RNA Nano\_DE24802235\_2011-04-15\_17-21-39.xad

Created: 4/15/2011 5:21:40 PM  
Modified: 4/20/2011 12:30:49 PM

## Electrophoresis Assay Details

### General Analysis Settings

Number of Available Sample and Ladder Wells (Max.) : 13

Minimum Visible Range [s] : 17

Maximum Visible Range [s] : 70

Start Analysis Time Range [s] : 19

End Analysis Time Range [s] : 69

Ladder Concentration [ng/μl] : 150

Lower Marker Concentration [ng/μl] : 0

Upper Marker Concentration [ng/μl] : 0

Used Lower Marker for Quantitation

Standard Curve Fit is Logarithmic

Show Data Aligned to Lower Marker

### Integrator Settings

Integration Start Time [s] : 19

Integration End Time [s] : 69

Slope Threshold : 0.6

Height Threshold [FU] : 0.5

Area Threshold : 0.2

Width Threshold [s] : 0.5

Baseline Plateau [s] : 6

### Filter Settings

Filter Width [s] : 0.5

Polynomial Order : 4

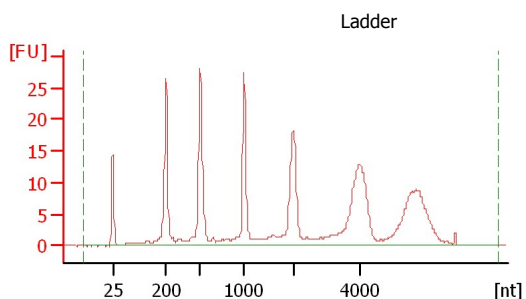
### Ladder

Ladder Peak	Size
1	25
2	200
3	500
4	1000
5	2000
6	4000

Assay Class: Prokaryote Total RNA Nano  
Data Path: D:\...rokaryote Total RNA Nano\_DE24802235\_2011-04-15\_17-21-39.xad

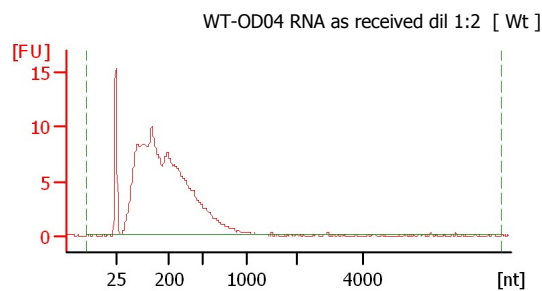
Created: 4/15/2011 5:21:40 PM  
Modified: 4/20/2011 12:30:49 PM

### Electropherogram Summary



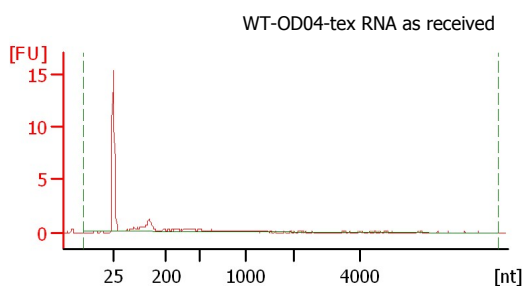
#### Overall Results for Ladder

RNA Area: 321.9  
RNA Concentration: 150 ng/μl



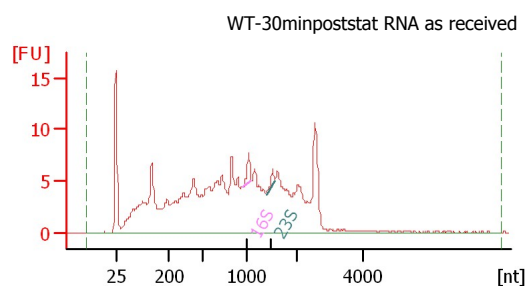
#### Overall Results for sample 1

RNA Area: 219.6  
RNA Concentration: 102 ng/μl  
rRNA Ratio [23s / 16s]: 0.0  
RNA Integrity Number (RIN): 2.6 (B.02.07)



#### Overall Results for sample 2 : WT-OD04-tex RNA as received

RNA Area: 14.7  
RNA Concentration: 7 ng/μl  
rRNA Ratio [23s / 16s]: 0.0  
RNA Integrity Number (RIN): N/A (B.02.07)



#### Overall Results for sample 3 : WT-30minpoststat RNA as received

RNA Area: 269.3  
RNA Concentration: 126 ng/μl  
rRNA Ratio [23s / 16s]: 0.4  
RNA Integrity Number (RIN): 4.1 (B.02.07)

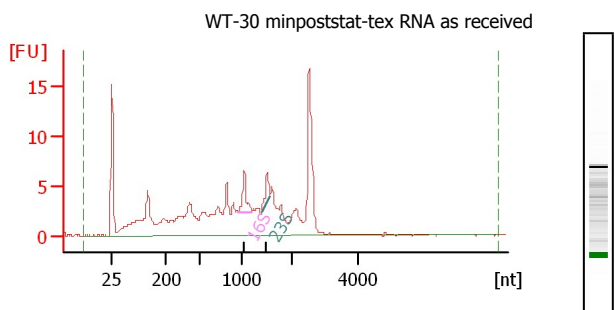
#### Fragment table for sample 3 : WT-30minpoststat RNA as received

Name	Start Size [nt]	End Size [nt]	Area	% of total Area
16S	957	1,093	3.0	1.1
23S	1,381	1,559	1.3	0.5

Assay Class: Prokaryote Total RNA Nano  
 Data Path: D:\...rokaryote Total RNA Nano\_DE24802235\_2011-04-15\_17-21-39.xad

Created: 4/15/2011 5:21:40 PM  
 Modified: 4/20/2011 12:30:49 PM

### Electropherogram Summary Continued ...



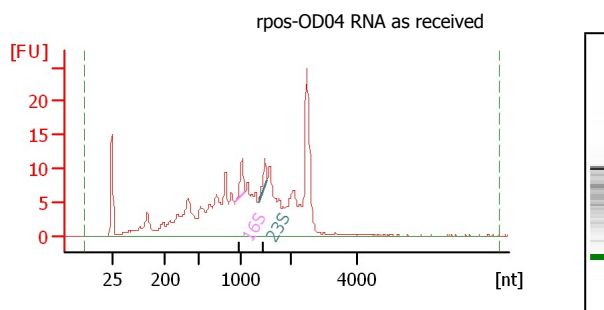
#### Overall Results for sample 4 : WT-30 minpoststat-tex RNA as re

RNA Area: 166.6  
 RNA Concentration: 78 ng/μl  
 rRNA Ratio [23s / 16s]: 0.5  
 RNA Integrity Number (RIN): 5.4 (B.02.07)

#### Fragment table for sample 4 : WT-30 minpoststat-tex RNA as rec

Name	Start Size [nt]	End Size [nt]	Area	% of total Area
------	-----------------	---------------	------	-----------------

16S	953	1,190	5.7	3.4
23S	1,377	1,556	3.1	1.9



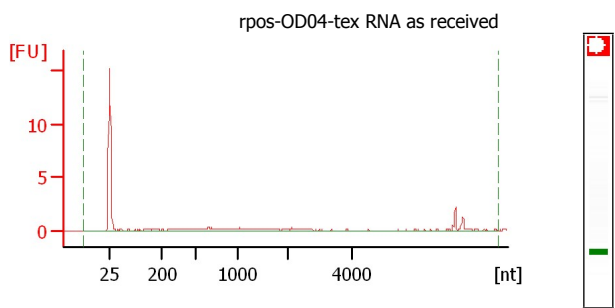
#### Overall Results for sample 5 : rpos-OD04 RNA as received

RNA Area: 290.0  
 RNA Concentration: 135 ng/μl  
 rRNA Ratio [23s / 16s]: 0.7  
 RNA Integrity Number (RIN): 4.9 (B.02.07)

#### Fragment table for sample 5 : rpos-OD04 RNA as received

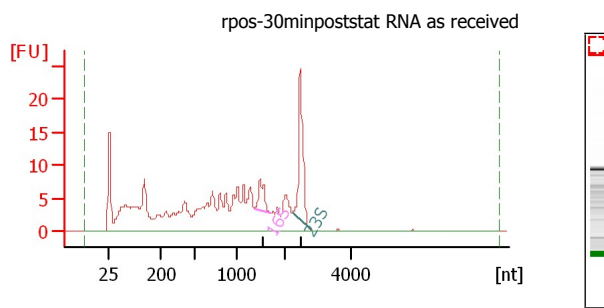
Name	Start Size [nt]	End Size [nt]	Area	% of total Area
------	-----------------	---------------	------	-----------------

16S	920	1,072	6.4	2.2
23S	1,346	1,526	4.3	1.5



#### Overall Results for sample 6 : rpos-OD04-tex RNA as received

RNA Area: 17.6  
 RNA Concentration: 8 ng/μl  
 rRNA Ratio [23s / 16s]: 0.0  
 RNA Integrity Number (RIN): N/A (B.02.07)



#### Overall Results for sample 7 : rpos-30minpoststat RNA as receiv

RNA Area: 281.4  
 RNA Concentration: 131 ng/μl  
 rRNA Ratio [23s / 16s]: 3.3  
 RNA Integrity Number (RIN): N/A (B.02.07)

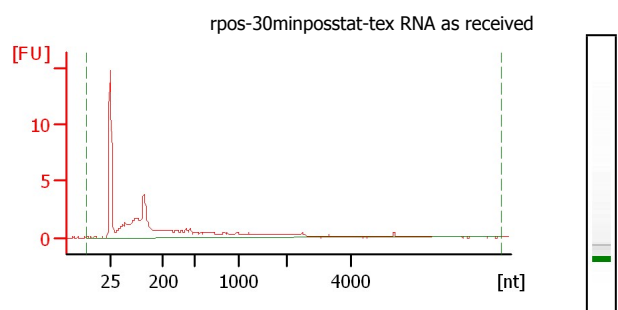
#### Fragment table for sample 7 : rpos-30minpoststat RNA as receiv

Name	Start Size [nt]	End Size [nt]	Area	% of total Area
------	-----------------	---------------	------	-----------------

16S	1,342	1,698	9.0	3.2
23S	2,211	2,756	29.5	10.5

Assay Class: Prokaryote Total RNA Nano  
Data Path: D:\...rokaryote Total RNA Nano\_DE24802235\_2011-04-15\_17-21-39.xad

Created: 4/15/2011 5:21:40 PM  
Modified: 4/20/2011 12:30:49 PM

**Electropherogram Summary Continued ...****Overall Results for sample 8 : rpos-30minposstat-tex RNA as re**

RNA Area: 46.4  
RNA Concentration: 22 ng/μl  
rRNA Ratio [23s / 16s]: 0.0  
RNA Integrity Number (RIN): 2.2 (B.02.07)

Assay Class: Prokaryote Total RNA Nano  
Data Path: D:\...rokaryote Total RNA Nano\_DE24802235\_2011-04-15\_17-21-39.xad

Created: 4/15/2011 5:21:40 PM  
Modified: 4/20/2011 12:30:49 PM

**Gel Image**