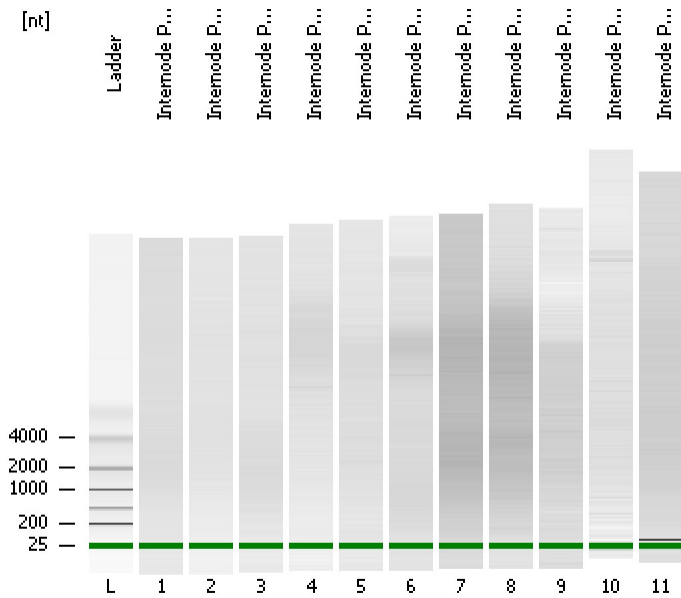


Assay Class: mRNA Pico
Data Path: D:\...16\2100 expert_mRNA Pico_DE24802235_2011-12-16_19-38-31.xad

Created: 12/16/2011 7:38:30 PM
Modified: 12/16/2011 10:49:52 PM

Electrophoresis File Run Summary



Instrument Information:

Instrument Name: Ann's baby Firmware: C.01.069
Serial#: DE24802235 Type: G2938B

Assay Information:

Assay Origin Path: D:\Program Files\Agilent\2100 bioanalyzer\2100 expert\assays\RNA\mRNA Pico Series II.xsy

Assay Class: mRNA Pico
Version: 2.6
Assay Comments: mRNA Analysis pg sensitivity

© Copyright 2003 - 2009 Agilent Technologies, Inc.

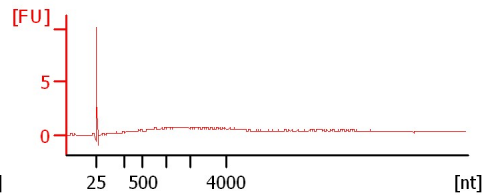
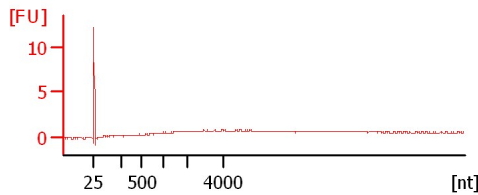
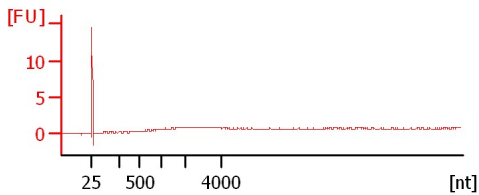
Chip Information:

Chip Lot #: Reagent Kit Lot #: Chip Comments: Samples were diluted with RNase free water 2x

Internode PolyA concentrated Sample 1...

Internode PolyA Sample 2; 2x dilution

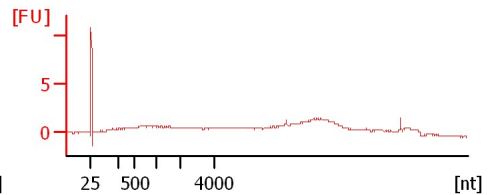
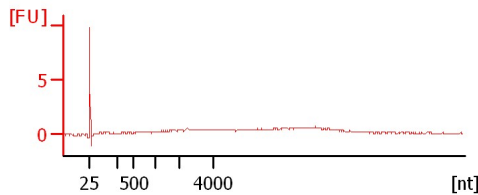
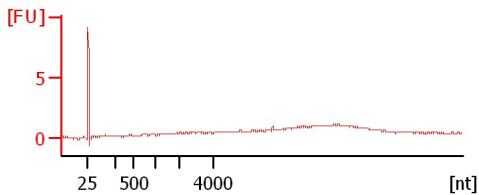
Internode PolyA Sample 3; 2x dilution



Internode PolyA Sample 4; 2x dilution

Internode PolyA Sample 5; 2x dilution

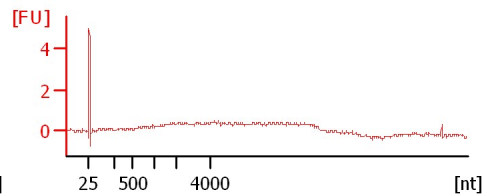
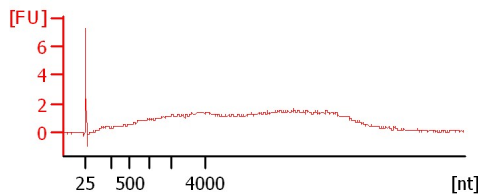
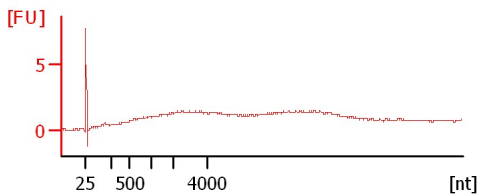
Internode PolyA Sample 6; 2x dilution



Internode PolyA Sample 7; 2x dilution

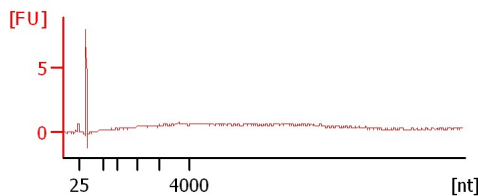
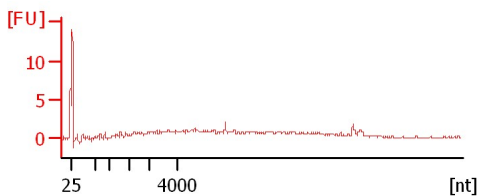
Internode PolyA Sample 8; 2x dilution

Internode PolyA Sample 9; 2x dilution



Internode PolyA Sample 10; 2x dilution

Internode PolyA Sample 11; 2x dilution



Assay Class: mRNA Pico
Data Path: D:\...16\2100 expert_mRNA Pico_DE24802235_2011-12-16_19-38-31.xad

Created: 12/16/2011 7:38:30 PM
Modified: 12/16/2011 10:49:52 PM

Electrophoresis File Run Summary (Chip Summary)

Sample Name	Sample Comment	Status	Result Label	Result Color
Internode PolyA concentrated Sample 1; 2x dilution		✓		
Internode PolyA Sample 2; 2x dilution		✓		
Internode PolyA Sample 3; 2x dilution		✓		
Internode PolyA Sample 4; 2x dilution		✓		
Internode PolyA Sample 5; 2x dilution		✓		
Internode PolyA Sample 6; 2x dilution		✓		
Internode PolyA Sample 7; 2x dilution		✓		
Internode PolyA Sample 8; 2x dilution		✓		
Internode PolyA Sample 9; 2x dilution		✓		
Internode PolyA Sample 10; 2x dilution		✓		
Internode PolyA Sample 11; 2x dilution		✓		
Ladder		✓		

Chip Lot #**Reagent Kit Lot #****Chip Comments :**

Samples were diluted with RNase free water 2x

Assay Class: mRNA Pico
Data Path: D:\...16\2100 expert_mRNA Pico_DE24802235_2011-12-16_19-38-31.xad

Created: 12/16/2011 7:38:30 PM
Modified: 12/16/2011 10:49:52 PM

Electrophoresis Assay Details

General Analysis Settings

Number of Available Sample and Ladder Wells (Max.) : 12
Minimum Visible Range [s] : 14
Maximum Visible Range [s] : 85
Start Analysis Time Range [s] : 15
End Analysis Time Range [s] : 84
Ladder Concentration [pg/ μ l] : 1000
Lower Marker Concentration [pg/ μ l] : 0
Upper Marker Concentration [pg/ μ l] : 0
Used Lower Marker for Quantitation
Standard Curve Fit is Logarithmic
Show Data Aligned to Lower Marker

Integrator Settings

Integration Start Time [s] : 15
Integration End Time [s] : 84
Slope Threshold : 0.2
Height Threshold [FU] : 0.5
Area Threshold : 0.1
Width Threshold [s] : 0.2
Baseline Plateau [s] : 0.5

Filter Settings

Filter Width [s] : 0.5
Polynomial Order : 4

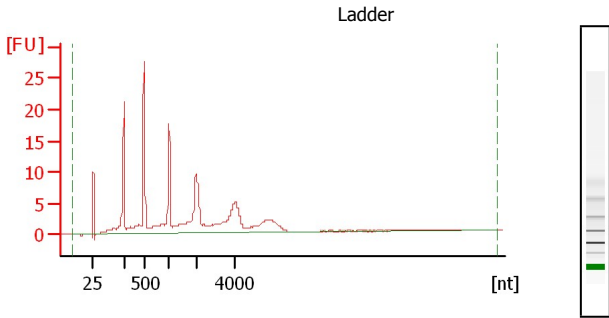
Ladder

Ladder Peak	Size
1	25
2	200
3	500
4	1000
5	2000
6	4000

Assay Class: mRNA Pico
 Data Path: D:\...16\2100 expert_mRNA Pico_DE24802235_2011-12-16_19-38-31.xad

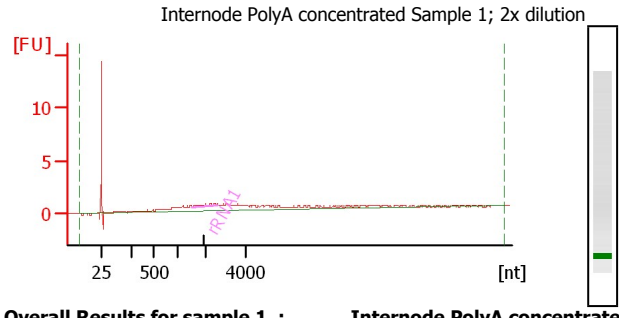
Created: 12/16/2011 7:38:30 PM
 Modified: 12/16/2011 10:49:52 PM

Electropherogram Summary



Overall Results for Ladder

RNA Area: 208.7
 RNA Concentration: 1,000 pg/μl

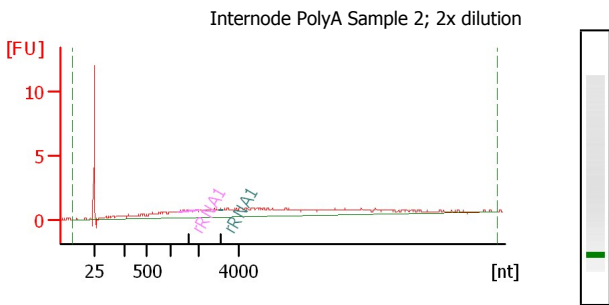


Overall Results for sample 1 : Internode PolyA concentrated Sa

RNA Area: 39.6
 RNA Concentration: 190 pg/μl
 rRNA Contamination: 3.0 %

Fragment table for sample 1 : Internode PolyA concentrated Sa

Name	Start Size [nt]	End Size [nt]	Area	% of total Area
rRNA1	1,523	2,653	1.2	3.0

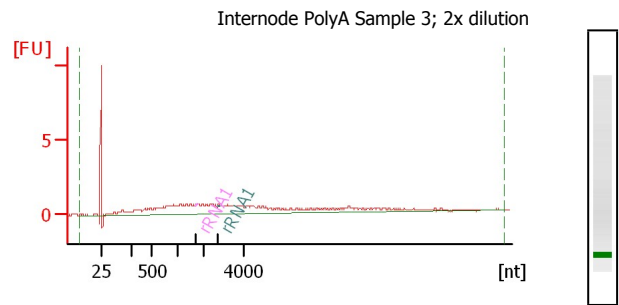


Overall Results for sample 2 : Internode PolyA Sample 2; 2x dilu

RNA Area: 42.7
 RNA Concentration: 205 pg/μl
 rRNA Contamination: 1.8 %

Fragment table for sample 2 : Internode PolyA Sample 2; 2x dilu

Name	Start Size [nt]	End Size [nt]	Area	% of total Area
rRNA1	1,293	1,984	0.7	1.6
rRNA1	3,046	3,203	0.1	0.2



Overall Results for sample 3 : Internode PolyA Sample 3; 2x dilu

RNA Area: 43.9
 RNA Concentration: 211 pg/μl
 rRNA Contamination: 0.5 %

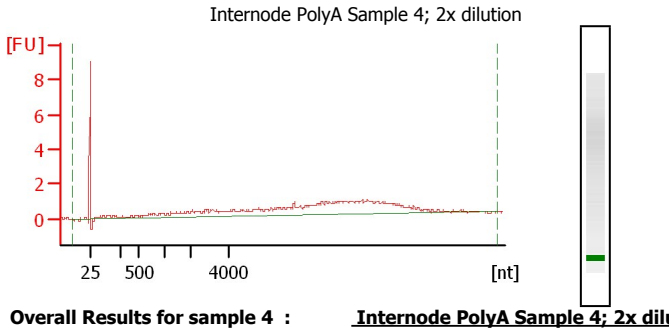
Fragment table for sample 3 : Internode PolyA Sample 3; 2x dilu

Name	Start Size [nt]	End Size [nt]	Area	% of total Area
rRNA1	1,656	1,783	0.1	0.2
rRNA1	2,652	2,826	0.1	0.3

Assay Class: mRNA Pico
 Data Path: D:\...16\2100 expert_mRNA Pico_DE24802235_2011-12-16_19-38-31.xad

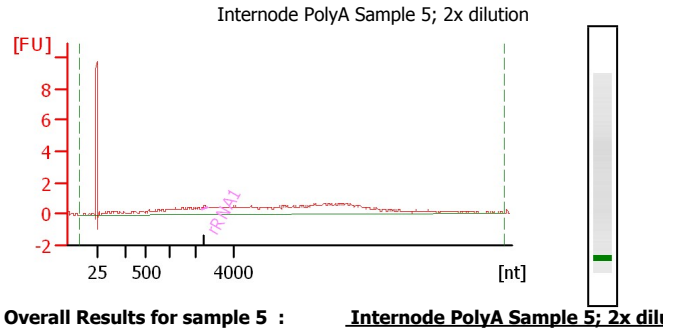
Created: 12/16/2011 7:38:30 PM
 Modified: 12/16/2011 10:49:52 PM

Electropherogram Summary Continued ...



Overall Results for sample 4 : Internode PolyA Sample 4; 2x dilu

RNA Area: 44.6
 RNA Concentration: 214 pg/μl
 rRNA Contamination: 0.0 %

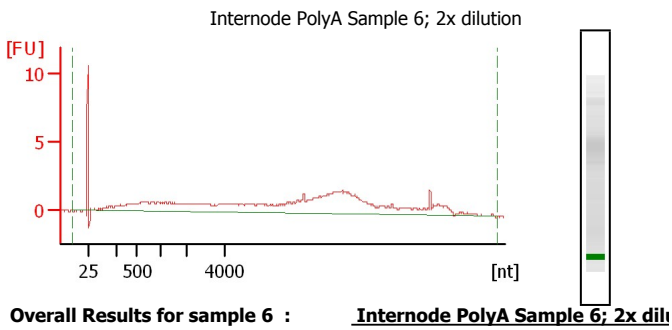


Overall Results for sample 5 : Internode PolyA Sample 5; 2x dilu

RNA Area: 46.9
 RNA Concentration: 225 pg/μl
 rRNA Contamination: 0.6 %

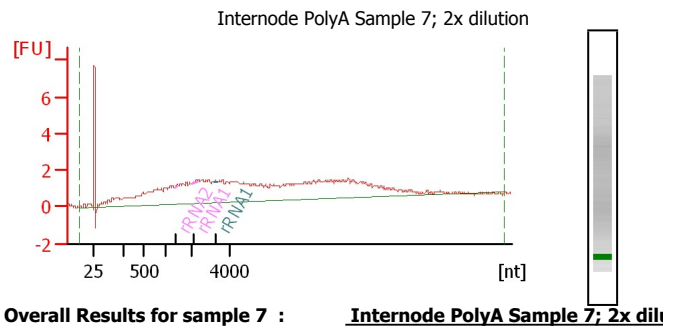
Fragment table for sample 5 : Internode PolyA Sample 5; 2x dilu

Name	Start Size [nt]	End Size [nt]	Area	% of total Area
rRNA1	2,280	2,592	0.3	0.6



Overall Results for sample 6 : Internode PolyA Sample 6; 2x dilu

RNA Area: 88.4
 RNA Concentration: 423 pg/μl
 rRNA Contamination: 0.0 %



Overall Results for sample 7 : Internode PolyA Sample 7; 2x dilu

RNA Area: 98.1
 RNA Concentration: 470 pg/μl
 rRNA Contamination: 0.4 %

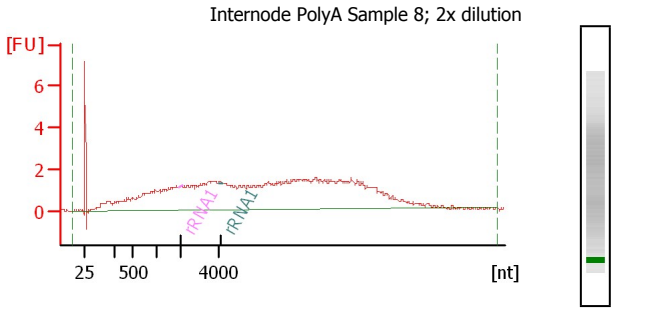
Fragment table for sample 7 : Internode PolyA Sample 7; 2x dilu

Name	Start Size [nt]	End Size [nt]	Area	% of total Area
rRNA2	1,364	1,462	0.1	0.1
rRNA1	1,976	2,318	0.2	0.2
rRNA1	3,186	3,319	0.1	0.1

Assay Class: mRNA Pico
 Data Path: D:\...16\2100 expert_mRNA Pico_DE24802235_2011-12-16_19-38-31.xad

Created: 12/16/2011 7:38:30 PM
 Modified: 12/16/2011 10:49:52 PM

Electropherogram Summary Continued ...

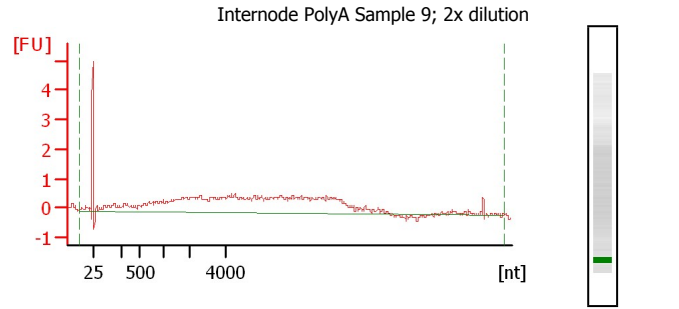


Overall Results for sample 8 : Internode PolyA Sample 8; 2x dilu

RNA Area: 118.2
 RNA Concentration: 566 pg/μl
 rRNA Contamination: 0.2 %

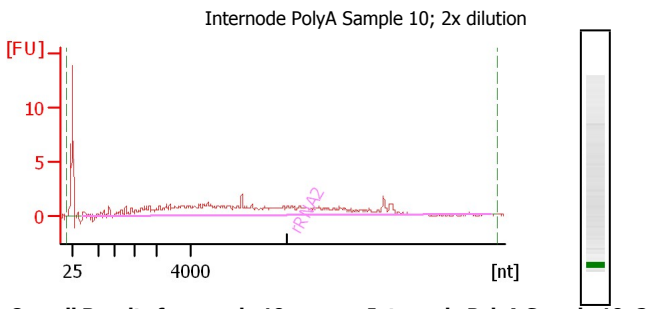
Fragment table for sample 8 : Internode PolyA Sample 8; 2x dilu

Name	Start Size [nt]	End Size [nt]	Area	% of total Area
rRNA1	1,912	2,101	0.1	0.1
rRNA1	4,007	4,245	0.1	0.1



Overall Results for sample 9 : Internode PolyA Sample 9; 2x dilu

RNA Area: 43.2
 RNA Concentration: 207 pg/μl
 rRNA Contamination: 0.0 %

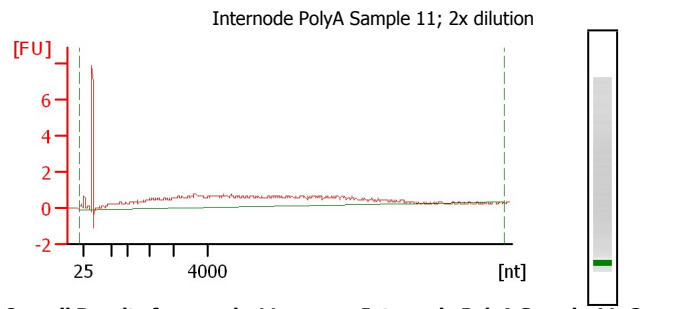


Overall Results for sample 10 : Internode PolyA Sample 10; 2x d

RNA Area: 69.4
 RNA Concentration: 332 pg/μl
 rRNA Contamination: 0.0 %

Fragment table for sample 10 : Internode PolyA Sample 10; 2x d

Name	Start Size [nt]	End Size [nt]	Area	% of total Area
rRNA2	95	22,445	88.9	128.2



Overall Results for sample 11 : Internode PolyA Sample 11; 2x d

RNA Area: 62.0
 RNA Concentration: 297 pg/μl
 rRNA Contamination: 0.0 %

Assay Class: mRNA Pico
Data Path: D:\...16\2100 expert_mRNA Pico_DE24802235_2011-12-16_19-38-31.xad

Created: 12/16/2011 7:38:30 PM
Modified: 12/16/2011 10:49:52 PM

Gel Image

