

Assay Class: Eukaryote Total RNA Nano
Data Path: D:\...Eukaryote Total RNA Nano_DE24802235_2011-05-02_18-23-38.xad

Created: 5/2/2011 6:23:38 PM
Modified: 5/2/2011 6:46:27 PM

Electrophoresis Assay Details

General Analysis Settings

Number of Available Sample and Ladder Wells (Max.) : 13

Minimum Visible Range [s] : 17

Maximum Visible Range [s] : 70

Start Analysis Time Range [s] : 19

End Analysis Time Range [s] : 69

Ladder Concentration [ng/μl] : 150

Lower Marker Concentration [ng/μl] : 0

Upper Marker Concentration [ng/μl] : 0

Used Lower Marker for Quantitation

Standard Curve Fit is Logarithmic

Show Data Aligned to Lower Marker

Integrator Settings

Integration Start Time [s] : 19

Integration End Time [s] : 69

Slope Threshold : 0.6

Height Threshold [FU] : 0.5

Area Threshold : 0.2

Width Threshold [s] : 0.5

Baseline Plateau [s] : 6

Filter Settings

Filter Width [s] : 0.5

Polynomial Order : 4

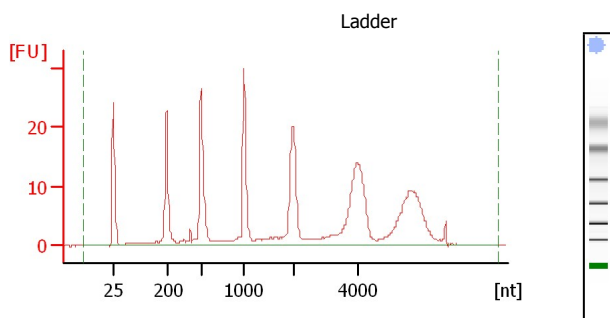
Ladder

Ladder Peak	Size
1	25
2	200
3	500
4	1000
5	2000
6	4000

Assay Class: Eukaryote Total RNA Nano
Data Path: D:\...Eukaryote Total RNA Nano_DE24802235_2011-05-02_18-23-38.xad

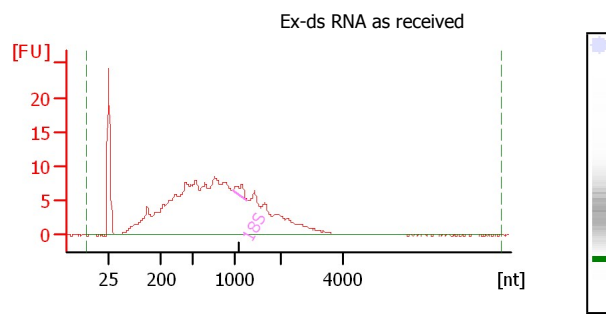
Created: 5/2/2011 6:23:38 PM
Modified: 5/2/2011 6:46:27 PM

Electropherogram Summary



Overall Results for Ladder

RNA Area: 315.2
RNA Concentration: 150 ng/μl
Result Flagging Color:
Result Flagging Label: All Other Samples

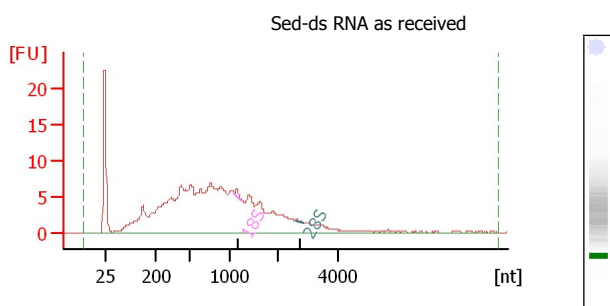


Overall Results for sample 9 : Ex-ds RNA as received

RNA Area: 299.8
RNA Concentration: 143 ng/μl
rRNA Ratio [28s / 18s]: 0.0
RNA Integrity Number (RIN): 2.7 (B.02.07)
Result Flagging Color:
Result Flagging Label: RIN: 2.70

Fragment table for sample 9 : Ex-ds RNA as received

Name	Start Size [nt]	End Size [nt]	Area	% of total Area
18S	990	1,265	3.6	1.2

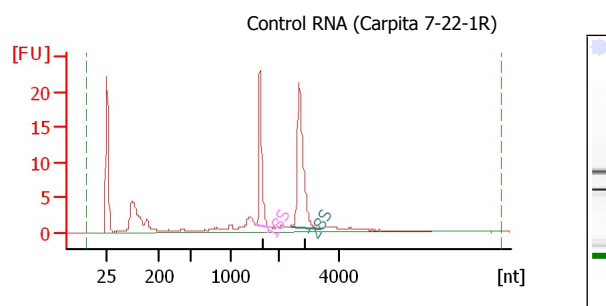


Overall Results for sample 10 : Sed-ds RNA as received

RNA Area: 268.1
RNA Concentration: 128 ng/μl
rRNA Ratio [28s / 18s]: 0.3
RNA Integrity Number (RIN): 2.5 (B.02.07)
Result Flagging Color:
Result Flagging Label: RIN: 2.50

Fragment table for sample 10 : Sed-ds RNA as received

Name	Start Size [nt]	End Size [nt]	Area	% of total Area
18S	1,101	1,252	1.0	0.4
28S	2,586	2,861	0.3	0.1



Overall Results for sample 11 : Control RNA (Carpita 7-22-1R)

RNA Area: 121.6
RNA Concentration: 58 ng/μl
rRNA Ratio [28s / 18s]: 1.7
RNA Integrity Number (RIN): 9.1 (B.02.07)
Result Flagging Color:
Result Flagging Label: RIN: 9.10

Fragment table for sample 11 : Control RNA (Carpita 7-22-1R)

Name	Start Size [nt]	End Size [nt]	Area	% of total Area
18S	1,550	1,808	21.1	17.3
28S	2,379	3,402	36.1	29.7