

Assay Class: Eukaryote Total RNA Nano  
Data Path: D:\...Eukaryote Total RNA Nano\_DE24802235\_2011-05-02\_18-23-38.xad

Created: 5/2/2011 6:23:38 PM  
Modified: 5/2/2011 6:46:27 PM

## Electrophoresis Assay Details

### General Analysis Settings

Number of Available Sample and Ladder Wells (Max.) : 13  
Minimum Visible Range [s] : 17  
Maximum Visible Range [s] : 70  
Start Analysis Time Range [s] : 19  
End Analysis Time Range [s] : 69  
Ladder Concentration [ng/ $\mu$ l] : 150  
Lower Marker Concentration [ng/ $\mu$ l] : 0  
Upper Marker Concentration [ng/ $\mu$ l] : 0  
Used Lower Marker for Quantitation  
Standard Curve Fit is Logarithmic  
Show Data Aligned to Lower Marker

### Integrator Settings

Integration Start Time [s] : 19  
Integration End Time [s] : 69  
Slope Threshold : 0.6  
Height Threshold [FU] : 0.5  
Area Threshold : 0.2  
Width Threshold [s] : 0.5  
Baseline Plateau [s] : 6

### Filter Settings

Filter Width [s] : 0.5  
Polynomial Order : 4

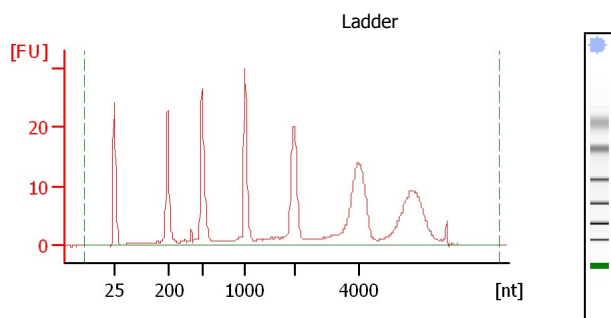
### Ladder

Ladder Peak	Size
1	25
2	200
3	500
4	1000
5	2000
6	4000

Assay Class: Eukaryote Total RNA Nano  
 Data Path: D:\...Eukaryote Total RNA Nano\_DE24802235\_2011-05-02\_18-23-38.xad

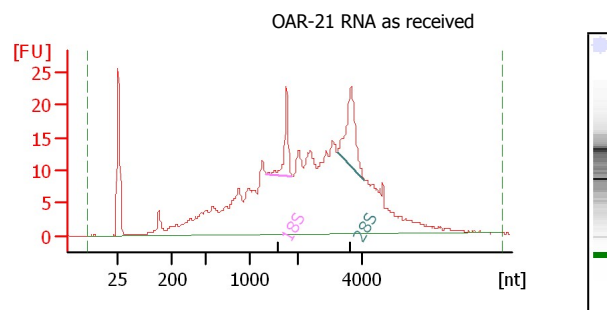
Created: 5/2/2011 6:23:38 PM  
 Modified: 5/2/2011 6:46:27 PM

### Electropherogram Summary



#### Overall Results for Ladder

RNA Area: 315.2  
 RNA Concentration: 150 ng/μl  
 Result Flagging Color:    
 Result Flagging Label: All Other Samples

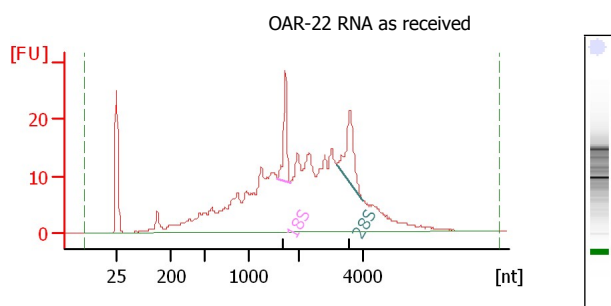


#### Overall Results for sample 1 : OAR-21 RNA as received

RNA Area: 516.5  
 RNA Concentration: 246 ng/μl  
 rRNA Ratio [28s / 18s]: 1.9  
 RNA Integrity Number (RIN): 4.5 (B.02.07)  
 Result Flagging Color:    
 Result Flagging Label: RIN: 4.50

#### Fragment table for sample 1 : OAR-21 RNA as received

Name	Start Size [nt]	End Size [nt]	Area	% of total Area
18S	1,334	1,866	15.8	3.1
28S	3,194	4,045	29.8	5.8

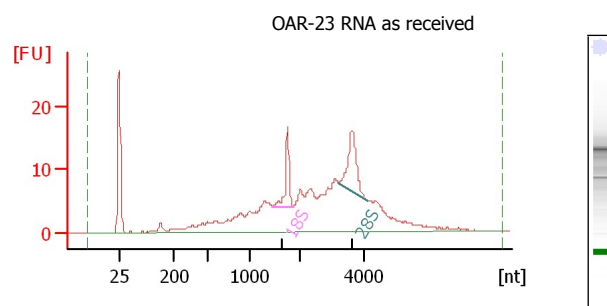


#### Overall Results for sample 2 : OAR-22 RNA as received

RNA Area: 485.4  
 RNA Concentration: 231 ng/μl  
 rRNA Ratio [28s / 18s]: 1.5  
 RNA Integrity Number (RIN): 4.9 (B.02.07)  
 Result Flagging Color:    
 Result Flagging Label: RIN: 4.90

#### Fragment table for sample 2 : OAR-22 RNA as received

Name	Start Size [nt]	End Size [nt]	Area	% of total Area
18S	1,583	1,843	18.7	3.9
28S	3,202	3,996	27.4	5.6



#### Overall Results for sample 3 : OAR-23 RNA as received

RNA Area: 281.4  
 RNA Concentration: 134 ng/μl  
 rRNA Ratio [28s / 18s]: 1.7  
 RNA Integrity Number (RIN): 5.9 (B.02.07)  
 Result Flagging Color:    
 Result Flagging Label: RIN: 5.90

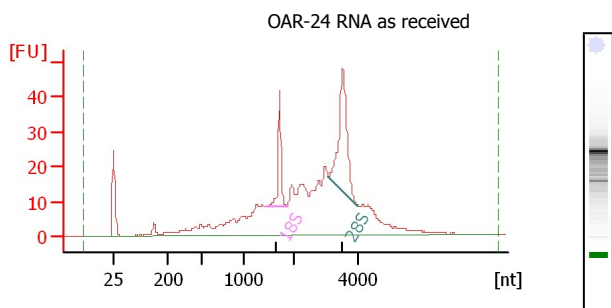
#### Fragment table for sample 3 : OAR-23 RNA as received

Name	Start Size [nt]	End Size [nt]	Area	% of total Area
18S	1,439	1,851	13.1	4.7
28S	3,177	4,103	22.3	7.9

Assay Class: Eukaryote Total RNA Nano  
 Data Path: D:\...Eukaryote Total RNA Nano\_DE24802235\_2011-05-02\_18-23-38.xad

Created: 5/2/2011 6:23:38 PM  
 Modified: 5/2/2011 6:46:27 PM

### Electropherogram Summary Continued ...

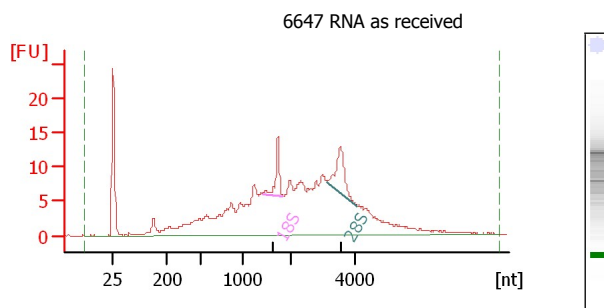


#### Overall Results for sample 4 : OAR-24 RNA as received

RNA Area: 585.2  
 RNA Concentration: 278 ng/μl  
 rRNA Ratio [28s / 18s]: 2.4  
 RNA Integrity Number (RIN): 6.7 (B.02.07)  
 Result Flagging Color:    
 Result Flagging Label: RIN: 6.70

#### Fragment table for sample 4 : OAR-24 RNA as received

Name	Start Size [nt]	End Size [nt]	Area	% of total Area
18S	1,450	1,856	32.2	5.5
28S	3,090	4,009	78.1	13.3

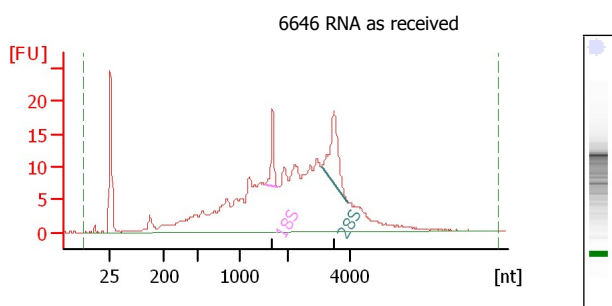


#### Overall Results for sample 5 : 6647 RNA as received

RNA Area: 318.2  
 RNA Concentration: 151 ng/μl  
 rRNA Ratio [28s / 18s]: 1.6  
 RNA Integrity Number (RIN): 4.4 (B.02.07)  
 Result Flagging Color:    
 Result Flagging Label: RIN: 4.40

#### Fragment table for sample 5 : 6647 RNA as received

Name	Start Size [nt]	End Size [nt]	Area	% of total Area
18S	1,401	1,827	9.7	3.0
28S	3,109	4,050	15.9	5.0

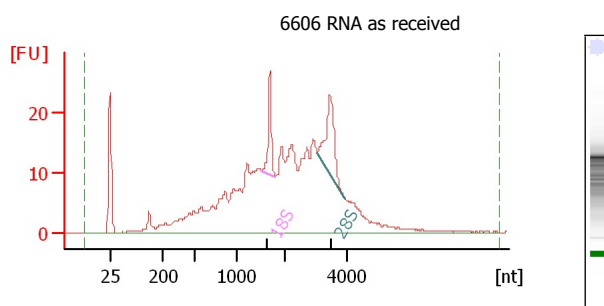


#### Overall Results for sample 6 : 6646 RNA as received

RNA Area: 374.0  
 RNA Concentration: 178 ng/μl  
 rRNA Ratio [28s / 18s]: 2.3  
 RNA Integrity Number (RIN): 5 (B.02.07)  
 Result Flagging Color:    
 Result Flagging Label: RIN: 5

#### Fragment table for sample 6 : 6646 RNA as received

Name	Start Size [nt]	End Size [nt]	Area	% of total Area
18S	1,539	1,789	11.3	3.0
28S	3,062	3,944	25.4	6.8



#### Overall Results for sample 7 : 6606 RNA as received

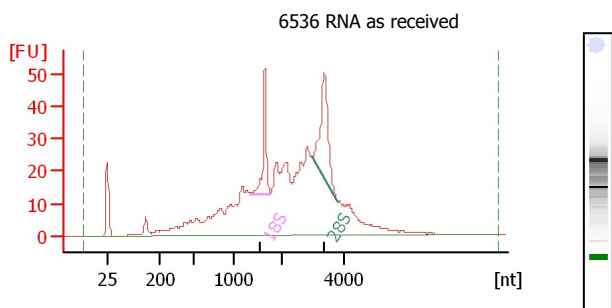
RNA Area: 505.5  
 RNA Concentration: 241 ng/μl  
 rRNA Ratio [28s / 18s]: 1.9  
 RNA Integrity Number (RIN): 4.8 (B.02.07)  
 Result Flagging Color:    
 Result Flagging Label: RIN: 4.80

#### Fragment table for sample 7 : 6606 RNA as received

Name	Start Size [nt]	End Size [nt]	Area	% of total Area
18S	1,498	1,793	17.0	3.4
28S	3,027	3,903	31.6	6.3

Assay Class: Eukaryote Total RNA Nano  
Data Path: D:\...Eukaryote Total RNA Nano\_DE24802235\_2011-05-02\_18-23-38.xad

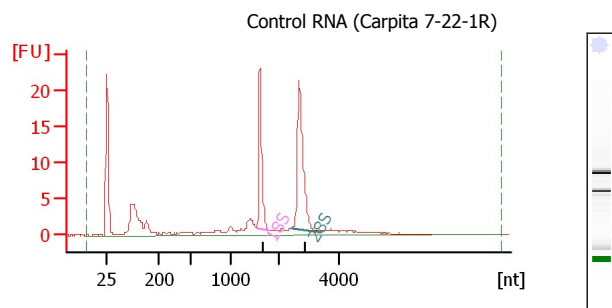
Created: 5/2/2011 6:23:38 PM  
Modified: 5/2/2011 6:46:27 PM

**Electropherogram Summary Continued ...****Overall Results for sample 8 : 6536 RNA as received**

RNA Area: 807.3  
RNA Concentration: 384 ng/μl  
rRNA Ratio [28s / 18s]: 1.8  
RNA Integrity Number (RIN): 5.9 (B.02.07)  
Result Flagging Color:    
Result Flagging Label: RIN: 5.90

**Fragment table for sample 8 : 6536 RNA as received**

Name	Start Size [nt]	End Size [nt]	Area	% of total Area
18S	1,336	1,755	40.4	5.0
28S	2,963	3,832	72.4	9.0

**Overall Results for sample 11 : Control RNA (Carpita 7-22-1R)**

RNA Area: 121.6  
RNA Concentration: 58 ng/μl  
rRNA Ratio [28s / 18s]: 1.7  
RNA Integrity Number (RIN): 9.1 (B.02.07)  
Result Flagging Color:    
Result Flagging Label: RIN: 9.10

**Fragment table for sample 11 : Control RNA (Carpita 7-22-1R)**

Name	Start Size [nt]	End Size [nt]	Area	% of total Area
18S	1,550	1,808	21.1	17.3
28S	2,379	3,402	36.1	29.7