

Assay Class: Eukaryote Total RNA Nano
Data Path: D:\...\Eukaryote Total RNA Nano_DE24802235_2010-11-12_15-36-15.xad

Created: 11/12/2010 3:36:15 PM
Modified: 11/15/2010 12:08:23 PM

Electrophoresis Assay Details

General Analysis Settings

Number of Available Sample and Ladder Wells (Max.) : 13
Minimum Visible Range [s] : 17
Maximum Visible Range [s] : 70
Start Analysis Time Range [s] : 19
End Analysis Time Range [s] : 69
Ladder Concentration [ng/ μ l] : 150
Lower Marker Concentration [ng/ μ l] : 0
Upper Marker Concentration [ng/ μ l] : 0
Used Lower Marker for Quantitation
Standard Curve Fit is Logarithmic
Show Data Aligned to Lower Marker

Integrator Settings

Integration Start Time [s] : 19
Integration End Time [s] : 69
Slope Threshold : 0.6
Height Threshold [FU] : 0.5
Area Threshold : 0.2
Width Threshold [s] : 0.5
Baseline Plateau [s] : 6

Filter Settings

Filter Width [s] : 0.5
Polynomial Order : 4

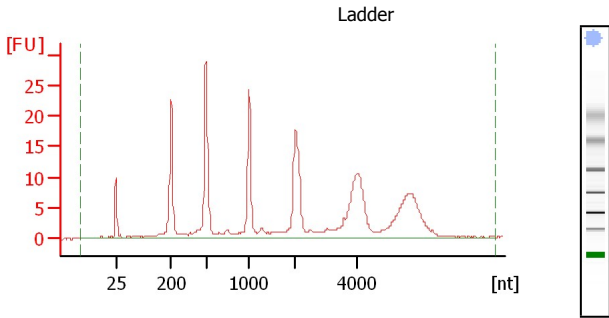
Ladder

Ladder Peak	Size
1	25
2	200
3	500
4	1000
5	2000
6	4000

Assay Class: Eukaryote Total RNA Nano
 Data Path: D:\...Eukaryote Total RNA Nano_DE24802235_2010-11-12_15-36-15.xad

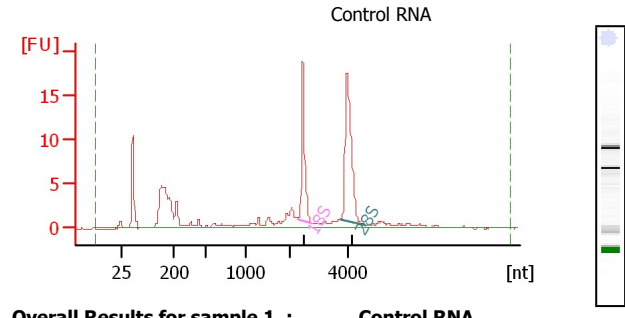
Created: 11/12/2010 3:36:15 PM
 Modified: 11/15/2010 12:08:23 PM

Electropherogram Summary



Overall Results for Ladder

RNA Area: 262.8
 RNA Concentration: 150 ng/μl
 Result Flagging Color:
 Result Flagging Label: All Other Samples

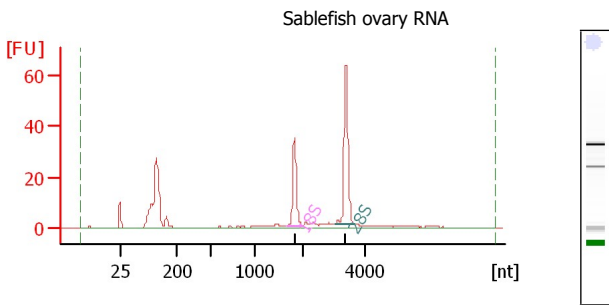


Overall Results for sample 1 : Control RNA

RNA Area: 120.9
 RNA Concentration: 69 ng/μl
 rRNA Ratio [28s / 18s]: 1.6
 RNA Integrity Number (RIN): 7.9 (B.02.07)
 Result Flagging Color:
 Result Flagging Label: RIN: 7.90

Fragment table for sample 1 : Control RNA

Name	Start Size [nt]	End Size [nt]	Area	% of total Area
18S	2,238	2,759	17.6	14.5
28S	3,699	4,610	29.0	24.0

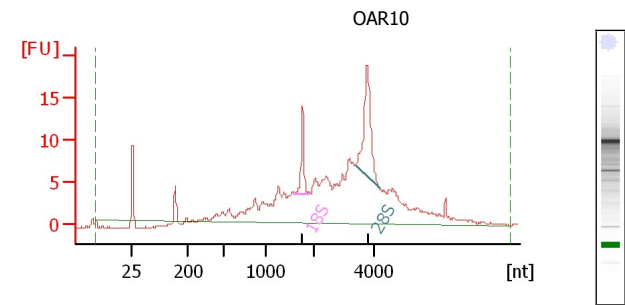


Overall Results for sample 2 : Sablefish ovary RNA

RNA Area: 258.7
 RNA Concentration: 148 ng/μl
 rRNA Ratio [28s / 18s]: 1.7
 RNA Integrity Number (RIN): 9.4 (B.02.07)
 Result Flagging Color:
 Result Flagging Label: RIN: 9.40

Fragment table for sample 2 : Sablefish ovary RNA

Name	Start Size [nt]	End Size [nt]	Area	% of total Area
18S	1,654	2,011	39.8	15.4
28S	3,033	3,679	66.2	25.6



Overall Results for sample 6 : OAR10

RNA Area: 229.4
 RNA Concentration: 131 ng/μl
 rRNA Ratio [28s / 18s]: 2.5
 RNA Integrity Number (RIN): 5.3 (B.02.07)
 Result Flagging Color:
 Result Flagging Label: RIN: 5.30

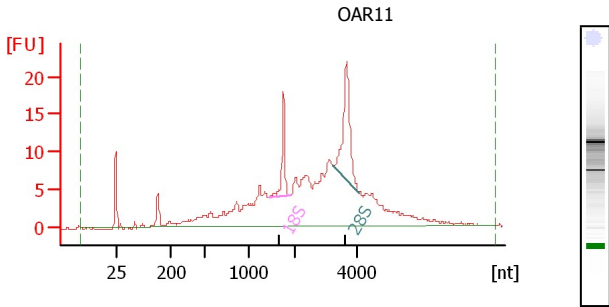
Fragment table for sample 6 : OAR10

Name	Start Size [nt]	End Size [nt]	Area	% of total Area
18S	1,608	1,940	9.4	4.1
28S	3,392	4,141	23.6	10.3

Assay Class: Eukaryote Total RNA Nano
 Data Path: D:\...Eukaryote Total RNA Nano_DE24802235_2010-11-12_15-36-15.xad

Created: 11/12/2010 3:36:15 PM
 Modified: 11/15/2010 12:08:23 PM

Electropherogram Summary Continued ...

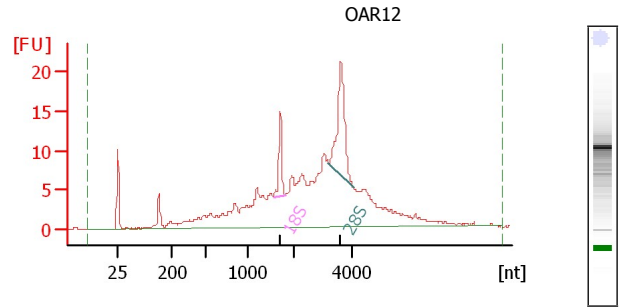


Overall Results for sample 7 : OAR11

RNA Area: 279.6
 RNA Concentration: 160 ng/µl
 rRNA Ratio [28s / 18s]: 2.2
 RNA Integrity Number (RIN): 5.8 (B.02.07)
 Result Flagging Color:
 Result Flagging Label: RIN: 5.80

Fragment table for sample 7 : OAR11

Name	Start Size [nt]	End Size [nt]	Area	% of total Area
18S	1,439	1,908	12.8	4.6
28S	3,261	4,071	28.4	10.2



Overall Results for sample 9 : OAR12

RNA Area: 286.2
 RNA Concentration: 163 ng/µl
 rRNA Ratio [28s / 18s]: 3.0
 RNA Integrity Number (RIN): 5.4 (B.02.07)
 Result Flagging Color:
 Result Flagging Label: RIN: 5.40

Fragment table for sample 9 : OAR12

Name	Start Size [nt]	End Size [nt]	Area	% of total Area
18S	1,554	1,822	9.5	3.3
28S	3,191	4,021	28.9	10.1