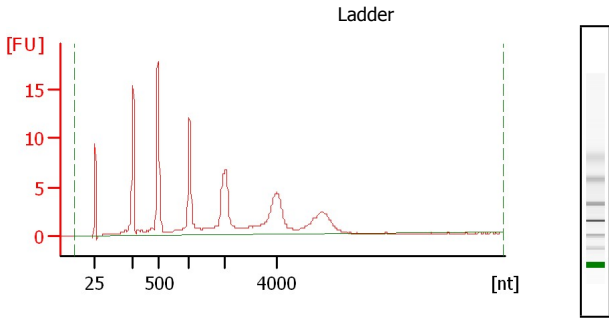


Assay Class: mRNA Pico
 Data Path: D:\...11\2100 expert_mRNA Pico_DE24802235_2011-04-11_17-53-30.xad

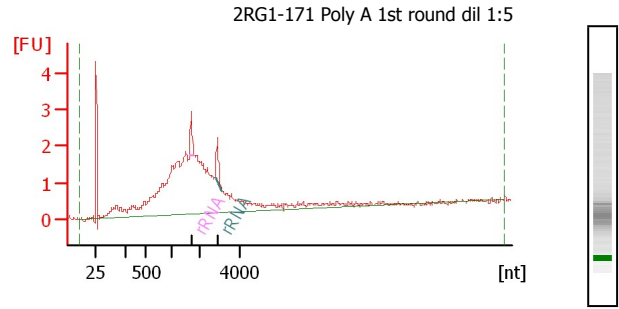
Created: 4/11/2011 5:53:30 PM
 Modified: 4/11/2011 6:12:36 PM

Electropherogram Summary



Overall Results for Ladder

RNA Area: 149.6
 RNA Concentration: 1,000 pg/μl

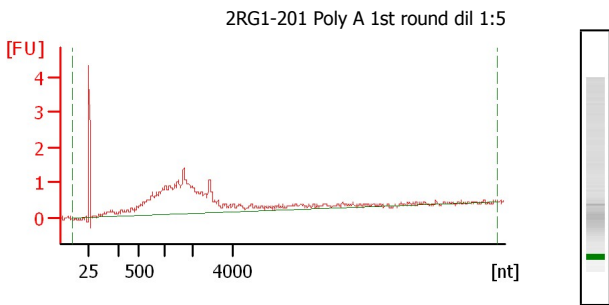


Overall Results for sample 2

RNA Area: 56.8
 RNA Concentration: 380 pg/μl
 rRNA Contamination: 4.5 %

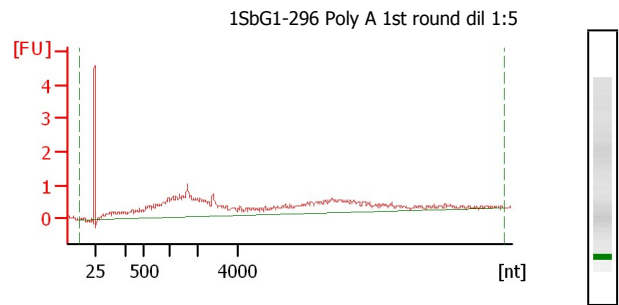
Fragment table for sample 2

Name	Start Size [nt]	End Size [nt]	Area	% of total Area
rRNA	1,646	1,820	1.2	2.1
rRNA	2,759	3,081	1.4	2.5



Overall Results for sample 3

RNA Area: 34.7
 RNA Concentration: 232 pg/μl
 rRNA Contamination: 0.0 %



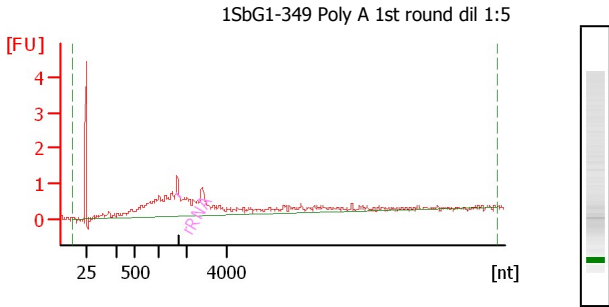
Overall Results for sample 4

RNA Area: 36.9
 RNA Concentration: 246 pg/μl
 rRNA Contamination: 0.0 %

Assay Class: mRNA Pico
 Data Path: D:\...11\2100 expert_mRNA Pico_DE24802235_2011-04-11_17-53-30.xad

Created: 4/11/2011 5:53:30 PM
 Modified: 4/11/2011 6:12:36 PM

Electropherogram Summary Continued ...

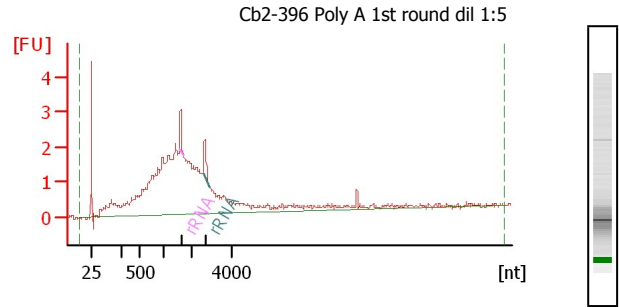


Overall Results for sample 5

RNA Area: 25.6
 RNA Concentration: 171 pg/μl
 rRNA Contamination: 2.3 %

Fragment table for sample 5

Name	Start Size [nt]	End Size [nt]	Area	% of total Area
rRNA	1,582	1,749	0.6	2.3

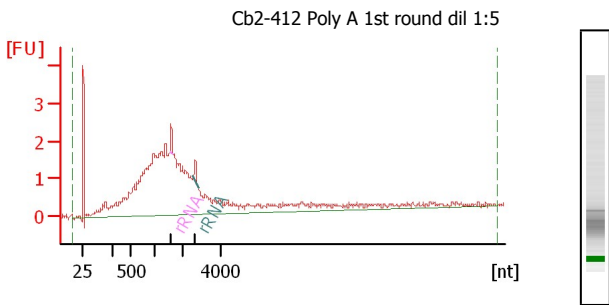


Overall Results for sample 6

RNA Area: 71.8
 RNA Concentration: 480 pg/μl
 rRNA Contamination: 3.4 %

Fragment table for sample 6

Name	Start Size [nt]	End Size [nt]	Area	% of total Area
rRNA	1,558	1,716	1.1	1.6
rRNA	2,572	2,906	1.3	1.8



Overall Results for sample 7

RNA Area: 64.7
 RNA Concentration: 433 pg/μl
 rRNA Contamination: 1.9 %

Fragment table for sample 7

Name	Start Size [nt]	End Size [nt]	Area	% of total Area
rRNA	1,548	1,673	0.6	1.0
rRNA	2,587	2,812	0.6	0.9