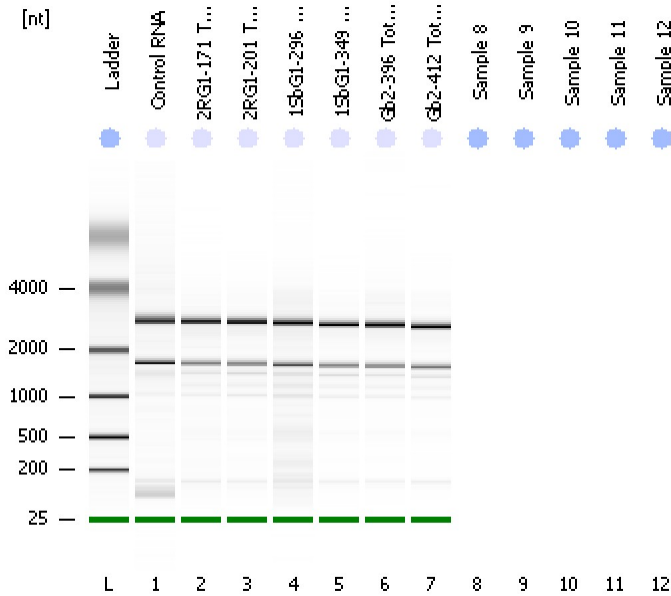


Assay Class: Eukaryote Total RNA Nano  
 Data Path: D:\...Eukaryote Total RNA Nano\_DE24802235\_2011-04-04\_17-41-21.xad

Created: 4/4/2011 5:41:21 PM  
 Modified: 4/4/2011 5:58:42 PM

**Electrophoresis File Run Summary**



Instrument Information:

Instrument Name: Ann's baby      Firmware: C.01.069  
 Serial#: DE24802235      Type: G2938B

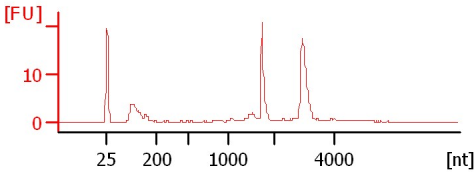
Assay Information:

Assay Origin Path: D:\Program Files\Agilent\2100 bioanalyzer\2100 expert\assays\RNA\Eukaryote Total RNA Nano Series II.xsy  
 Assay Class: Eukaryote Total RNA Nano  
 Version: 2.6  
 Assay Comments: Total RNA Analysis ng sensitivity (Eukaryote)  
 © Copyright 2003 - 2009 Agilent Technologies, Inc.

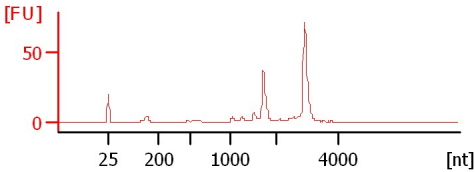
Chip Information:

Chip Lot #:      Reagent Kit Lot #:      Chip Comments:

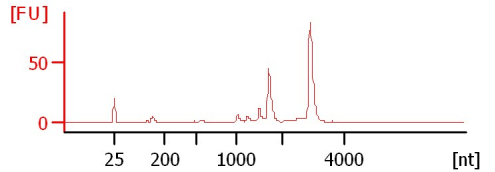
**Control RNA**  
 RIN: 9.10



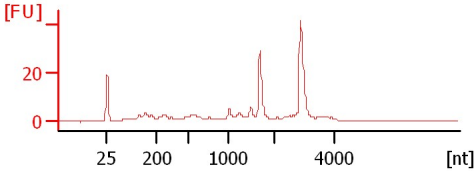
**2RG1-171 Total RNA as received**  
 RIN: 8.50



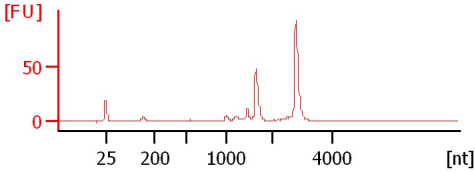
**2RG1-201 Total RNA as received**  
 RIN: 8.60



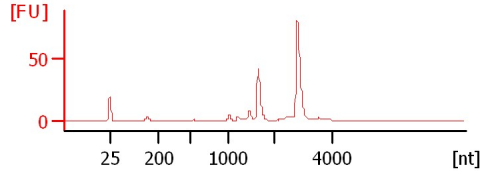
**1SbG1-296 Total RNA as received**  
 RIN: 7.90



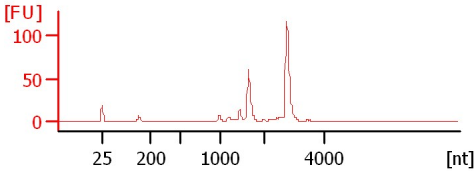
**1SbG1-349 Total RNA as received**  
 RIN: 8.80



**Gb2-396 Total RNA as received**  
 RIN: 9



**Gb2-412 Total RNA as received**  
 RIN: 8.90



Assay Class: Eukaryote Total RNA Nano  
 Data Path: D:\...Eukaryote Total RNA Nano\_DE24802235\_2011-04-04\_17-41-21.xad

Created: 4/4/2011 5:41:21 PM  
 Modified: 4/4/2011 5:58:42 PM

**Electrophoresis File Run Summary (Chip Summary)**

Sample Name	Sample Comment	Status	Result Label	Result Color
Control RNA		✓	RIN: 9.10	
2RG1-171 Total RNA as received		✓	RIN: 8.50	
2RG1-201 Total RNA as received		✓	RIN: 8.60	
1SbG1-296 Total RNA as received		✓	RIN: 7.90	
1SbG1-349 Total RNA as received		✓	RIN: 8.80	
Gb2-396 Total RNA as received		✓	RIN:9	
Gb2-412 Total RNA as received		✓	RIN: 8.90	
Sample 8				
Sample 9				
Sample 10				
Sample 11				
Sample 12				

**Chip Lot #**

**Reagent Kit Lot #**

**Chip Comments :**

Assay Class: Eukaryote Total RNA Nano  
Data Path: D:\...Eukaryote Total RNA Nano\_DE24802235\_2011-04-04\_17-41-21.xad

Created: 4/4/2011 5:41:21 PM  
Modified: 4/4/2011 5:58:42 PM

## Electrophoresis Assay Details

### General Analysis Settings

Number of Available Sample and Ladder Wells (Max.) : 13  
Minimum Visible Range [s] : 17  
Maximum Visible Range [s] : 70  
Start Analysis Time Range [s] : 19  
End Analysis Time Range [s] : 69  
Ladder Concentration [ng/ $\mu$ l] : 150  
Lower Marker Concentration [ng/ $\mu$ l] : 0  
Upper Marker Concentration [ng/ $\mu$ l] : 0  
Used Lower Marker for Quantitation  
Standard Curve Fit is Logarithmic  
Show Data Aligned to Lower Marker

### Integrator Settings

Integration Start Time [s] : 19  
Integration End Time [s] : 69  
Slope Threshold : 0.6  
Height Threshold [FU] : 0.5  
Area Threshold : 0.2  
Width Threshold [s] : 0.5  
Baseline Plateau [s] : 6

### Filter Settings

Filter Width [s] : 0.5  
Polynomial Order : 4

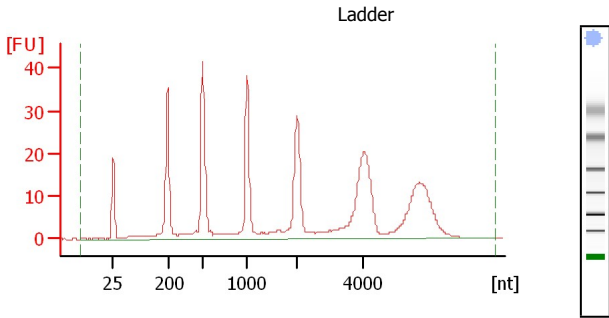
### Ladder

Ladder Peak	Size
1	25
2	200
3	500
4	1000
5	2000
6	4000

Assay Class: Eukaryote Total RNA Nano  
 Data Path: D:\...Eukaryote Total RNA Nano\_DE24802235\_2011-04-04\_17-41-21.xad

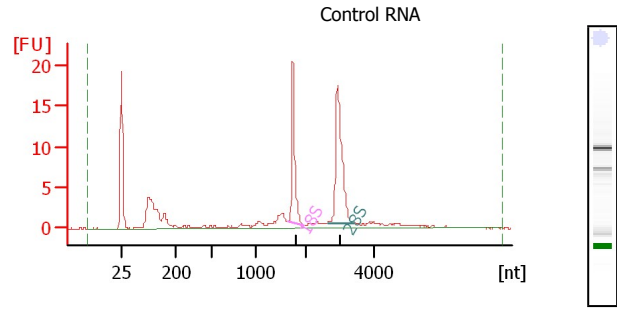
Created: 4/4/2011 5:41:21 PM  
 Modified: 4/4/2011 5:58:42 PM

**Electropherogram Summary**



**Overall Results for Ladder**

RNA Area: 445.5  
 RNA Concentration: 150 ng/μl  
 Result Flagging Color:    
 Result Flagging Label: All Other Samples

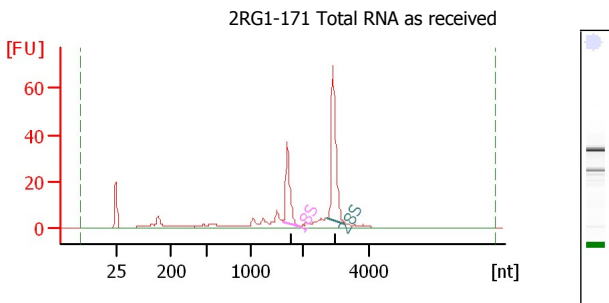


**Overall Results for sample 1 : Control RNA**

RNA Area: 107.3  
 RNA Concentration: 36 ng/μl  
 rRNA Ratio [28s / 18s]: 1.6  
 RNA Integrity Number (RIN): 9.1 (B.02.07)  
 Result Flagging Color:    
 Result Flagging Label: RIN: 9.10

**Fragment table for sample 1 : Control RNA**

Name	Start Size [nt]	End Size [nt]	Area	% of total Area
18S	1,628	1,951	18.8	17.5
28S	2,631	3,385	29.6	27.6

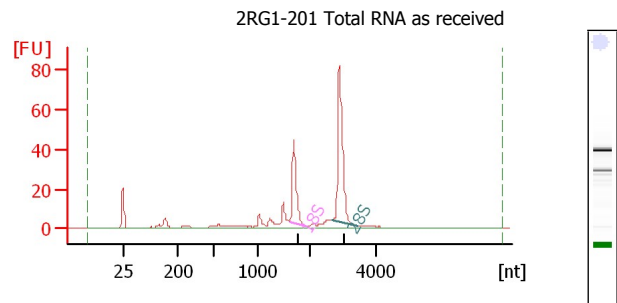


**Overall Results for sample 2 : 2RG1-171 Total RNA as received**

RNA Area: 258.6  
 RNA Concentration: 87 ng/μl  
 rRNA Ratio [28s / 18s]: 1.9  
 RNA Integrity Number (RIN): 8.5 (B.02.07)  
 Result Flagging Color:    
 Result Flagging Label: RIN: 8.50

**Fragment table for sample 2 : 2RG1-171 Total RNA as received**

Name	Start Size [nt]	End Size [nt]	Area	% of total Area
18S	1,624	1,920	42.6	16.5
28S	2,754	3,279	81.7	31.6



**Overall Results for sample 3 : 2RG1-201 Total RNA as received**

RNA Area: 290.5  
 RNA Concentration: 98 ng/μl  
 rRNA Ratio [28s / 18s]: 2.0  
 RNA Integrity Number (RIN): 8.6 (B.02.07)  
 Result Flagging Color:    
 Result Flagging Label: RIN: 8.60

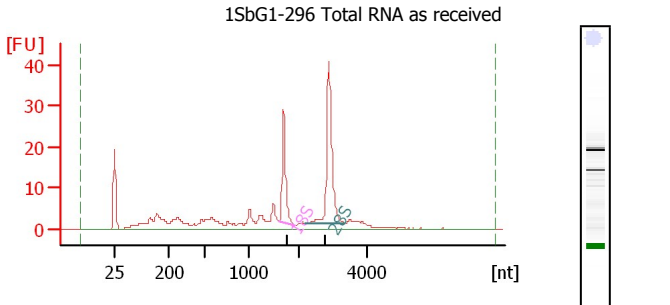
**Fragment table for sample 3 : 2RG1-201 Total RNA as received**

Name	Start Size [nt]	End Size [nt]	Area	% of total Area
18S	1,616	1,937	51.8	17.8
28S	2,679	3,454	103.8	35.7

Assay Class: Eukaryote Total RNA Nano  
 Data Path: D:\...Eukaryote Total RNA Nano\_DE24802235\_2011-04-04\_17-41-21.xad

Created: 4/4/2011 5:41:21 PM  
 Modified: 4/4/2011 5:58:42 PM

**Electropherogram Summary Continued ...**

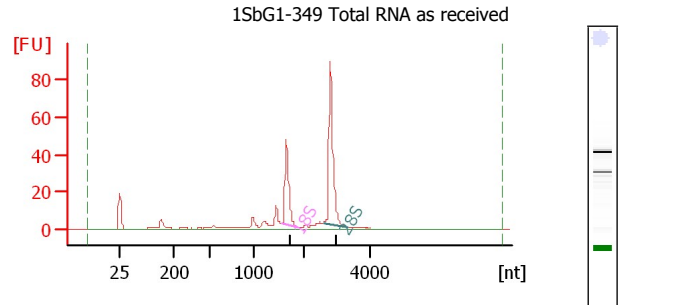


**Overall Results for sample 4 : 1SbG1-296 Total RNA as received**

RNA Area: 225.0  
 RNA Concentration: 76 ng/µl  
 rRNA Ratio [28s / 18s]: 2.0  
 RNA Integrity Number (RIN): 7.9 (B.02.07)  
 Result Flagging Color:    
 Result Flagging Label: RIN: 7.90

**Fragment table for sample 4 : 1SbG1-296 Total RNA as received**

Name	Start Size [nt]	End Size [nt]	Area	% of total Area
18S	1,587	1,902	29.9	13.3
28S	2,165	3,360	58.4	26.0

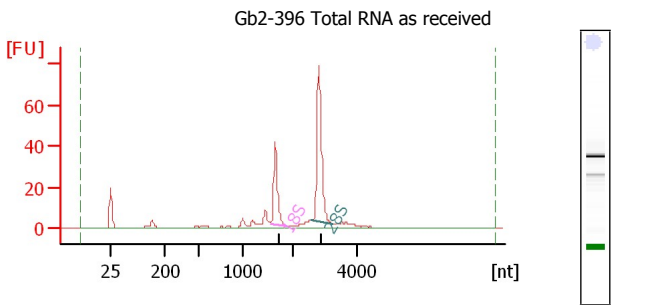


**Overall Results for sample 5 : 1SbG1-349 Total RNA as received**

RNA Area: 262.7  
 RNA Concentration: 88 ng/µl  
 rRNA Ratio [28s / 18s]: 1.9  
 RNA Integrity Number (RIN): 8.8 (B.02.07)  
 Result Flagging Color:    
 Result Flagging Label: RIN: 8.80

**Fragment table for sample 5 : 1SbG1-349 Total RNA as received**

Name	Start Size [nt]	End Size [nt]	Area	% of total Area
18S	1,573	1,874	53.4	20.3
28S	2,608	3,369	101.2	38.5

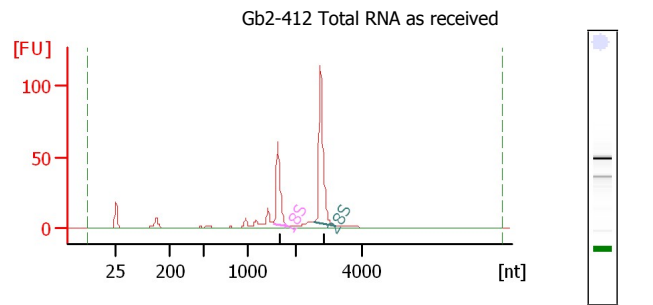


**Overall Results for sample 6 : Gb2-396 Total RNA as received**

RNA Area: 257.1  
 RNA Concentration: 87 ng/µl  
 rRNA Ratio [28s / 18s]: 2.1  
 RNA Integrity Number (RIN): 9 (B.02.07)  
 Result Flagging Color:    
 Result Flagging Label: RIN:9

**Fragment table for sample 6 : Gb2-396 Total RNA as received**

Name	Start Size [nt]	End Size [nt]	Area	% of total Area
18S	1,566	1,904	48.3	18.8
28S	2,559	3,239	99.9	38.9



**Overall Results for sample 7 : Gb2-412 Total RNA as received**

RNA Area: 346.9  
 RNA Concentration: 117 ng/µl  
 rRNA Ratio [28s / 18s]: 1.9  
 RNA Integrity Number (RIN): 8.9 (B.02.07)  
 Result Flagging Color:    
 Result Flagging Label: RIN: 8.90

**Fragment table for sample 7 : Gb2-412 Total RNA as received**

Name	Start Size [nt]	End Size [nt]	Area	% of total Area
18S	1,543	1,849	70.5	20.3
28S	2,535	3,220	137.3	39.6