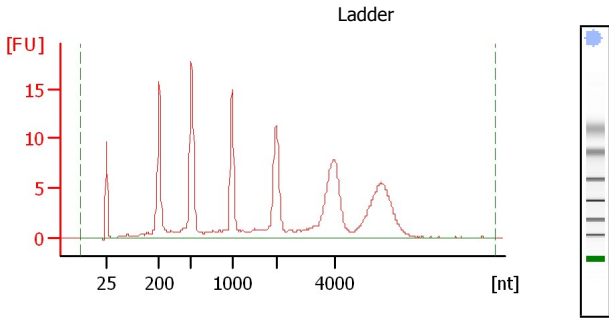


Assay Class: Eukaryote Total RNA Nano  
 Data Path: D:\...Eukaryote Total RNA Nano\_DE24802235\_2012-07-03\_12-16-12.xad

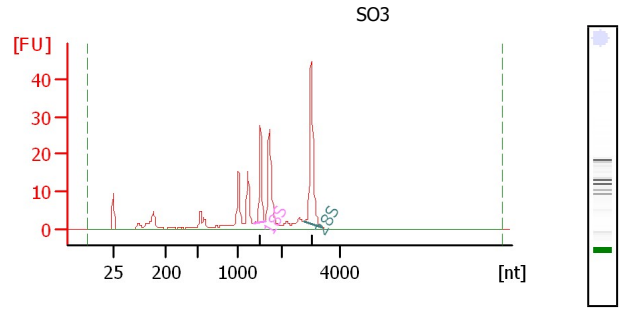
Created: 7/3/2012 12:16:12 PM  
 Modified: 7/3/2012 12:43:14 PM

**Electropherogram Summary**



**Overall Results for Ladder**

RNA Area: 185.5  
 RNA Concentration: 150 ng/μl  
 Result Flagging Color:   
 Result Flagging Label: All Other Samples

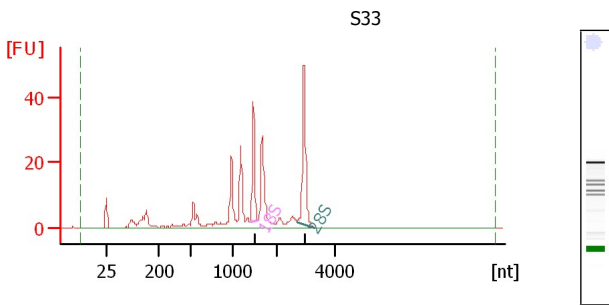


**Overall Results for sample 1 : SO3**

RNA Area: 199.3  
 RNA Concentration: 161 ng/μl  
 rRNA Ratio [28s / 18s]: 2.3  
 RNA Integrity Number (RIN): 7.9 (B.02.08, Anomaly Threshold(s) manually adapted)  
 Result Flagging Color:   
 Result Flagging Label: RIN: 7.90

**Fragment table for sample 1 : SO3**

Name	Start Size [nt]	End Size [nt]	Area	% of total Area
18S	1,340	1,617	19.9	10.0
28S	2,762	3,353	46.6	23.4

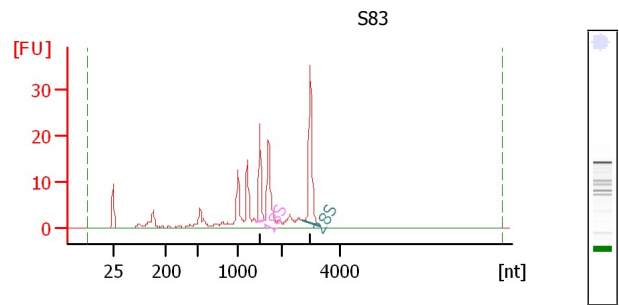


**Overall Results for sample 2 : S33**

RNA Area: 252.5  
 RNA Concentration: 204 ng/μl  
 rRNA Ratio [28s / 18s]: 1.7  
 RNA Integrity Number (RIN): 7.1 (B.02.08, Anomaly Threshold(s) manually adapted)  
 Result Flagging Color:   
 Result Flagging Label: RIN: 7.10

**Fragment table for sample 2 : S33**

Name	Start Size [nt]	End Size [nt]	Area	% of total Area
18S	1,419	1,600	28.4	11.2
28S	2,719	3,309	48.6	19.2



**Overall Results for sample 3 : S83**

RNA Area: 167.6  
 RNA Concentration: 136 ng/μl  
 rRNA Ratio [28s / 18s]: 2.1  
 RNA Integrity Number (RIN): 7.6 (B.02.08, Anomaly Threshold(s) manually adapted)  
 Result Flagging Color:   
 Result Flagging Label: RIN: 7.60

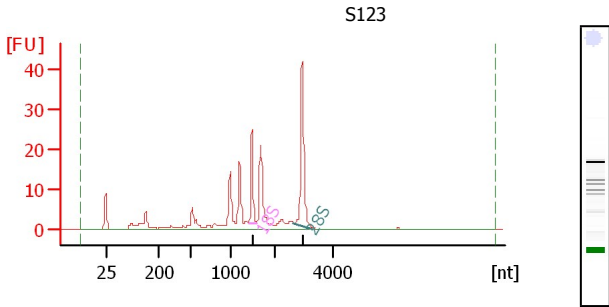
**Fragment table for sample 3 : S83**

Name	Start Size [nt]	End Size [nt]	Area	% of total Area
18S	1,416	1,607	16.2	9.7
28S	2,690	3,325	34.2	20.4

Assay Class: Eukaryote Total RNA Nano  
 Data Path: D:\...Eukaryote Total RNA Nano\_DE24802235\_2012-07-03\_12-16-12.xad

Created: 7/3/2012 12:16:12 PM  
 Modified: 7/3/2012 12:43:14 PM

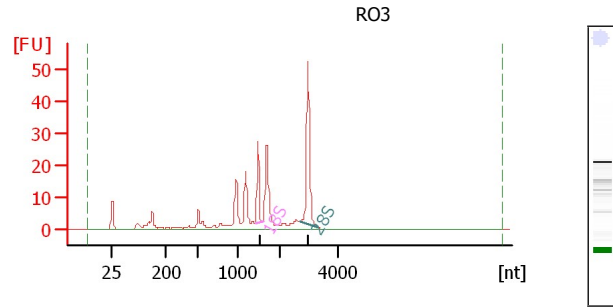
**Electropherogram Summary Continued ...**



**Overall Results for sample 4 : S123**  
 RNA Area: 182.2  
 RNA Concentration: 147 ng/µl  
 rRNA Ratio [28s / 18s]: 2.3  
 RNA Integrity Number (RIN): 7.7 (B.02.08, Anomaly Threshold(s) manually adapted)  
 Result Flagging Color:    
 Result Flagging Label: RIN: 7.70

**Fragment table for sample 4 : S123**

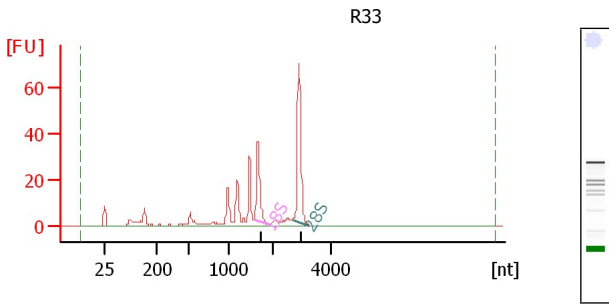
Name	Start Size [nt]	End Size [nt]	Area	% of total Area
18S	1,414	1,605	18.0	9.9
28S	2,661	3,355	41.1	22.6



**Overall Results for sample 5 : R03**  
 RNA Area: 211.4  
 RNA Concentration: 171 ng/µl  
 rRNA Ratio [28s / 18s]: 2.5  
 RNA Integrity Number (RIN): 7.8 (B.02.08, Anomaly Threshold(s) manually adapted)  
 Result Flagging Color:    
 Result Flagging Label: RIN: 7.80

**Fragment table for sample 5 : R03**

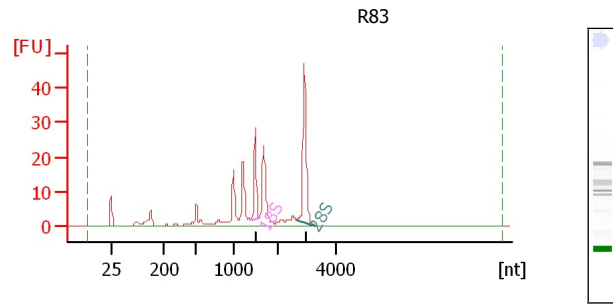
Name	Start Size [nt]	End Size [nt]	Area	% of total Area
18S	1,412	1,594	19.5	9.2
28S	2,690	3,313	49.0	23.2



**Overall Results for sample 6 : R33**  
 RNA Area: 275.6  
 RNA Concentration: 223 ng/µl  
 rRNA Ratio [28s / 18s]: 1.7  
 RNA Integrity Number (RIN): 7.8 (B.02.08, Anomaly Threshold(s) manually adapted)  
 Result Flagging Color:    
 Result Flagging Label: RIN: 7.80

**Fragment table for sample 6 : R33**

Name	Start Size [nt]	End Size [nt]	Area	% of total Area
18S	1,582	1,890	41.7	15.1
28S	2,661	3,271	71.2	25.8



**Overall Results for sample 7 : R83**  
 RNA Area: 203.5  
 RNA Concentration: 165 ng/µl  
 rRNA Ratio [28s / 18s]: 2.2  
 RNA Integrity Number (RIN): 7.7 (B.02.08, Anomaly Threshold(s) manually adapted)  
 Result Flagging Color:    
 Result Flagging Label: RIN: 7.70

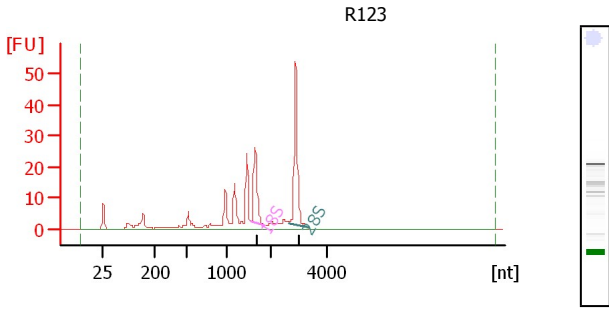
**Fragment table for sample 7 : R83**

Name	Start Size [nt]	End Size [nt]	Area	% of total Area
18S	1,395	1,578	20.3	10.0
28S	2,646	3,317	44.4	21.8

Assay Class: Eukaryote Total RNA Nano  
 Data Path: D:\...Eukaryote Total RNA Nano\_DE24802235\_2012-07-03\_12-16-12.xad

Created: 7/3/2012 12:16:12 PM  
 Modified: 7/3/2012 12:43:14 PM

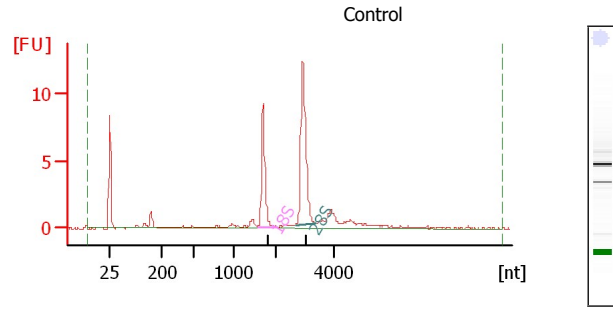
**Electropherogram Summary Continued ...**



**Overall Results for sample 8 : R123**  
 RNA Area: 207.5  
 RNA Concentration: 168 ng/µl  
 rRNA Ratio [28s / 18s]: 1.8  
 RNA Integrity Number (RIN): 7.8 (B.02.08, Anomaly Threshold(s) manually adapted)  
 Result Flagging Color:    
 Result Flagging Label: RIN: 7.80

**Fragment table for sample 8 : R123**

Name	Start Size [nt]	End Size [nt]	Area	% of total Area
18S	1,567	1,886	28.6	13.8
28S	2,632	3,319	52.1	25.1



**Overall Results for sample 9 : Control**  
 RNA Area: 43.2  
 RNA Concentration: 35 ng/µl  
 rRNA Ratio [28s / 18s]: 1.8  
 RNA Integrity Number (RIN): 9.9 (B.02.08, Anomaly Threshold(s) manually adapted)  
 Result Flagging Color:    
 Result Flagging Label: RIN: 9.90

**Fragment table for sample 9 : Control**

Name	Start Size [nt]	End Size [nt]	Area	% of total Area
18S	1,574	2,046	10.4	24.0
28S	2,661	3,393	19.1	44.3

Assay Class: Eukaryote Total RNA Nano  
Data Path: D:\...Eukaryote Total RNA Nano\_DE24802235\_2012-07-03\_12-16-12.xad

Created: 7/3/2012 12:16:12 PM  
Modified: 7/3/2012 12:43:14 PM

**Curves**

**Standard Curve**

