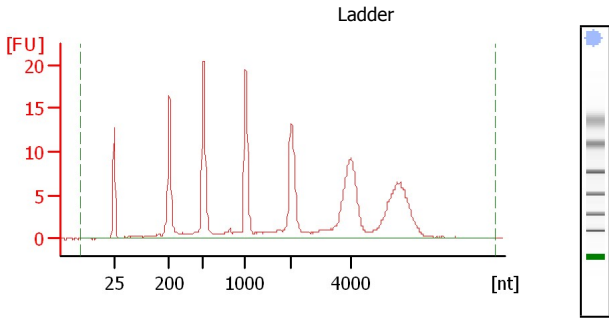


Assay Class: Eukaryote Total RNA Nano
 Data Path: D:\...Eukaryote Total RNA Nano_DE24802235_2012-06-12_15-08-07.xad

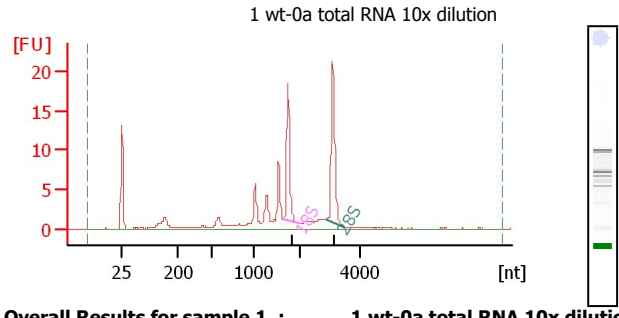
Created: 6/12/2012 3:08:07 PM
 Modified: 6/12/2012 3:40:20 PM

Electropherogram Summary



Overall Results for Ladder

RNA Area: 201.1
 RNA Concentration: 150 ng/μl
 Result Flagging Color:
 Result Flagging Label: All Other Samples

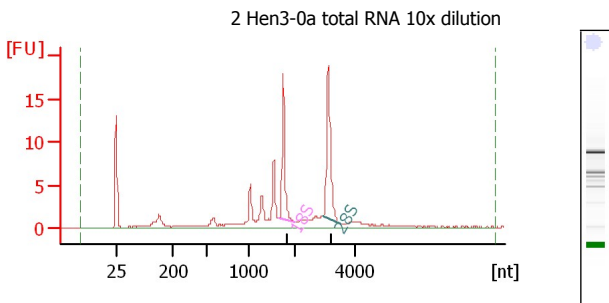


Overall Results for sample 1 : 1 wt-0a total RNA 10x dilution

RNA Area: 87.0
 RNA Concentration: 65 ng/μl
 rRNA Ratio [28s / 18s]: 1.3
 RNA Integrity Number (RIN): 7.3 (B.02.08, Anomaly Threshold(s) manually adapted)
 Result Flagging Color:
 Result Flagging Label: RIN: 7.30

Fragment table for sample 1 : 1 wt-0a total RNA 10x dilution

Name	Start Size [nt]	End Size [nt]	Area	% of total Area
18S	1,651	2,030	15.2	17.5
28S	2,866	3,437	20.4	23.5

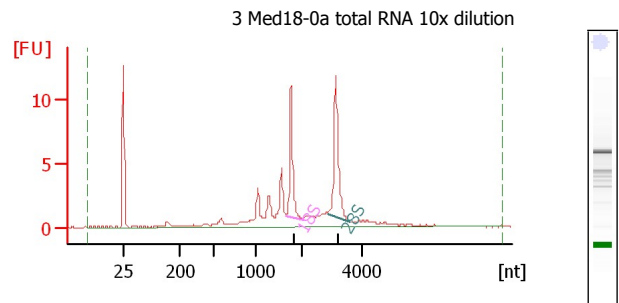


Overall Results for sample 2 : 2 Hen3-0a total RNA 10x dilution

RNA Area: 92.7
 RNA Concentration: 69 ng/μl
 rRNA Ratio [28s / 18s]: 1.3
 RNA Integrity Number (RIN): 7.4 (B.02.08, Anomaly Threshold(s) manually adapted)
 Result Flagging Color:
 Result Flagging Label: RIN: 7.40

Fragment table for sample 2 : 2 Hen3-0a total RNA 10x dilution

Name	Start Size [nt]	End Size [nt]	Area	% of total Area
18S	1,638	1,986	14.6	15.7
28S	2,906	3,501	19.3	20.8



Overall Results for sample 3 : 3 Med18-0a total RNA 10x dilution

RNA Area: 62.4
 RNA Concentration: 47 ng/μl
 rRNA Ratio [28s / 18s]: 1.4
 RNA Integrity Number (RIN): 7.6 (B.02.08, Anomaly Threshold(s) manually adapted)
 Result Flagging Color:
 Result Flagging Label: RIN: 7.60

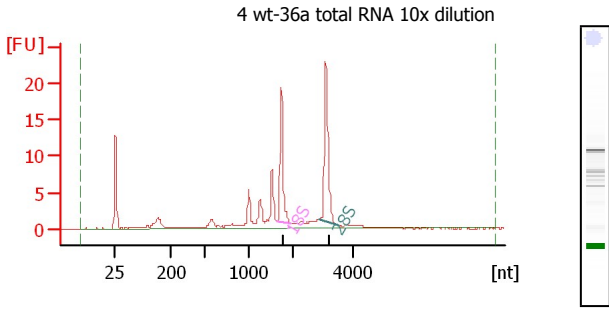
Fragment table for sample 3 : 3 Med18-0a total RNA 10x dilution

Name	Start Size [nt]	End Size [nt]	Area	% of total Area
18S	1,638	2,034	10.0	16.0
28S	2,851	3,584	13.5	21.7

Assay Class: Eukaryote Total RNA Nano
 Data Path: D:\...Eukaryote Total RNA Nano_DE24802235_2012-06-12_15-08-07.xad

Created: 6/12/2012 3:08:07 PM
 Modified: 6/12/2012 3:40:20 PM

Electropherogram Summary Continued ...

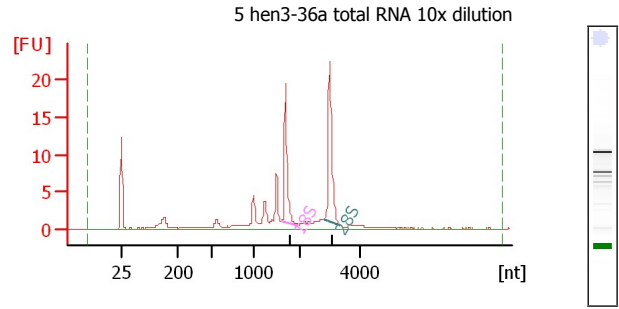


Overall Results for sample 4 : 4 wt-36a total RNA 10x dilution

RNA Area: 90.9
 RNA Concentration: 68 ng/μl
 rRNA Ratio [28s / 18s]: 1.4
 RNA Integrity Number (RIN): 7.6 (B.02.08, Anomaly Threshold(s) manually adapted)
 Result Flagging Color:
 Result Flagging Label: RIN: 7.60

Fragment table for sample 4 : 4 wt-36a total RNA 10x dilution

Name	Start Size [nt]	End Size [nt]	Area	% of total Area
18S	1,634	1,947	16.1	17.7
28S	2,851	3,477	23.0	25.3

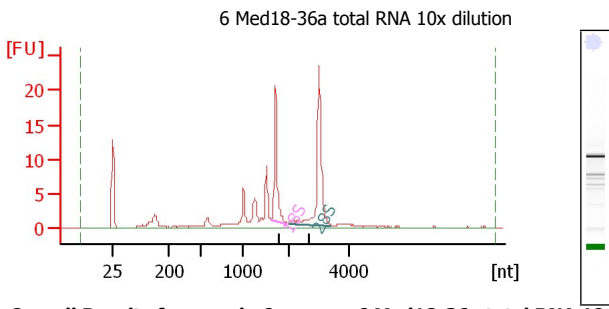


Overall Results for sample 5 : 5 hen3-36a total RNA 10x dilution

RNA Area: 93.4
 RNA Concentration: 70 ng/μl
 rRNA Ratio [28s / 18s]: 1.4
 RNA Integrity Number (RIN): 7.6 (B.02.08, Anomaly Threshold(s) manually adapted)
 Result Flagging Color:
 Result Flagging Label: RIN: 7.60

Fragment table for sample 5 : 5 hen3-36a total RNA 10x dilution

Name	Start Size [nt]	End Size [nt]	Area	% of total Area
18S	1,612	1,982	16.1	17.2
28S	2,838	3,397	22.6	24.2

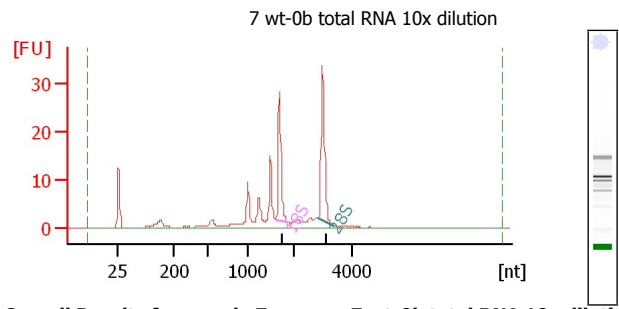


Overall Results for sample 6 : 6 Med18-36a total RNA 10x dilution

RNA Area: 101.5
 RNA Concentration: 76 ng/μl
 rRNA Ratio [28s / 18s]: 1.7
 RNA Integrity Number (RIN): 7.6 (B.02.08, Anomaly Threshold(s) manually adapted)
 Result Flagging Color:
 Result Flagging Label: RIN: 7.60

Fragment table for sample 6 : 6 Med18-36a total RNA 10x dilution

Name	Start Size [nt]	End Size [nt]	Area	% of total Area
18S	1,605	1,978	17.8	17.5
28S	1,997	3,431	29.4	29.0



Overall Results for sample 7 : 7 wt-0b total RNA 10x dilution

RNA Area: 135.2
 RNA Concentration: 101 ng/μl
 rRNA Ratio [28s / 18s]: 1.3
 RNA Integrity Number (RIN): 7.3 (B.02.08, Anomaly Threshold(s) manually adapted)
 Result Flagging Color:
 Result Flagging Label: RIN: 7.30

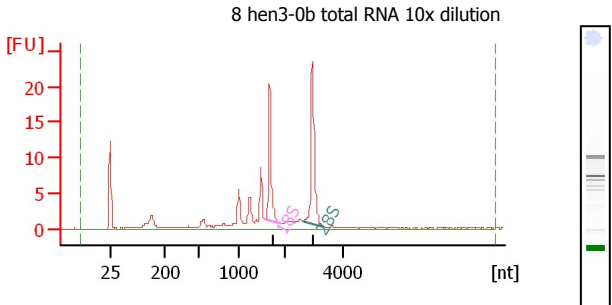
Fragment table for sample 7 : 7 wt-0b total RNA 10x dilution

Name	Start Size [nt]	End Size [nt]	Area	% of total Area
18S	1,590	1,872	23.6	17.4
28S	2,812	3,365	31.3	23.1

Assay Class: Eukaryote Total RNA Nano
 Data Path: D:\...Eukaryote Total RNA Nano_DE24802235_2012-06-12_15-08-07.xad

Created: 6/12/2012 3:08:07 PM
 Modified: 6/12/2012 3:40:20 PM

Electropherogram Summary Continued ...

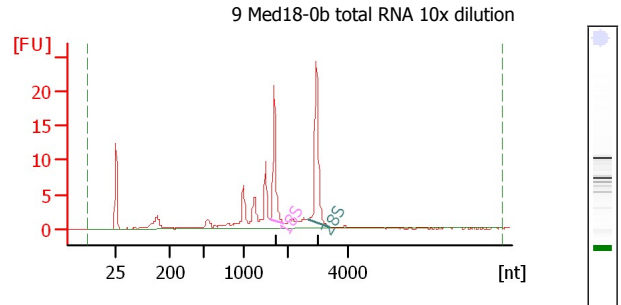


Overall Results for sample 8 : 8 hen3-0b total RNA 10x dilution

RNA Area: 97.2
 RNA Concentration: 72 ng/μl
 rRNA Ratio [28s / 18s]: 1.4
 RNA Integrity Number (RIN): 7.5 (B.02.08, Anomaly Threshold(s) manually adapted)
 Result Flagging Color:
 Result Flagging Label: RIN: 7.50

Fragment table for sample 8 : 8 hen3-0b total RNA 10x dilution

Name	Start Size [nt]	End Size [nt]	Area	% of total Area
18S	1,585	1,915	16.9	17.3
28S	2,657	3,412	24.1	24.8

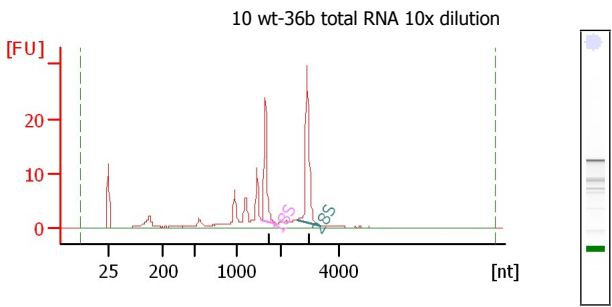


Overall Results for sample 9 : 9 Med18-0b total RNA 10x dilutio

RNA Area: 101.6
 RNA Concentration: 76 ng/μl
 rRNA Ratio [28s / 18s]: 1.4
 RNA Integrity Number (RIN): 7.4 (B.02.08, Anomaly Threshold(s) manually adapted)
 Result Flagging Color:
 Result Flagging Label: RIN: 7.40

Fragment table for sample 9 : 9 Med18-0b total RNA 10x dilution

Name	Start Size [nt]	End Size [nt]	Area	% of total Area
18S	1,579	1,912	17.7	17.4
28S	2,642	3,388	24.2	23.8

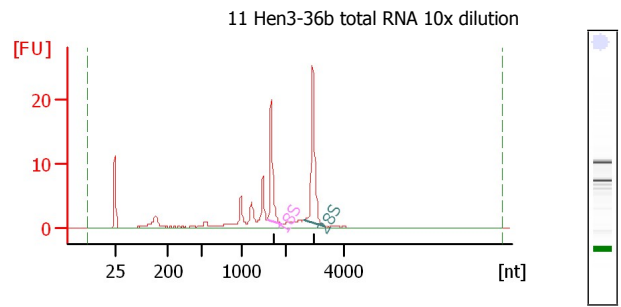


Overall Results for sample 10 : 10 wt-36b total RNA 10x dilutio

RNA Area: 115.8
 RNA Concentration: 86 ng/μl
 rRNA Ratio [28s / 18s]: 1.5
 RNA Integrity Number (RIN): 7.5 (B.02.08, Anomaly Threshold(s) manually adapted)
 Result Flagging Color:
 Result Flagging Label: RIN: 7.50

Fragment table for sample 10 : 10 wt-36b total RNA 10x dilution

Name	Start Size [nt]	End Size [nt]	Area	% of total Area
18S	1,575	1,910	19.9	17.1
28S	2,584	3,377	30.7	26.5



Overall Results for sample 11 : 11 Hen3-36b total RNA 10x diluti

RNA Area: 92.4
 RNA Concentration: 69 ng/μl
 rRNA Ratio [28s / 18s]: 1.5
 RNA Integrity Number (RIN): 7.7 (B.02.08, Anomaly Threshold(s) manually adapted)
 Result Flagging Color:
 Result Flagging Label: RIN: 7.70

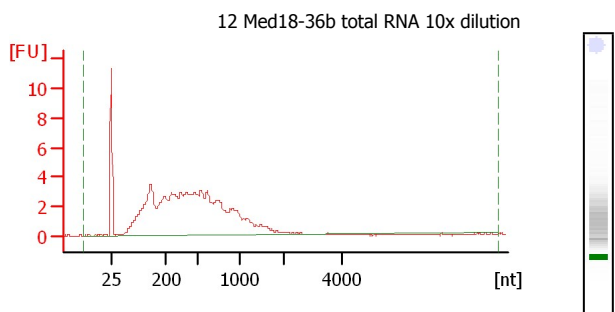
Fragment table for sample 11 : 11 Hen3-36b total RNA 10x diluti

Name	Start Size [nt]	End Size [nt]	Area	% of total Area
18S	1,564	1,908	16.5	17.9
28S	2,642	3,307	25.3	27.4

Assay Class: Eukaryote Total RNA Nano
Data Path: D:\...Eukaryote Total RNA Nano_DE24802235_2012-06-12_15-08-07.xad

Created: 6/12/2012 3:08:07 PM
Modified: 6/12/2012 3:40:20 PM

Electropherogram Summary Continued ...



Overall Results for sample 12 : 12 Med18-36b total RNA 10x dil

RNA Area: 104.9
RNA Concentration: 78 ng/μl
rRNA Ratio [28s / 18s]: 0.0
RNA Integrity Number (RIN): 2.2 (B.02.08, Anomaly Threshold(s) manually adapted)
Result Flagging Color:
Result Flagging Label: RIN: 2.20

Assay Class: Eukaryote Total RNA Nano
Data Path: D:\...Eukaryote Total RNA Nano_DE24802235_2012-06-12_15-08-07.xad

Created: 6/12/2012 3:08:07 PM
Modified: 6/12/2012 3:40:20 PM

Curves

Standard Curve

