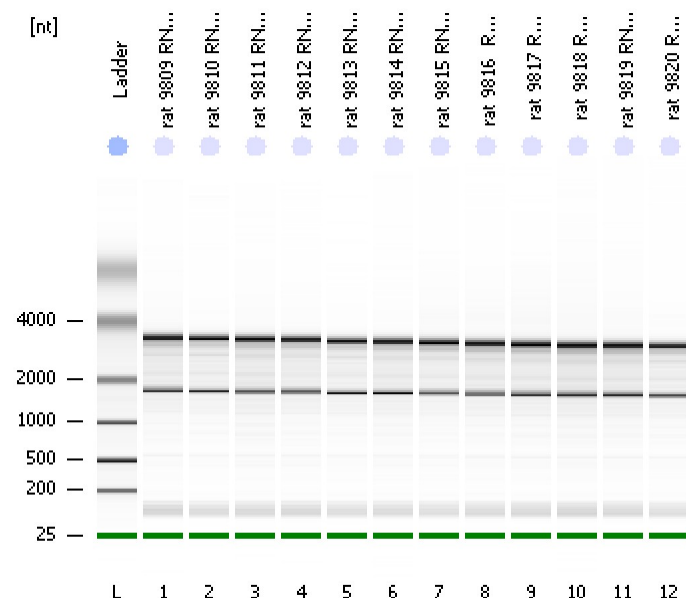


Assay Class: Eukaryote Total RNA Nano
Data Path: D:\...Eukaryote Total RNA Nano_DE24802235_2011-06-27_15-47-15.xad

Created: 6/27/2011 3:47:15 PM
Modified: 6/27/2011 4:32:47 PM

Electrophoresis File Run Summary



Instrument Information:

Instrument Name: Ann's baby

Firmware: C.01.069

Serial#: DE24802235

Type: G2938B

Assay Information:

Assay Origin Path: D:\Program Files\Agilent\2100 bioanalyzer\2100 expert\assays\RNA\Eukaryote Total RNA Nano Series II.xsy

Assay Class: Eukaryote Total RNA Nano

Version: 2.6

Assay Comments: Total RNA Analysis ng sensitivity (Eukaryote)

© Copyright 2003 - 2009 Agilent Technologies, Inc.

Chip Information:

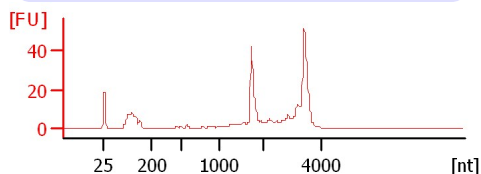
Chip Lot #:

Reagent Kit Lot #:

Chip Comments:

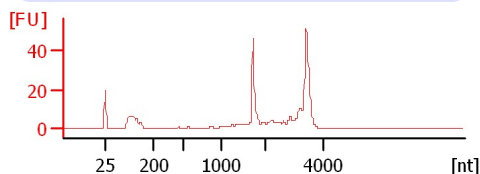
rat 9809 RNA as received

RIN: 8.90



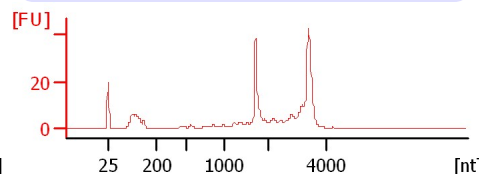
rat 9810 RNA as received

RIN: 8.60



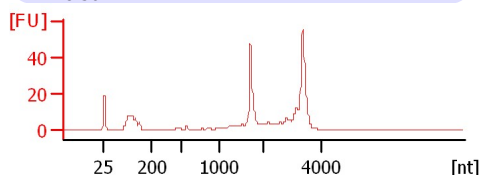
rat 9811 RNA as received

RIN: 8.70



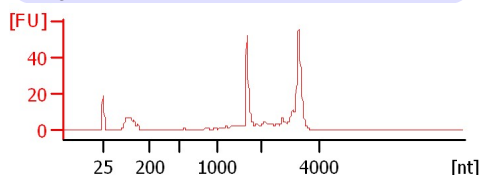
rat 9812 RNA as received

RIN: 8.50



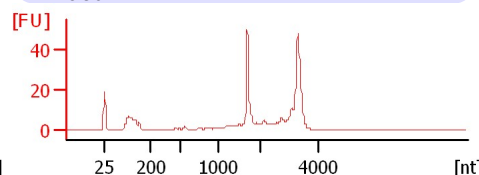
rat 9813 RNA as received

RIN: 9



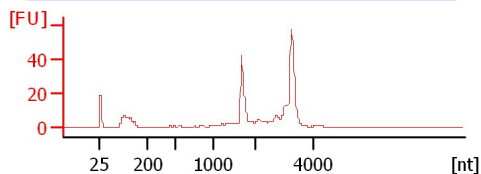
rat 9814 RNA as received

RIN: 8.90



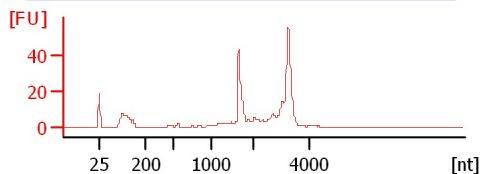
rat 9815 RNA as received

RIN: 9.10



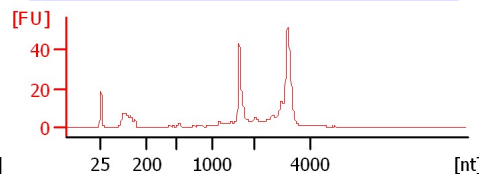
rat 9816 RNA as received

RIN: 8.90



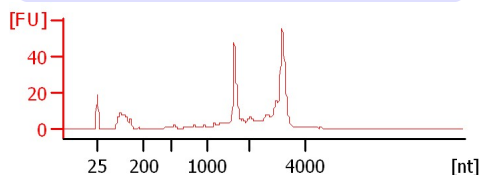
rat 9817 RNA as received

RIN: 8.90



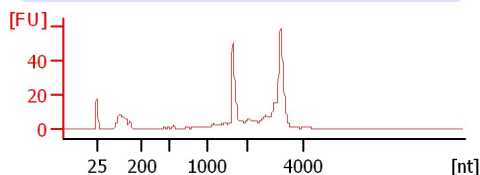
rat 9818 RNA as received

RIN: 8.70



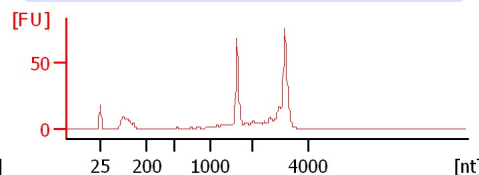
rat 9819 RNA as received

RIN: 8.80



rat 9820 RNA as received

RIN: 8.90



Assay Class: Eukaryote Total RNA Nano
Data Path: D:\...\Eukaryote Total RNA Nano_DE24802235_2011-06-27_15-47-15.xad

Created: 6/27/2011 3:47:15 PM
Modified: 6/27/2011 4:32:47 PM

Electrophoresis File Run Summary (Chip Summary)

Sample Name	Sample Comment	Status	Result Label	Result Color
rat 9809 RNA as		✓	RIN: 8.90	
rat 9810 RNA as		✓	RIN: 8.60	
rat 9811 RNA as		✓	RIN: 8.70	
rat 9812 RNA as		✓	RIN: 8.50	
rat 9813 RNA as		✓	RIN: 9	
rat 9814 RNA as		✓	RIN: 8.90	
rat 9815 RNA as		✓	RIN: 9.10	
rat 9816 RNA as received		✓	RIN: 8.90	
rat 9817 RNA as received		✓	RIN: 8.90	
rat 9818 RNA as received		✓	RIN: 8.70	
rat 9819 RNA as		✓	RIN: 8.80	
rat 9820 RNA as received		✓	RIN: 8.90	
Ladder		✓	All Other Samples	

Chip Lot #**Reagent Kit Lot #****Chip Comments :**

Assay Class: Eukaryote Total RNA Nano
Data Path: D:\...\Eukaryote Total RNA Nano_DE24802235_2011-06-27_15-47-15.xad

Created: 6/27/2011 3:47:15 PM
Modified: 6/27/2011 4:32:47 PM

Electrophoresis Assay Details

General Analysis Settings

Number of Available Sample and Ladder Wells (Max.) : 13
Minimum Visible Range [s] : 17
Maximum Visible Range [s] : 70
Start Analysis Time Range [s] : 19
End Analysis Time Range [s] : 69
Ladder Concentration [ng/ μ l] : 150
Lower Marker Concentration [ng/ μ l] : 0
Upper Marker Concentration [ng/ μ l] : 0
Used Lower Marker for Quantitation
Standard Curve Fit is Logarithmic
Show Data Aligned to Lower Marker

Integrator Settings

Integration Start Time [s] : 19
Integration End Time [s] : 69
Slope Threshold : 0.6
Height Threshold [FU] : 0.5
Area Threshold : 0.2
Width Threshold [s] : 0.5
Baseline Plateau [s] : 6

Filter Settings

Filter Width [s] : 0.5
Polynomial Order : 4

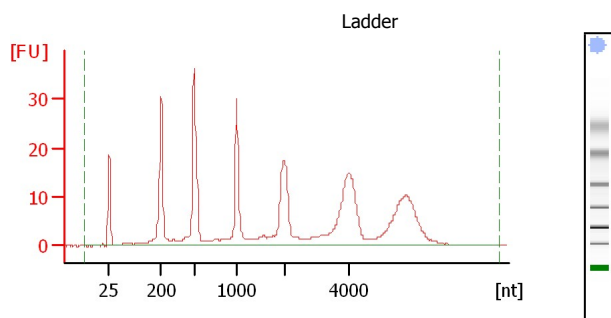
Ladder

Ladder Peak	Size
1	25
2	200
3	500
4	1000
5	2000
6	4000

Assay Class: Eukaryote Total RNA Nano
 Data Path: D:\...Eukaryote Total RNA Nano_DE24802235_2011-06-27_15-47-15.xad

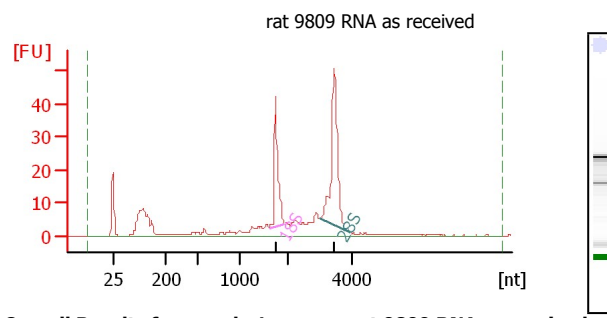
Created: 6/27/2011 3:47:15 PM
 Modified: 6/27/2011 4:32:47 PM

Electropherogram Summary



Overall Results for Ladder

RNA Area: 372.7
 RNA Concentration: 150 ng/μl
 Result Flagging Color:
 Result Flagging Label: All Other Samples

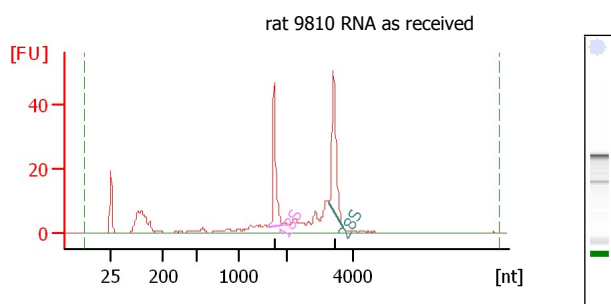


Overall Results for sample 1 : rat 9809 RNA as received

RNA Area: 302.5
 RNA Concentration: 122 ng/μl
 rRNA Ratio [28s / 18s]: 1.8
 RNA Integrity Number (RIN): 8.9 (B.02.08)
 Result Flagging Color:
 Result Flagging Label: RIN: 8.90

Fragment table for sample 1 : rat 9809 RNA as received

Name	Start Size [nt]	End Size [nt]	Area	% of total Area
18S	1,612	1,929	46.2	15.3
28S	3,011	3,892	82.2	27.2

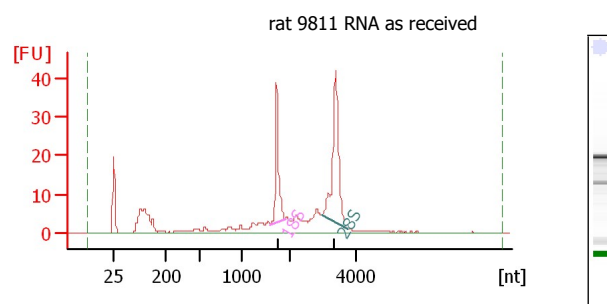


Overall Results for sample 2 : rat 9810 RNA as received

RNA Area: 252.8
 RNA Concentration: 102 ng/μl
 rRNA Ratio [28s / 18s]: 1.2
 RNA Integrity Number (RIN): 8.6 (B.02.08)
 Result Flagging Color:
 Result Flagging Label: RIN: 8.60

Fragment table for sample 2 : rat 9810 RNA as received

Name	Start Size [nt]	End Size [nt]	Area	% of total Area
18S	1,599	1,897	41.1	16.2
28S	3,290	3,702	51.1	20.2



Overall Results for sample 3 : rat 9811 RNA as received

RNA Area: 255.2
 RNA Concentration: 103 ng/μl
 rRNA Ratio [28s / 18s]: 1.9
 RNA Integrity Number (RIN): 8.7 (B.02.08)
 Result Flagging Color:
 Result Flagging Label: RIN: 8.70

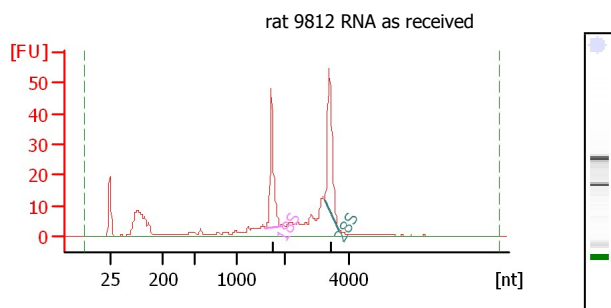
Fragment table for sample 3 : rat 9811 RNA as received

Name	Start Size [nt]	End Size [nt]	Area	% of total Area
18S	1,590	1,888	35.3	13.8
28S	2,943	3,780	65.9	25.8

Assay Class: Eukaryote Total RNA Nano
 Data Path: D:\...Eukaryote Total RNA Nano_DE24802235_2011-06-27_15-47-15.xad

Created: 6/27/2011 3:47:15 PM
 Modified: 6/27/2011 4:32:47 PM

Electropherogram Summary Continued ...

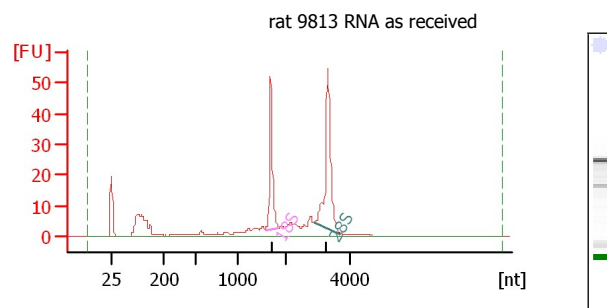


Overall Results for sample 4 : rat 9812 RNA as received

RNA Area: 310.5
 RNA Concentration: 125 ng/μl
 rRNA Ratio [28s / 18s]: 1.2
 RNA Integrity Number (RIN): 8.5 (B.02.08)
 Result Flagging Color:
 Result Flagging Label: RIN: 8.50

Fragment table for sample 4 : rat 9812 RNA as received

Name	Start Size [nt]	End Size [nt]	Area	% of total Area
18S	1,585	1,894	49.8	16.0
28S	3,231	3,685	58.4	18.8

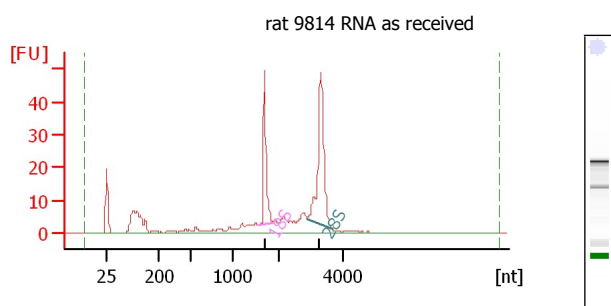


Overall Results for sample 5 : rat 9813 RNA as received

RNA Area: 270.4
 RNA Concentration: 109 ng/μl
 rRNA Ratio [28s / 18s]: 1.7
 RNA Integrity Number (RIN): 9 (B.02.08)
 Result Flagging Color:
 Result Flagging Label: RIN: 9

Fragment table for sample 5 : rat 9813 RNA as received

Name	Start Size [nt]	End Size [nt]	Area	% of total Area
18S	1,563	1,856	46.2	17.1
28S	2,898	3,707	78.5	29.0

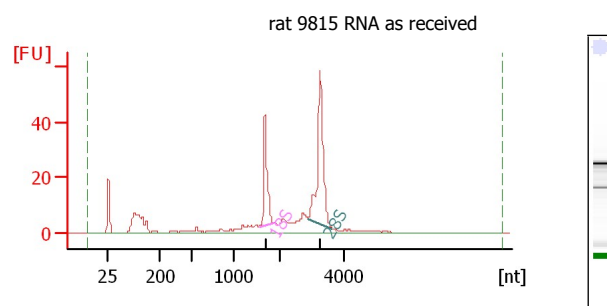


Overall Results for sample 6 : rat 9814 RNA as received

RNA Area: 269.2
 RNA Concentration: 108 ng/μl
 rRNA Ratio [28s / 18s]: 1.8
 RNA Integrity Number (RIN): 8.9 (B.02.08)
 Result Flagging Color:
 Result Flagging Label: RIN: 8.90

Fragment table for sample 6 : rat 9814 RNA as received

Name	Start Size [nt]	End Size [nt]	Area	% of total Area
18S	1,565	1,852	43.5	16.1
28S	2,876	3,679	78.3	29.1



Overall Results for sample 7 : rat 9815 RNA as received

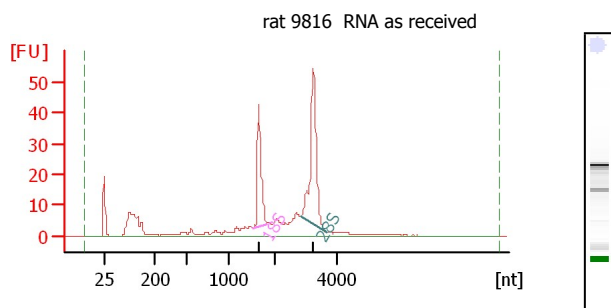
RNA Area: 311.9
 RNA Concentration: 126 ng/μl
 rRNA Ratio [28s / 18s]: 1.9
 RNA Integrity Number (RIN): 9.1 (B.02.08)
 Result Flagging Color:
 Result Flagging Label: RIN: 9.10

Fragment table for sample 7 : rat 9815 RNA as received

Name	Start Size [nt]	End Size [nt]	Area	% of total Area
18S	1,551	1,858	47.2	15.1
28S	2,879	3,674	91.1	29.2

Assay Class: Eukaryote Total RNA Nano
Data Path: D:\...Eukaryote Total RNA Nano_DE24802235_2011-06-27_15-47-15.xad

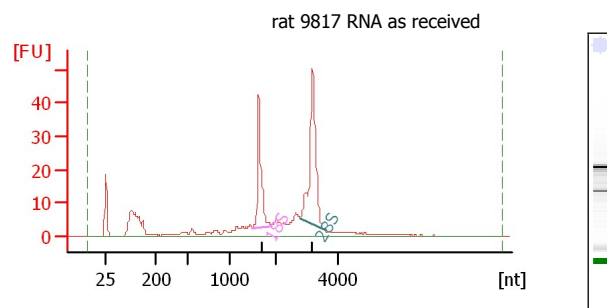
Created: 6/27/2011 3:47:15 PM
Modified: 6/27/2011 4:32:47 PM

Electropherogram Summary Continued ...**Overall Results for sample 8 : rat 9816 RNA as received**

RNA Area: 320.1
RNA Concentration: 129 ng/μl
rRNA Ratio [28s / 18s]: 1.9
RNA Integrity Number (RIN): 8.9 (B.02.08)
Result Flagging Color:
Result Flagging Label: RIN: 8.90

Fragment table for sample 8 : rat 9816 RNA as received

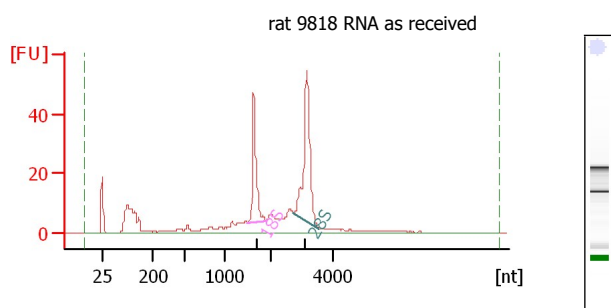
Name	Start Size [nt]	End Size [nt]	Area	% of total Area
18S	1,537	1,837	47.2	14.7
28S	2,829	3,656	87.8	27.4

**Overall Results for sample 9 : rat 9817 RNA as received**

RNA Area: 310.1
RNA Concentration: 125 ng/μl
rRNA Ratio [28s / 18s]: 1.7
RNA Integrity Number (RIN): 8.9 (B.02.08)
Result Flagging Color:
Result Flagging Label: RIN: 8.90

Fragment table for sample 9 : rat 9817 RNA as received

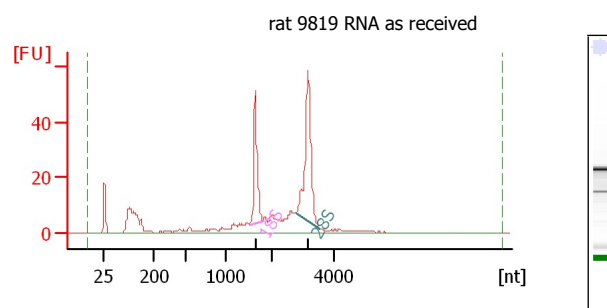
Name	Start Size [nt]	End Size [nt]	Area	% of total Area
18S	1,514	1,926	48.4	15.6
28S	2,805	3,638	83.3	26.9

**Overall Results for sample 10 : rat 9818 RNA as received**

RNA Area: 363.1
RNA Concentration: 146 ng/μl
rRNA Ratio [28s / 18s]: 1.7
RNA Integrity Number (RIN): 8.7 (B.02.08)
Result Flagging Color:
Result Flagging Label: RIN: 8.70

Fragment table for sample 10 : rat 9818 RNA as received

Name	Start Size [nt]	End Size [nt]	Area	% of total Area
18S	1,501	1,906	55.3	15.2
28S	2,739	3,576	93.9	25.9

**Overall Results for sample 11 : rat 9819 RNA as received**

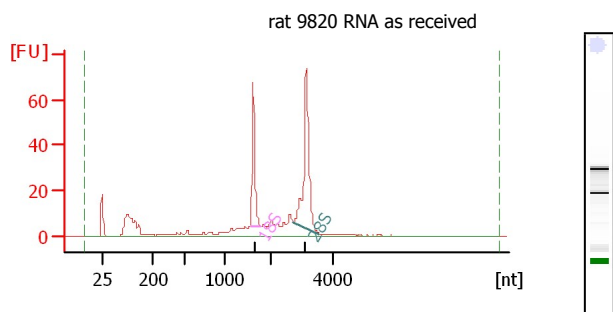
RNA Area: 361.1
RNA Concentration: 145 ng/μl
rRNA Ratio [28s / 18s]: 1.8
RNA Integrity Number (RIN): 8.8 (B.02.08)
Result Flagging Color:
Result Flagging Label: RIN: 8.80

Fragment table for sample 11 : rat 9819 RNA as received

Name	Start Size [nt]	End Size [nt]	Area	% of total Area
18S	1,506	1,802	53.7	14.9
28S	2,768	3,554	98.0	27.2

Assay Class: Eukaryote Total RNA Nano
Data Path: D:\...Eukaryote Total RNA Nano_DE24802235_2011-06-27_15-47-15.xad

Created: 6/27/2011 3:47:15 PM
Modified: 6/27/2011 4:32:47 PM

Electropherogram Summary Continued ...**Overall Results for sample 12 : rat 9820 RNA as received**

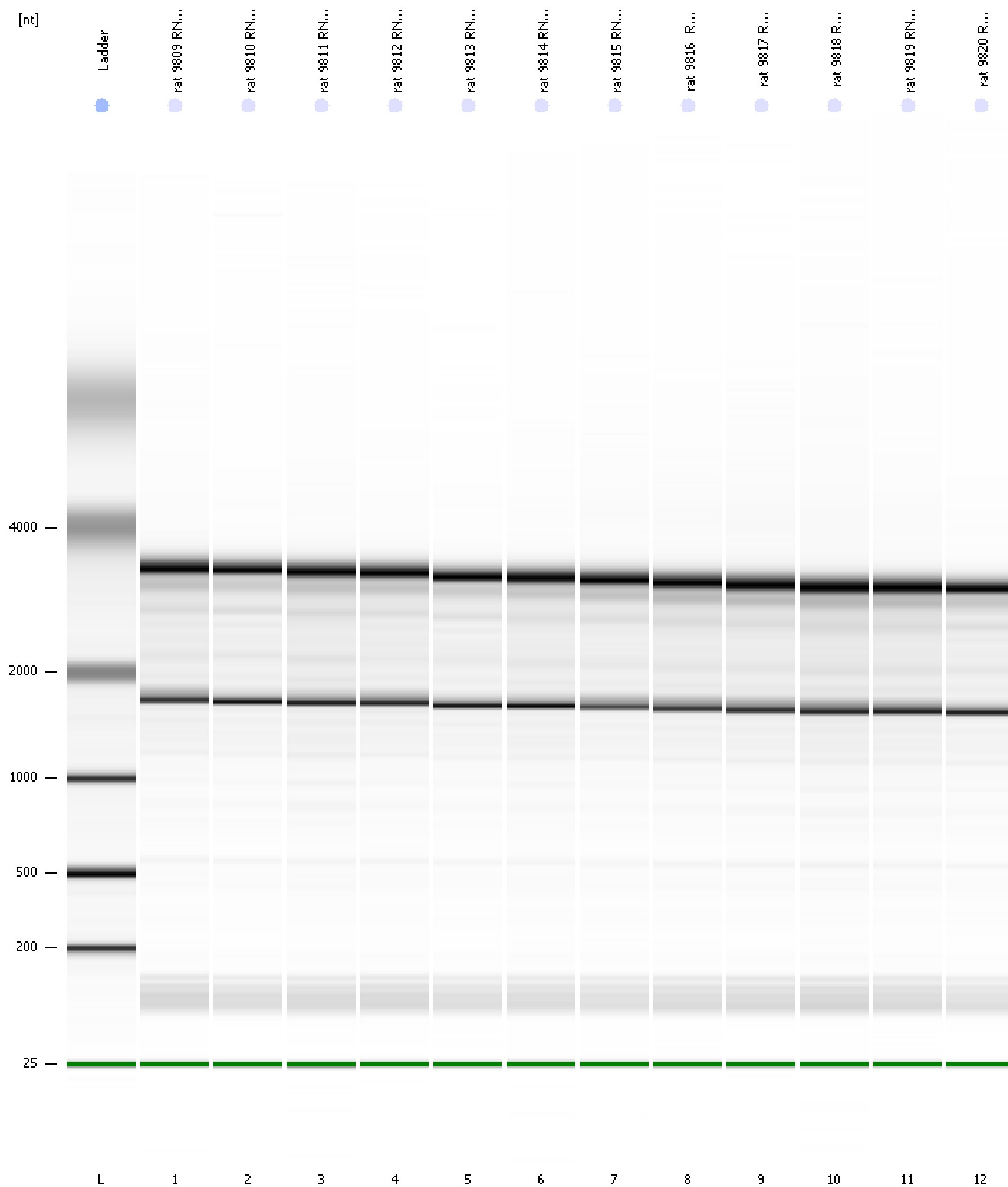
RNA Area: 371.3
RNA Concentration: 149 ng/μl
rRNA Ratio [28s / 18s]: 1.9
RNA Integrity Number (RIN): 8.9 (B.02.08)
Result Flagging Color:
Result Flagging Label: RIN: 8.90

Fragment table for sample 12 : rat 9820 RNA as received

Name	Start Size [nt]	End Size [nt]	Area	% of total Area
18S	1,556	1,786	58.3	15.7
28S	2,753	3,576	108.2	29.1

Assay Class: Eukaryote Total RNA Nano
Data Path: D:\...Eukaryote Total RNA Nano_DE24802235_2011-06-27_15-47-15.xad

Created: 6/27/2011 3:47:15 PM
Modified: 6/27/2011 4:32:47 PM

Gel Image

Assay Class: Eukaryote Total RNA Nano
Data Path: D:\...Eukaryote Total RNA Nano_DE24802235_2011-06-27_15-47-15.xad

Created: 6/27/2011 3:47:15 PM
Modified: 6/27/2011 4:32:47 PM

Curves

Standard Curve

