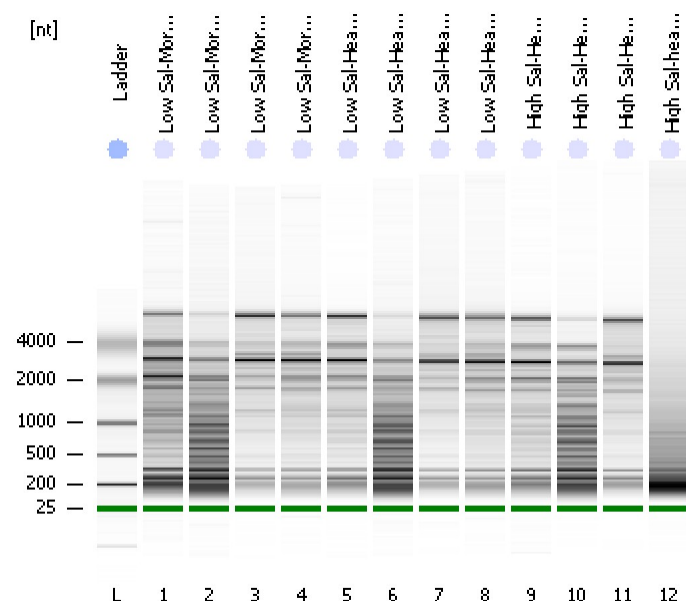


Assay Class: Eukaryote Total RNA Nano  
Data Path: D:\...Eukaryote Total RNA Nano\_DE24802235\_2010-08-06\_17-20-23.xad

Created: 8/6/2010 5:20:23 PM  
Modified: 8/6/2010 5:44:34 PM

**Electrophoresis File Run Summary**Instrument Information:

Instrument Name: Ann's baby

Firmware: C.01.069

Serial#: DE24802235

Type: G2938B

Assay Information:

Assay Origin Path: D:\Program Files\Agilent\2100 bioanalyzer\2100 expert\assays\RNA\Eukaryote Total RNA Nano Series II.xsy

Assay Class: Eukaryote Total RNA Nano

Version: 2.6

Assay Comments: Total RNA Analysis ng sensitivity (Eukaryote)

© Copyright 2003 - 2009 Agilent Technologies, Inc.

Chip Information:

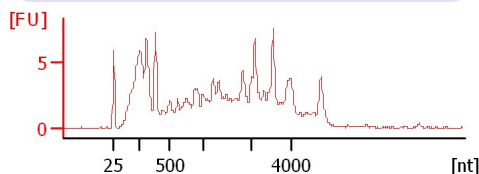
Chip Lot #:

Reagent Kit Lot #:

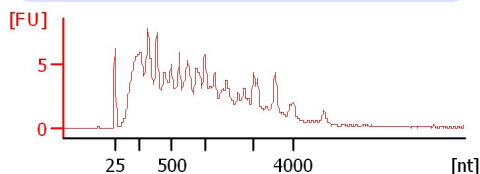
Chip Comments:

**Low Sal-Moribund-liver RNA received**

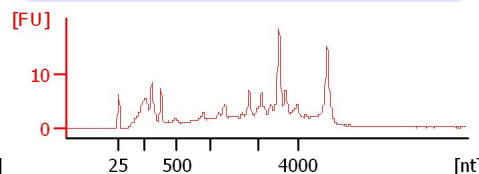
RIN: 4.40

**Low Sal-Moribund-intestines RNA received**

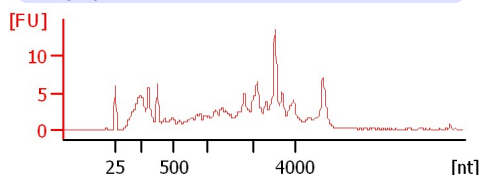
RIN: 3.10

**Low Sal-Moribund-kidney RNA received**

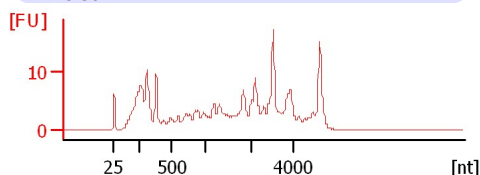
RIN: 6.10

**Low Sal-Moribund-gill RNA received**

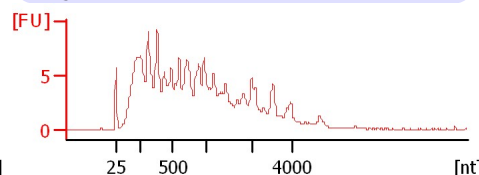
RIN: 5.20

**Low Sal-Healthy-liver RNA received**

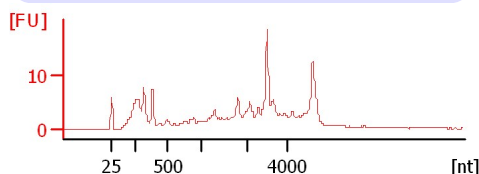
RIN: 5.50

**Low Sal-Healthy-intestines RNA received**

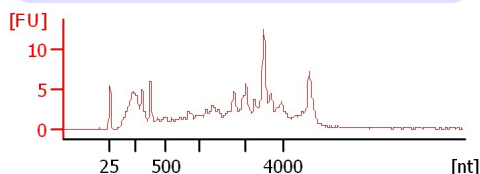
RIN: 3

**Low Sal-Healthy-kidney RNA received**

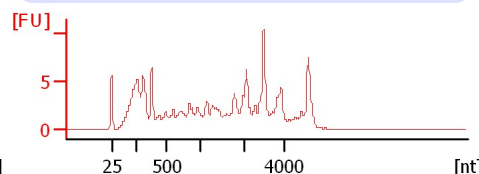
RIN: 6.20

**Low Sal-Healthy-gill RNA received**

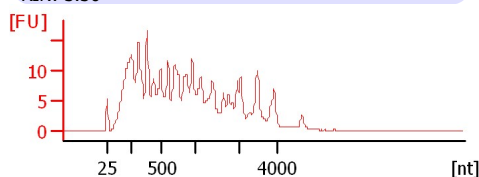
RIN: 5.60

**High Sal-Healthy-liver RNA received**

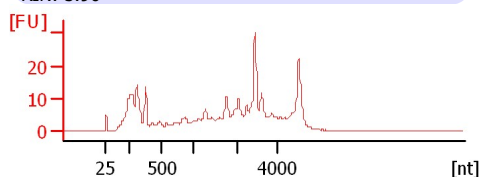
RIN: 5.50

**High Sal-Healthy-intestines RNA received**

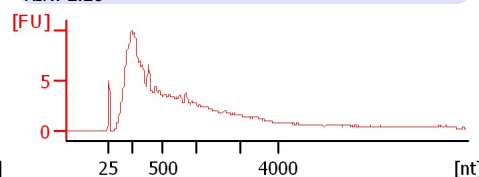
RIN: 3.30

**High Sal-Healthy-kidney RNA received**

RIN: 5.90

**High Sal-healthy-gill RNA received**

RIN: 2.20



Assay Class: Eukaryote Total RNA Nano  
Data Path: D:\...Eukaryote Total RNA Nano\_DE24802235\_2010-08-06\_17-20-23.xad

Created: 8/6/2010 5:20:23 PM  
Modified: 8/6/2010 5:44:34 PM

**Electrophoresis File Run Summary (Chip Summary)**

Sample Name	Sample Comment	Status	Result Label	Result Color
Low Sal-Moribund-liver RNA received		✓	RIN: 4.40	
Low Sal-Moribund-intestines RNA received		✓	RIN: 3.10	
Low Sal-Moribund-kidney RNA received		✓	RIN: 6.10	
Low Sal-Moribund-gill RNA received		✓	RIN: 5.20	
Low Sal-Healthy-liver RNA received		✓	RIN: 5.50	
Low Sal-Healthy-intestines RNA received		✓	RIN: 3	
Low Sal-Healthy-kidney RNA received		✓	RIN: 6.20	
Low Sal-Healthy-gill RNA received		✓	RIN: 5.60	
High Sal-Healthy-liver RNA received		✓	RIN: 5.50	
High Sal-Healthy-intestines RNA received		✓	RIN: 3.30	
High Sal-Healthy-kidney RNA received		✓	RIN: 5.90	
High Sal-healthy-gill RNA received		✓	RIN: 2.20	

**Chip Lot #****Reagent Kit Lot #****Chip Comments :**

Assay Class: Eukaryote Total RNA Nano  
Data Path: D:\...\Eukaryote Total RNA Nano\_DE24802235\_2010-08-06\_17-20-23.xad

Created: 8/6/2010 5:20:23 PM  
Modified: 8/6/2010 5:44:34 PM

## Electrophoresis Assay Details

### General Analysis Settings

Number of Available Sample and Ladder Wells (Max.) : 13

Minimum Visible Range [s] : 17

Maximum Visible Range [s] : 70

Start Analysis Time Range [s] : 19

End Analysis Time Range [s] : 69

Ladder Concentration [ng/μl] : 150

Lower Marker Concentration [ng/μl] : 0

Upper Marker Concentration [ng/μl] : 0

Used Lower Marker for Quantitation

Standard Curve Fit is Logarithmic

Show Data Aligned to Lower Marker

### Integrator Settings

Integration Start Time [s] : 19

Integration End Time [s] : 69

Slope Threshold : 0.6

Height Threshold [FU] : 0.5

Area Threshold : 0.2

Width Threshold [s] : 0.5

Baseline Plateau [s] : 6

### Filter Settings

Filter Width [s] : 0.5

Polynomial Order : 4

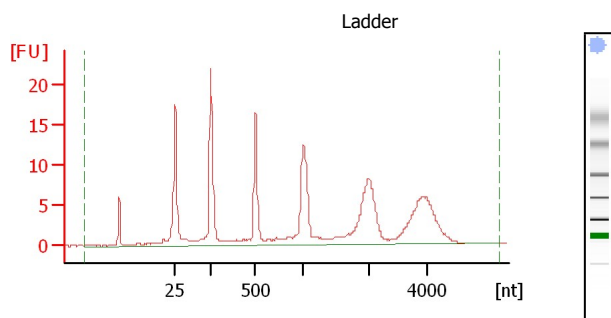
### Ladder

Ladder Peak	Size
1	25
2	200
3	500
4	1000
5	2000
6	4000

Assay Class: Eukaryote Total RNA Nano  
 Data Path: D:\...Eukaryote Total RNA Nano\_DE24802235\_2010-08-06\_17-20-23.xad

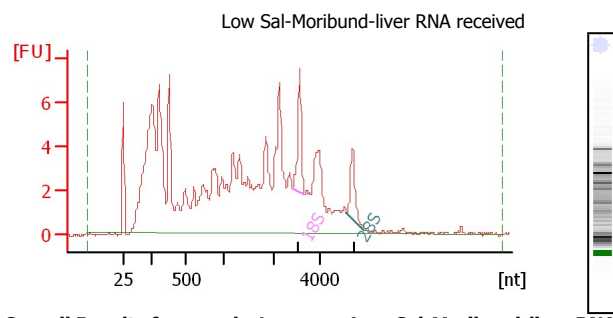
Created: 8/6/2010 5:20:23 PM  
 Modified: 8/6/2010 5:44:34 PM

### Electropherogram Summary



#### Overall Results for Ladder

RNA Area: 181.2  
 RNA Concentration: 150 ng/μl  
 Result Flagging Color:    
 Result Flagging Label: All Other Samples

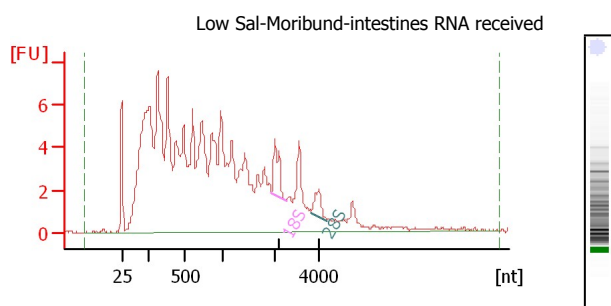


#### Overall Results for sample 1 : Low Sal-Moribund-liver RNA received

RNA Area: 187.1  
 RNA Concentration: 155 ng/μl  
 rRNA Ratio [28s / 18s]: 0.7  
 RNA Integrity Number (RIN): 4.4 (B.02.07)  
 Result Flagging Color:    
 Result Flagging Label: RIN: 4.40

#### Fragment table for sample 1 : Low Sal-Moribund-liver RNA received

Name	Start Size [nt]	End Size [nt]	Area	% of total Area
18S	2,806	3,347	6.1	3.3
28S	5,194	5,978	4.0	2.2

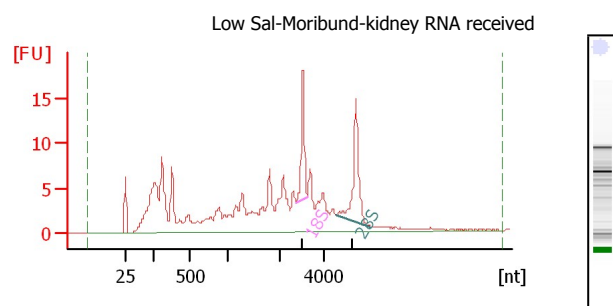


#### Overall Results for sample 2 : Low Sal-Moribund-intestines RNA received

RNA Area: 231.2  
 RNA Concentration: 191 ng/μl  
 rRNA Ratio [28s / 18s]: 0.5  
 RNA Integrity Number (RIN): 3.1 (B.02.07)  
 Result Flagging Color:    
 Result Flagging Label: RIN: 3.10

#### Fragment table for sample 2 : Low Sal-Moribund-intestines RNA received

Name	Start Size [nt]	End Size [nt]	Area	% of total Area
18S	1,936	2,540	4.6	2.0
28S	3,613	4,316	2.3	1.0



#### Overall Results for sample 3 : Low Sal-Moribund-kidney RNA received

RNA Area: 232.8  
 RNA Concentration: 193 ng/μl  
 rRNA Ratio [28s / 18s]: 1.4  
 RNA Integrity Number (RIN): 6.1 (B.02.07)  
 Result Flagging Color:    
 Result Flagging Label: RIN: 6.10

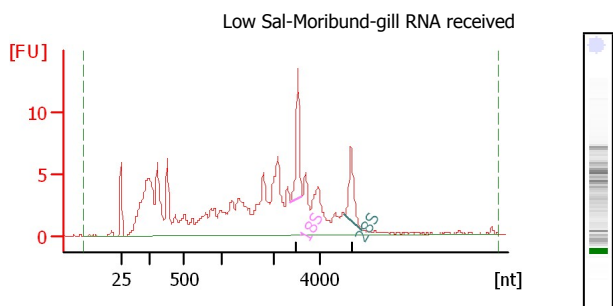
#### Fragment table for sample 3 : Low Sal-Moribund-kidney RNA received

Name	Start Size [nt]	End Size [nt]	Area	% of total Area
18S	2,749	3,247	13.9	6.0
28S	4,499	6,010	19.9	8.6

Assay Class: Eukaryote Total RNA Nano  
 Data Path: D:\...Eukaryote Total RNA Nano\_DE24802235\_2010-08-06\_17-20-23.xad

Created: 8/6/2010 5:20:23 PM  
 Modified: 8/6/2010 5:44:34 PM

### Electropherogram Summary Continued ...

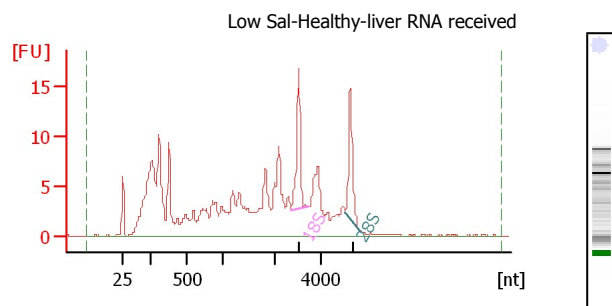


#### Overall Results for sample 4 : Low Sal-Moribund-gill RNA receive

RNA Area: 194.0  
 RNA Concentration: 161 ng/μl  
 rRNA Ratio [28s / 18s]: 0.7  
 RNA Integrity Number (RIN): 5.2 (B.02.07)  
 Result Flagging Color:    
 Result Flagging Label: RIN: 5.20

#### Fragment table for sample 4 : Low Sal-Moribund-gill RNA receive

Name	Start Size [nt]	End Size [nt]	Area	% of total Area
18S	2,728	3,245	10.8	5.6
28S	5,091	5,866	7.6	3.9

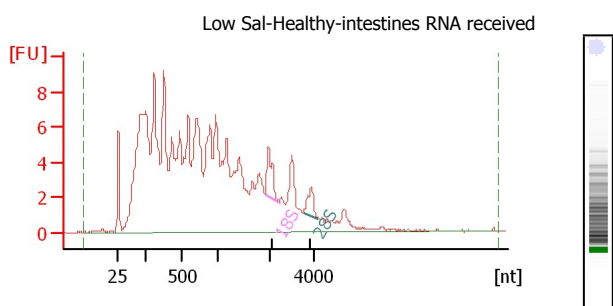


#### Overall Results for sample 5 : Low Sal-Healthy-liver RNA receive

RNA Area: 264.1  
 RNA Concentration: 219 ng/μl  
 rRNA Ratio [28s / 18s]: 0.9  
 RNA Integrity Number (RIN): 5.5 (B.02.07)  
 Result Flagging Color:    
 Result Flagging Label: RIN: 5.50

#### Fragment table for sample 5 : Low Sal-Healthy-liver RNA receive

Name	Start Size [nt]	End Size [nt]	Area	% of total Area
18S	2,700	3,462	15.9	6.0
28S	5,097	5,784	13.5	5.1

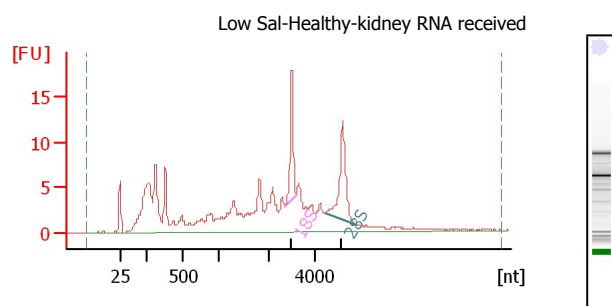


#### Overall Results for sample 6 : Low Sal-Healthy-intestines RNA r

RNA Area: 271.1  
 RNA Concentration: 224 ng/μl  
 rRNA Ratio [28s / 18s]: 0.6  
 RNA Integrity Number (RIN): 3 (B.02.07)  
 Result Flagging Color:    
 Result Flagging Label: RIN:3

#### Fragment table for sample 6 : Low Sal-Healthy-intestines RNA re

Name	Start Size [nt]	End Size [nt]	Area	% of total Area
18S	1,924	2,464	4.8	1.8
28S	3,531	4,225	2.8	1.0



#### Overall Results for sample 7 : Low Sal-Healthy-kidney RNA recei

RNA Area: 209.4  
 RNA Concentration: 173 ng/μl  
 rRNA Ratio [28s / 18s]: 1.4  
 RNA Integrity Number (RIN): 6.2 (B.02.07)  
 Result Flagging Color:    
 Result Flagging Label: RIN: 6.20

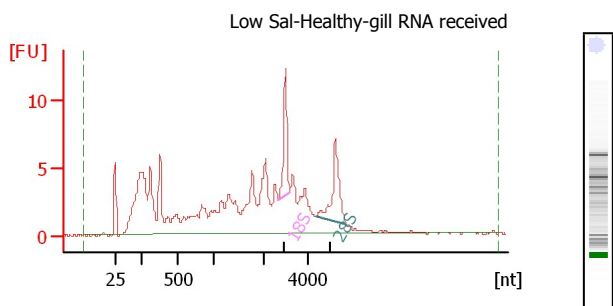
#### Fragment table for sample 7 : Low Sal-Healthy-kidney RNA recei

Name	Start Size [nt]	End Size [nt]	Area	% of total Area
18S	2,698	3,188	13.7	6.5
28S	4,433	5,922	19.0	9.1

Assay Class: Eukaryote Total RNA Nano  
 Data Path: D:\...Eukaryote Total RNA Nano\_DE24802235\_2010-08-06\_17-20-23.xad

Created: 8/6/2010 5:20:23 PM  
 Modified: 8/6/2010 5:44:34 PM

### Electropherogram Summary Continued ...

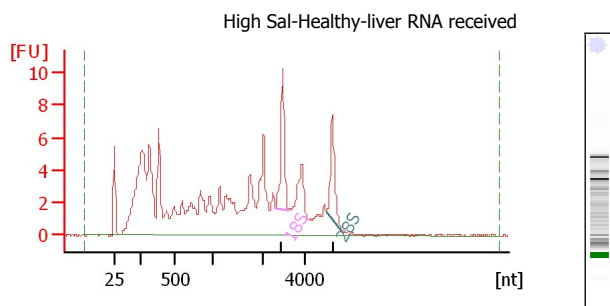


#### Overall Results for sample 8 : Low Sal-Healthy-gill RNA received

RNA Area: 183.6  
 RNA Concentration: 152 ng/μl  
 rRNA Ratio [28s / 18s]: 1.2  
 RNA Integrity Number (RIN): 5.6 (B.02.07)  
 Result Flagging Color:    
 Result Flagging Label: RIN: 5.60

#### Fragment table for sample 8 : Low Sal-Healthy-gill RNA received

Name	Start Size [nt]	End Size [nt]	Area	% of total Area
18S	2,667	3,180	9.6	5.2
28S	4,359	5,728	11.7	6.4

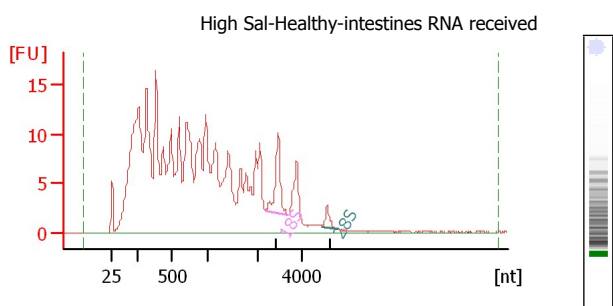


#### Overall Results for sample 9 : High Sal-Healthy-liver RNA received

RNA Area: 172.4  
 RNA Concentration: 143 ng/μl  
 rRNA Ratio [28s / 18s]: 0.8  
 RNA Integrity Number (RIN): 5.5 (B.02.07)  
 Result Flagging Color:    
 Result Flagging Label: RIN: 5.50

#### Fragment table for sample 9 : High Sal-Healthy-liver RNA received

Name	Start Size [nt]	End Size [nt]	Area	% of total Area
18S	2,635	3,210	9.8	5.7
28S	4,956	5,627	7.5	4.4

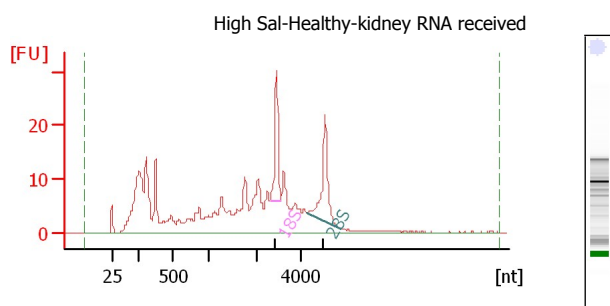


#### Overall Results for sample 10 : High Sal-Healthy-intestines RNA received

RNA Area: 452.9  
 RNA Concentration: 375 ng/μl  
 rRNA Ratio [28s / 18s]: 0.2  
 RNA Integrity Number (RIN): 3.3 (B.02.07)  
 Result Flagging Color:    
 Result Flagging Label: RIN: 3.30

#### Fragment table for sample 10 : High Sal-Healthy-intestines RNA received

Name	Start Size [nt]	End Size [nt]	Area	% of total Area
18S	2,370	3,396	13.4	3.0
28S	4,944	5,659	2.6	0.6



#### Overall Results for sample 11 : High Sal-Healthy-kidney RNA received

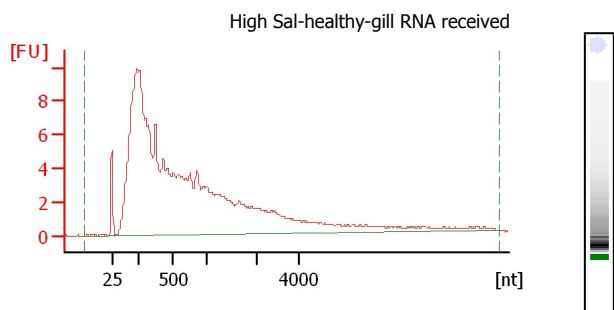
RNA Area: 393.1  
 RNA Concentration: 325 ng/μl  
 rRNA Ratio [28s / 18s]: 1.3  
 RNA Integrity Number (RIN): 5.9 (B.02.07)  
 Result Flagging Color:    
 Result Flagging Label: RIN: 5.90

#### Fragment table for sample 11 : High Sal-Healthy-kidney RNA received

Name	Start Size [nt]	End Size [nt]	Area	% of total Area
18S	2,576	3,082	24.9	6.3
28S	4,325	5,841	32.0	8.1

Assay Class: Eukaryote Total RNA Nano  
Data Path: D:\...Eukaryote Total RNA Nano\_DE24802235\_2010-08-06\_17-20-23.xad

Created: 8/6/2010 5:20:23 PM  
Modified: 8/6/2010 5:44:34 PM

**Electropherogram Summary Continued ...****Overall Results for sample 12 : High Sal-healthy-gill RNA receiv**

RNA Area: 228.9  
RNA Concentration: 189 ng/μl  
rRNA Ratio [28s / 18s]: 0.0  
RNA Integrity Number (RIN): 2.2 (B.02.07)  
Result Flagging Color:    
Result Flagging Label: RIN: 2.20

Assay Class: Eukaryote Total RNA Nano  
Data Path: D:\...Eukaryote Total RNA Nano\_DE24802235\_2010-08-06\_17-20-23.xad

Created: 8/6/2010 5:20:23 PM  
Modified: 8/6/2010 5:44:34 PM

**Gel Image**