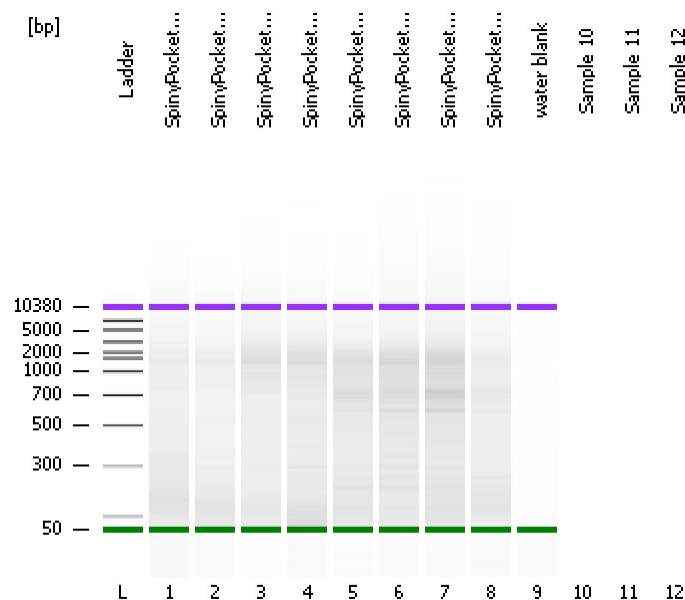


Assay Class: DNA 7500  
Data Path: D:\...-20\2100 expert\_DNA 7500\_DE24802235\_2010-09-20\_16-34-29.xad

Created: 9/20/2010 4:34:30 PM  
Modified: 9/20/2010 5:24:55 PM

### Electrophoresis File Run Summary



#### Instrument Information:

Instrument Name: Ann's baby  
Serial#: DE24802235  
Firmware: C.01.069  
Type: G2938B

#### Assay Information:

Assay Origin Path: D:\Program Files\Agilent\2100 bioanalyzer\2100 expert\assays\dsDNA\DNA 7500 Series II.xsy

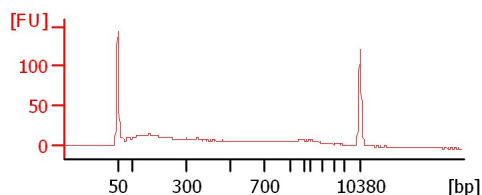
Assay Class: DNA 7500  
Version: 2.3  
Assay Comments: DNA Analysis 100 -7500 bp

© Copyright 2003-2009 Agilent Technologies, Inc.

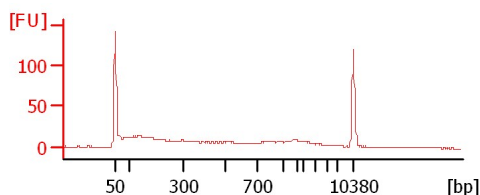
#### Chip Information:

Chip Lot #:  
Reagent Kit Lot #:  
Chip Comments:

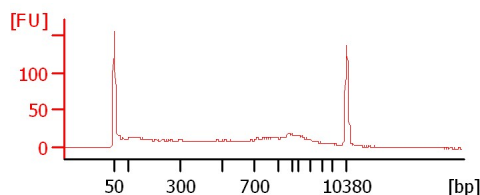
SpinyPocketMouse E100K cDNA received



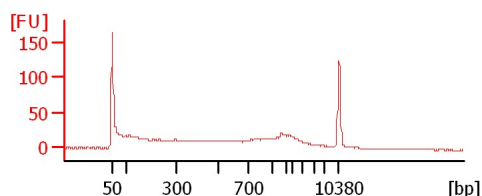
SpinyPocketMouse E101K cDNA received



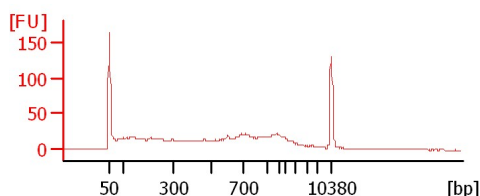
SpinyPocketMouse E102K cDNA received



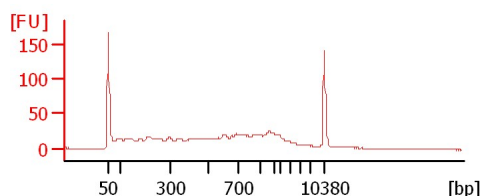
SpinyPocketMouse E103K cDNA received



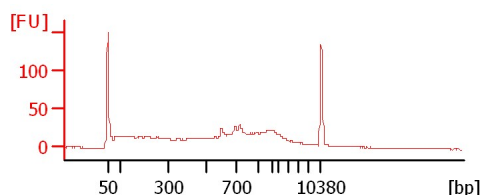
SpinyPocketMouse E100S cDNA received



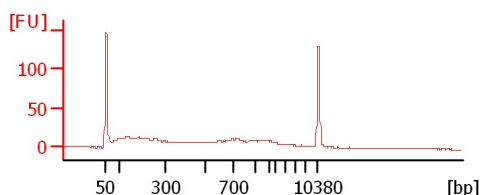
SpinyPocketMouse E101S cDNA received



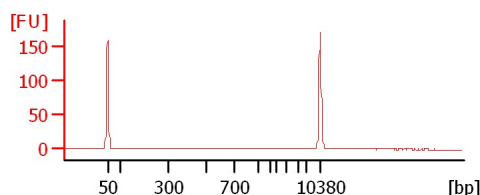
SpinyPocketMouse E102S cDNA received



SpinyPocketMouse E103S cDNA received



water blank



Assay Class: DNA 7500  
Data Path: D:\...-20\2100 expert\_DNA 7500\_DE24802235\_2010-09-20\_16-34-29.xad

Created: 9/20/2010 4:34:30 PM  
Modified: 9/20/2010 5:24:55 PM

**Electrophoresis File Run Summary (Chip Summary)**

Sample Name	Sample Comment	Rest. Digest	Status	Observation	Result Label	Result Color
SpinyPocketMouse E100K cDNA received		<input type="checkbox"/>	✓			
SpinyPocketMouse E101K cDNA received		<input type="checkbox"/>	✓			
SpinyPocketMouse E102K cDNA received		<input type="checkbox"/>	✓			
SpinyPocketMouse E103K cDNA received		<input type="checkbox"/>	✓			
SpinyPocketMouse E100S cDNA received		<input type="checkbox"/>	✓			
SpinyPocketMouse E101S cDNA received		<input type="checkbox"/>	✓			
SpinyPocketMouse E102S cDNA received		<input type="checkbox"/>	✓			
SpinyPocketMouse E103S cDNA received		<input type="checkbox"/>	✓			
water blank		<input type="checkbox"/>	✓			
Sample 10		<input type="checkbox"/>				
Sample 11		<input type="checkbox"/>				
Sample 12		<input type="checkbox"/>				

**Chip Lot #****Reagent Kit Lot #****Chip Comments :**

Assay Class: DNA 7500  
Data Path: D:\...-20\2100 expert\_DNA 7500\_DE24802235\_2010-09-20\_16-34-29.xad

Created: 9/20/2010 4:34:30 PM  
Modified: 9/20/2010 5:24:55 PM

## Electrophoresis Assay Details

### General Analysis Settings

Number of Available Sample and Ladder Wells (Max.) : 13  
Minimum Visible Range [s] : 20  
Maximum Visible Range [s] : 94  
Start Analysis Time Range [s] : 20  
End Analysis Time Range [s] : 93.95  
Ladder Concentration [ng/μl] : 40  
Uses Standard Area for Ladder Fragments  
Lower Marker Concentration [ng/μl] : 8.3  
Upper Marker Concentration [ng/μl] : 4.2  
Used Upper Marker for Quantitation  
Standard Curve Fit is Point to Point  
Show Data Aligned to Lower and Upper Marker

### Integrator Settings

Integration Start Time [s] : 20  
Integration End Time [s] : 93.95  
Slope Threshold : 0.8  
Height Threshold [FU] : 20  
Area Threshold : 0.1  
Width Threshold [s] : 0.5  
Baseline Plateau [s] : 0.5

### Filter Settings

Filter Width [s] : 0.5  
Polynomial Order : 4

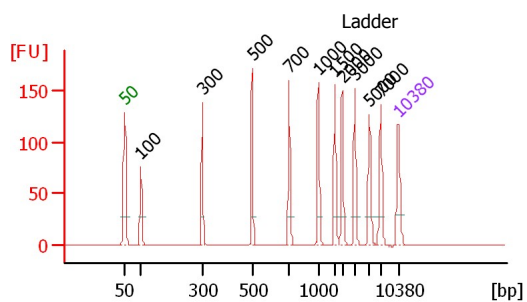
### Ladder

Ladder Peak	Size	Area
1	50	120
2	100	47
3	300	63
4	500	81
5	700	85
6	1000	93
7	1500	101
8	2000	101
9	3000	106
10	5000	108
11	7000	109
12	10380	107

Assay Class: DNA 7500  
 Data Path: D:\...-20\2100 expert\_DNA 7500\_DE24802235\_2010-09-20\_16-34-29.xad

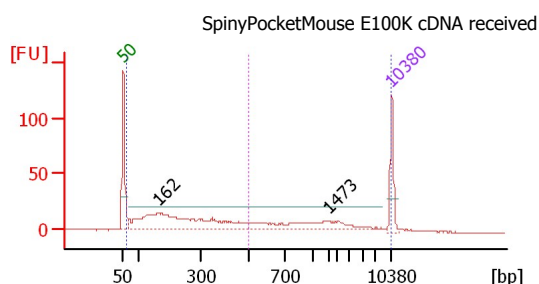
Created: 9/20/2010 4:34:30 PM  
 Modified: 9/20/2010 5:24:55 PM

### Electropherogram Summary



#### Peak table for Ladder

Peak	Size [bp]	Conc. [ng/μl]	Molarity [nmol/l]	Observations
1	50	8.30	251.5	Lower Marker
2	100	4.00	60.6	Ladder Peak
3	300	4.00	20.2	Ladder Peak
4	500	4.00	12.1	Ladder Peak
5	700	4.00	8.7	Ladder Peak
6	1,000	4.00	6.1	Ladder Peak
7	1,500	4.00	4.0	Ladder Peak
8	2,000	4.00	3.0	Ladder Peak
9	3,000	4.00	2.0	Ladder Peak
10	5,000	4.00	1.2	Ladder Peak
11	7,000	4.00	0.9	Ladder Peak
12	10,380	4.20	0.6	Upper Marker



#### Peak table for sample 1 :

Peak	Size [bp]	Conc. [ng/μl]	Molarity [nmol/l]	Observations
1	50	8.30	251.5	Lower Marker
2	162	29.93	279.4	
3	1,473	5.64	5.8	
4	10,380	4.20	0.6	Upper Marker

#### SpinyPocketMouse E100K cDNA received

#### Overall Results for sample 1 : SpinyPocketMouse E100K cDNA r

Number of peaks found: 2  
 Area 1: 156.5  
 Area 2: 367.0

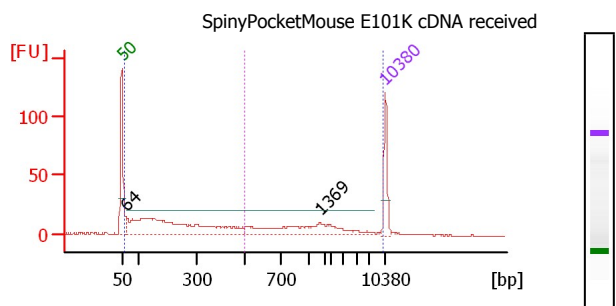
#### Region table for sample 1 : SpinyPocketMouse E100K cDNA rece

From [bp]	To [bp]	Area	% of Total	Average Size [bp]	Size distribution in CV [%]	Conc. [ng/μl]	Co lor
60	10,000	367.0	95	1,100	100.0	28.12	Blue
500	10,000	156.5	41	2,206	100.0	8.98	Pink

Assay Class: DNA 7500  
 Data Path: D:\...-20\2100 expert\_DNA 7500\_DE24802235\_2010-09-20\_16-34-29.xad

Created: 9/20/2010 4:34:30 PM  
 Modified: 9/20/2010 5:24:55 PM

### Electropherogram Summary Continued ...



#### Peak table for sample 2 :

Peak	Size [bp]	Conc. [ng/μl]
1	50	8.30
2	64	27.61
3	1,369	5.87
4	10,380	4.20

#### SpinyPocketMouse E101K cDNA received

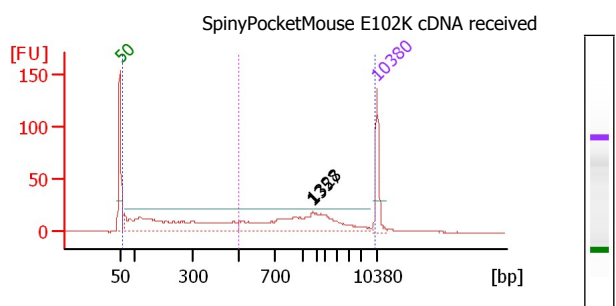
Molarity [nmol/l]	Observations
251.5	Lower Marker
649.3	
6.5	
0.6	Upper Marker

#### Overall Results for sample 2 : SpinyPocketMouse E101K cDNA r

Number of peaks found: 2  
 Area 1: 131.6  
 Area 2: 309.4

#### Region table for sample 2 : SpinyPocketMouse E101K cDNA rece

From [bp]	To [bp]	Area [bp]	% of Total	Average Size [bp]	Size distribution in CV [%]	Conc. [ng/μl]	Co lor
60	10,000	309.4	96	1,026	100.0	25.67	Blue
500	10,000	131.6	41	2,069	100.0	8.09	Pink



#### Peak table for sample 3 :

Peak	Size [bp]	Conc. [ng/μl]
1	50	8.30
2	1,328	18.20
3	1,357	9.70
4	10,380	4.20

#### SpinyPocketMouse E102K cDNA received

Molarity [nmol/l]	Observations
251.5	Lower Marker
20.8	
10.8	
0.6	Upper Marker

#### Overall Results for sample 3 : SpinyPocketMouse E102K cDNA r

Number of peaks found: 2  
 Area 1: 245.9  
 Area 2: 442.0

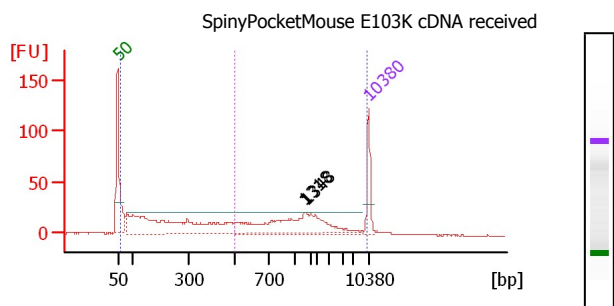
#### Region table for sample 3 : SpinyPocketMouse E102K cDNA rece

From [bp]	To [bp]	Area [bp]	% of Total	Average Size [bp]	Size distribution in CV [%]	Conc. [ng/μl]	Co lor
60	10,000	442.0	95	1,279	100.0	27.68	Blue
500	10,000	245.9	53	2,088	100.0	12.21	Pink

Assay Class: DNA 7500  
 Data Path: D:\...-20\2100 expert\_DNA 7500\_DE24802235\_2010-09-20\_16-34-29.xad

Created: 9/20/2010 4:34:30 PM  
 Modified: 9/20/2010 5:24:55 PM

### Electropherogram Summary Continued ...



#### Peak table for sample 4 :

Peak	Size [bp]	Conc. [ng/μl]
1	50	8.30
2	1,318	23.66
3	1,348	12.07
4	10,380	4.20

#### SpinyPocketMouse E103K cDNA received

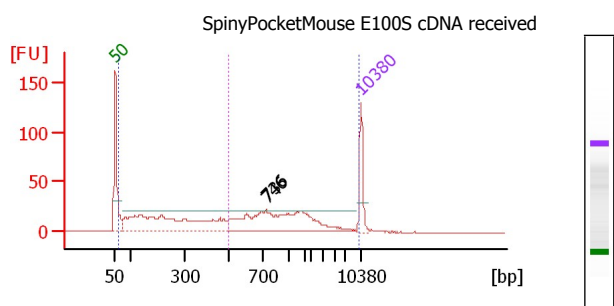
Molarity [nmol/l]	Observations
251.5	Lower Marker
27.2	
13.6	
0.6	Upper Marker

#### Overall Results for sample 4 : SpinyPocketMouse E103K cDNA r

Number of peaks found: 2  
 Area 1: 247.4  
 Area 2: 472.6

#### Region table for sample 4 : SpinyPocketMouse E103K cDNA rece

From [bp]	To [bp]	Area	% of Total	Average Size [bp]	Size distribution in CV [%]	Conc. [ng/μl]	Co lor
60	10,000	472.6	96	1,111	100.0	34.97	Blue
500	10,000	247.4	50	1,947	100.0	14.34	Magenta



#### Peak table for sample 5 :

Peak	Size [bp]	Conc. [ng/μl]
1	50	8.30
2	736	27.58
3	746	15.00
4	10,380	4.20

#### SpinyPocketMouse E100S cDNA received

Molarity [nmol/l]	Observations
251.5	Lower Marker
56.8	
30.5	
0.6	Upper Marker

#### Overall Results for sample 5 : SpinyPocketMouse E100S cDNA r

Number of peaks found: 2  
 Area 1: 281.7  
 Area 2: 511.9

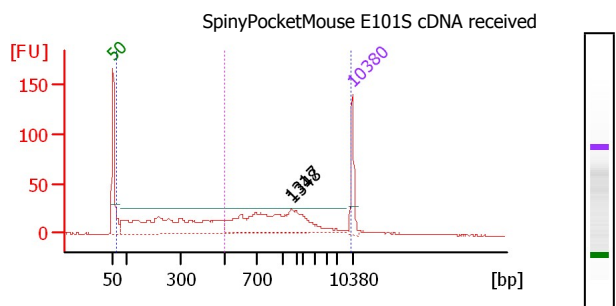
#### Region table for sample 5 : SpinyPocketMouse E100S cDNA rece

From [bp]	To [bp]	Area	% of Total	Average Size [bp]	Size distribution in CV [%]	Conc. [ng/μl]	Co lor
60	10,000	511.9	98	981	100.0	34.53	Blue
500	10,000	281.7	54	1,593	100.0	15.29	Magenta

Assay Class: DNA 7500  
 Data Path: D:\...-20\2100 expert\_DNA 7500\_DE24802235\_2010-09-20\_16-34-29.xad

Created: 9/20/2010 4:34:30 PM  
 Modified: 9/20/2010 5:24:55 PM

### Electropherogram Summary Continued ...



#### Peak table for sample 6 :

Peak	Size [bp]	Conc. [ng/μl]
1	50	8.30
2	1,317	26.02
3	1,348	14.47
4	10,380	4.20

#### SpinyPocketMouse E101S cDNA received

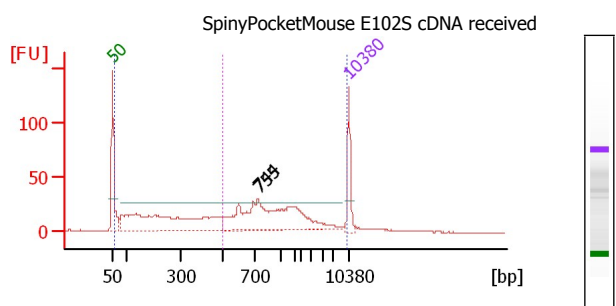
Molarity [nmol/l]	Observations
251.5	Lower Marker
29.9	
16.3	
0.6	Upper Marker

#### Overall Results for sample 6 : SpinyPocketMouse E101S cDNA received

Number of peaks found: 2  
 Area 1: 317.9  
 Area 2: 552.3

#### Region table for sample 6 : SpinyPocketMouse E101S cDNA received

From [bp]	To [bp]	Area [bp]	% of Total	Average Size [bp]	Size distribution in CV [%]	Conc. [ng/μl]	Color
60	10,000	552.3	93	1,071	100.0	37.67	Blue
500	10,000	317.9	54	1,684	100.0	17.77	Magenta



#### Peak table for sample 7 :

Peak	Size [bp]	Conc. [ng/μl]
1	50	8.30
2	744	33.21
3	755	19.03
4	10,380	4.20

#### SpinyPocketMouse E102S cDNA received

Molarity [nmol/l]	Observations
251.5	Lower Marker
67.6	
38.2	
0.6	Upper Marker

#### Overall Results for sample 7 : SpinyPocketMouse E102S cDNA received

Number of peaks found: 2  
 Area 1: 330.1  
 Area 2: 552.6

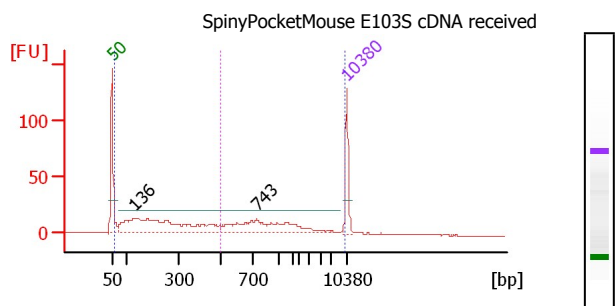
#### Region table for sample 7 : SpinyPocketMouse E102S cDNA received

From [bp]	To [bp]	Area [bp]	% of Total	Average Size [bp]	Size distribution in CV [%]	Conc. [ng/μl]	Color
60	10,000	552.6	93	1,120	100.0	41.42	Blue
500	10,000	330.1	56	1,718	100.0	20.36	Magenta

Assay Class: DNA 7500  
 Data Path: D:\...-20\2100 expert\_DNA 7500\_DE24802235\_2010-09-20\_16-34-29.xad

Created: 9/20/2010 4:34:30 PM  
 Modified: 9/20/2010 5:24:55 PM

### Electropherogram Summary Continued ...



#### Peak table for sample 8 :

Peak	Size [bp]	Conc. [ng/μl]
1	50	8.30
2	136	33.55
3	743	8.78
4	10,380	4.20

#### SpinyPocketMouse E103S cDNA received

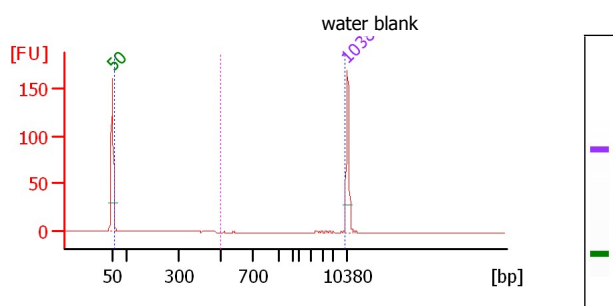
Molarity [nmol/l]	Observations
251.5	Lower Marker
374.2	
17.9	
0.6	Upper Marker

#### Overall Results for sample 8 : SpinyPocketMouse E103S cDNA received

Number of peaks found: 2  
 Area 1: 153.1  
 Area 2: 316.5

#### Region table for sample 8 : SpinyPocketMouse E103S cDNA received

From [bp]	To [bp]	Area	% of Total	Average Size [bp]	Size distribution in CV [%]	Conc. [ng/μl]	Color
60	10,000	316.5	93	977	100.0	26.00	Blue
500	10,000	153.1	45	1,771	100.0	9.76	Pink



#### Peak table for sample 9 :

Peak	Size [bp]	Conc. [ng/μl]
1	50	8.30
2	10,380	4.20

#### water blank

Molarity [nmol/l]	Observations
251.5	Lower Marker
0.6	Upper Marker

#### Overall Results for sample 9 : water blank

Number of peaks found: 0  
 Area 1: 1.4  
 Area 2: 1.5

#### Region table for sample 9 : water blank

From [bp]	To [bp]	Area	% of Total	Average Size [bp]	Size distribution in	Conc. [ng/μl]	Color
60	10,000	1.5	53	7,240	51.4	0.06	Blue
500	10,000	1.4	52	8,752	21.7	0.06	Pink



Assay Class: DNA 7500  
Data Path: D:\...-20\2100 expert\_DNA 7500\_DE24802235\_2010-09-20\_16-34-29.xad

Created: 9/20/2010 4:34:30 PM  
Modified: 9/20/2010 5:24:55 PM

**Gel Image**