

Assay Class: Eukaryote Total RNA Nano  
Data Path: D:\...\Eukaryote Total RNA Nano\_DE24802235\_2011-07-06\_15-13-56.xad

Created: 7/6/2011 3:13:55 PM  
Modified: 7/6/2011 5:07:40 PM

## Electrophoresis Assay Details

### General Analysis Settings

Number of Available Sample and Ladder Wells (Max.) : 13  
Minimum Visible Range [s] : 17  
Maximum Visible Range [s] : 70  
Start Analysis Time Range [s] : 19  
End Analysis Time Range [s] : 69  
Ladder Concentration [ng/ $\mu$ l] : 150  
Lower Marker Concentration [ng/ $\mu$ l] : 0  
Upper Marker Concentration [ng/ $\mu$ l] : 0  
Used Lower Marker for Quantitation  
Standard Curve Fit is Logarithmic  
Show Data Aligned to Lower Marker

### Integrator Settings

Integration Start Time [s] : 19  
Integration End Time [s] : 69  
Slope Threshold : 0.6  
Height Threshold [FU] : 0.5  
Area Threshold : 0.2  
Width Threshold [s] : 0.5  
Baseline Plateau [s] : 6

### Filter Settings

Filter Width [s] : 0.5  
Polynomial Order : 4

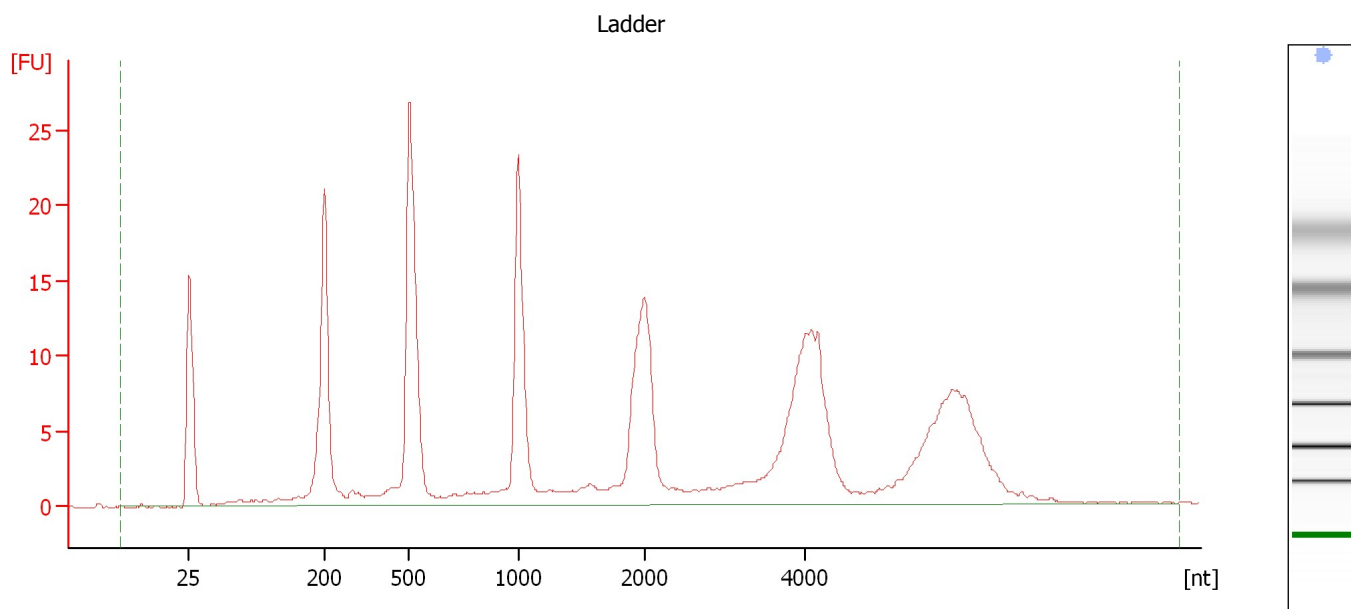
### Ladder

Ladder Peak	Size
1	25
2	200
3	500
4	1000
5	2000
6	4000

Assay Class: Eukaryote Total RNA Nano  
Data Path: D:\...Eukaryote Total RNA Nano\_DE24802235\_2011-07-06\_15-13-56.xad

Created: 7/6/2011 3:13:55 PM  
Modified: 7/6/2011 5:07:40 PM

### Electropherogram Summary



### Overall Results for Ladder

RNA Area: 270.6

Result Flagging Color:



RNA Concentration: 150 ng/μl

Result Flagging Label:

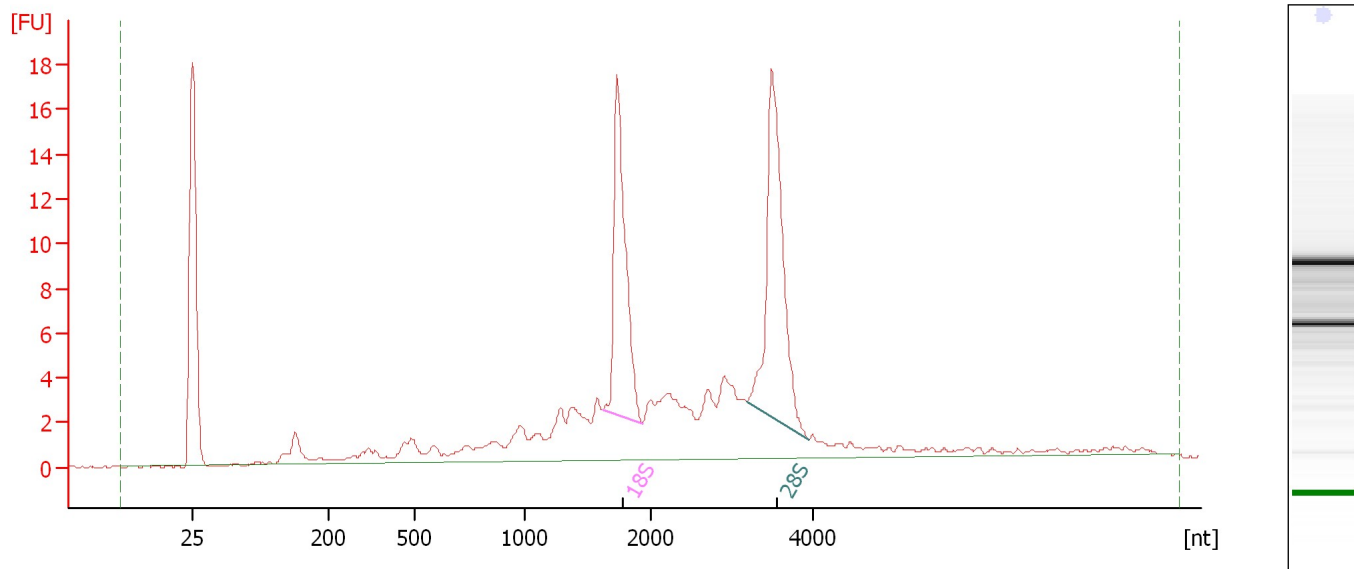
All Other Samples

Assay Class: Eukaryote Total RNA Nano  
Data Path: D:\...Eukaryote Total RNA Nano\_DE24802235\_2011-07-06\_15-13-56.xad

Created: 7/6/2011 3:13:55 PM  
Modified: 7/6/2011 5:07:40 PM

**Electropherogram Summary Continued ...**

RNA Retina A as received 2nd attempt

**Overall Results for sample 1 : RNA Retina A as received 2nd attempt**

RNA Area: 138.9 RNA Integrity Number (RIN): 8 (B.02.08)  
RNA Concentration: 77 ng/μl Result Flagging Color:   
rRNA Ratio [28s / 18s]: 1.3 Result Flagging Label: RIN:8

**Fragment table for sample 1 : RNA Retina A as received 2nd attempt**

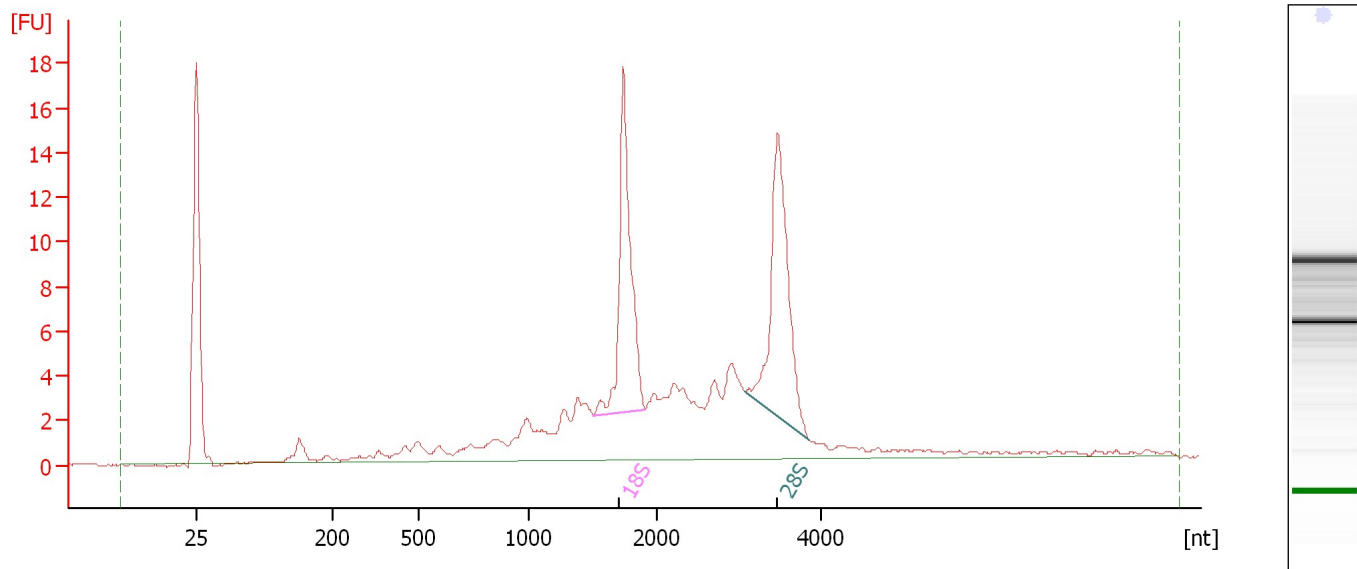
Name	Start Size [nt]	End Size [nt]	Area	% of total Area
18S	1,622	1,934	21.1	15.2
28S	3,173	3,949	26.9	19.3

Assay Class: Eukaryote Total RNA Nano  
Data Path: D:\...Eukaryote Total RNA Nano\_DE24802235\_2011-07-06\_15-13-56.xad

Created: 7/6/2011 3:13:55 PM  
Modified: 7/6/2011 5:07:40 PM

**Electropherogram Summary Continued ...**

RNA Retina B as received 2nd attempt

**Overall Results for sample 2 : RNA Retina B as received 2nd attempt**

RNA Area:	137.7	RNA Integrity Number (RIN):	8 (B.02.08)
RNA Concentration:	76 ng/μl	Result Flagging Color:	<div style="background-color: #ccccff; width: 30px; height: 15px; display: inline-block;"></div>
rRNA Ratio [28s / 18s]:	1.1	Result Flagging Label:	RIN:8

**Fragment table for sample 2 : RNA Retina B as received 2nd attempt**

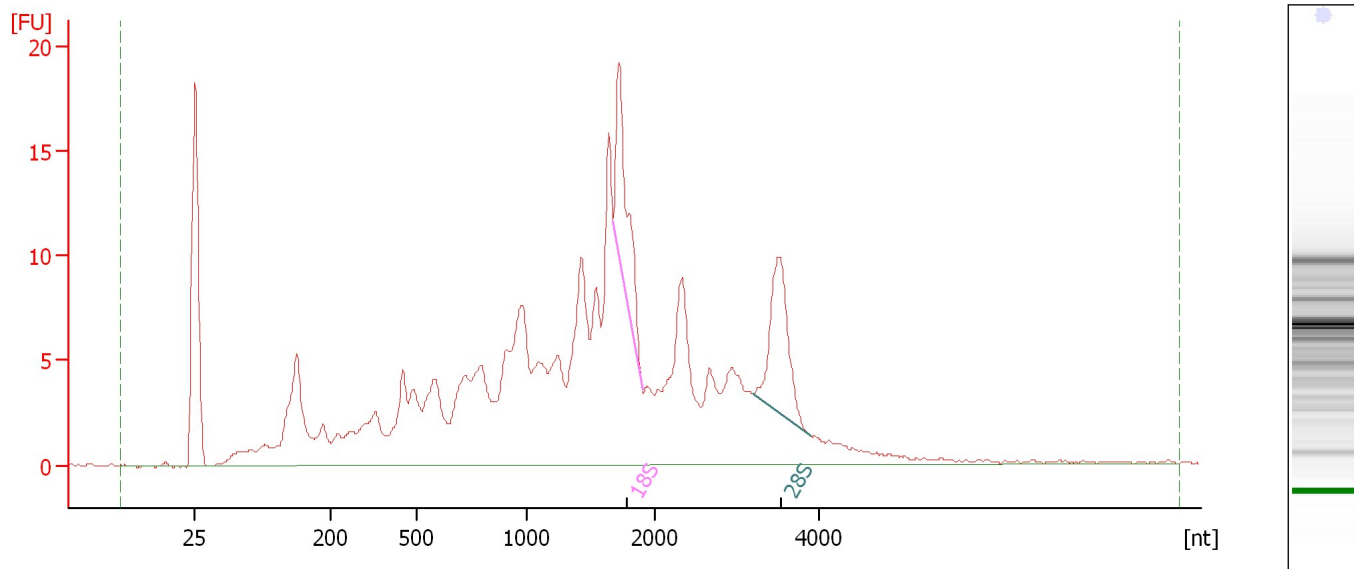
Name	Start Size [nt]	End Size [nt]	Area	% of total Area
18S	1,501	1,911	21.1	15.3
28S	3,076	3,861	23.1	16.8

Assay Class: Eukaryote Total RNA Nano  
Data Path: D:\...Eukaryote Total RNA Nano\_DE24802235\_2011-07-06\_15-13-56.xad

Created: 7/6/2011 3:13:55 PM  
Modified: 7/6/2011 5:07:40 PM

**Electropherogram Summary Continued ...**

RNA Spleen A as received 2nd attempt

**Overall Results for sample 3 : RNA Spleen A as received 2nd attempt**

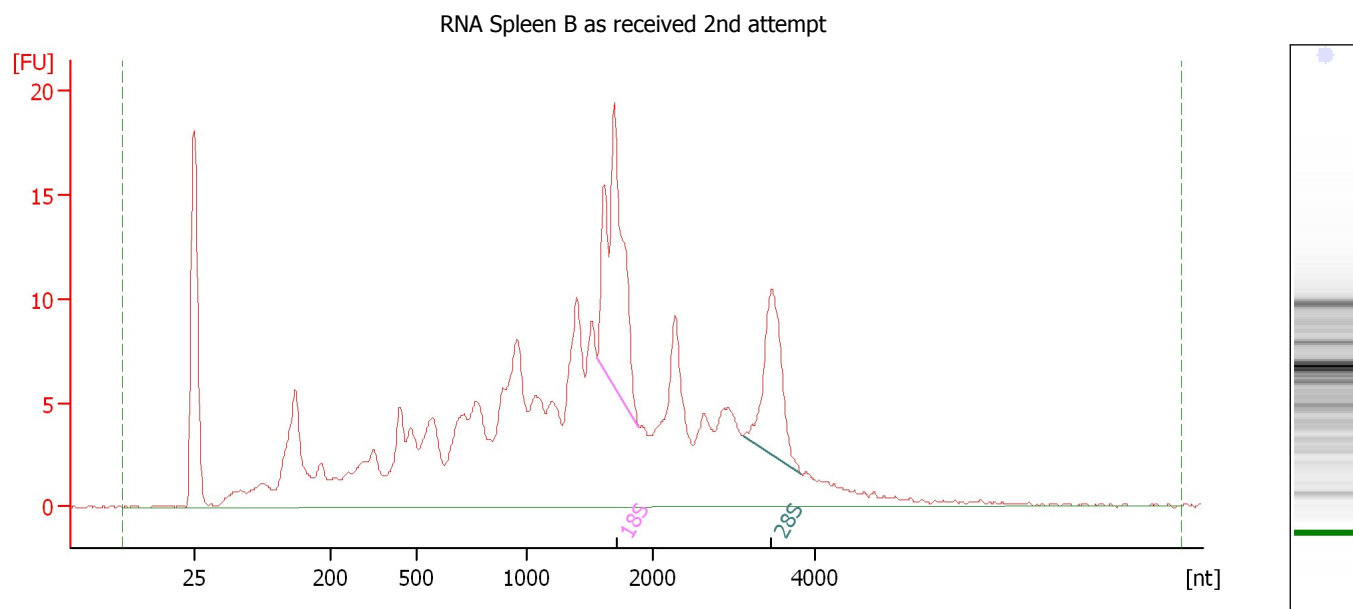
RNA Area: 292.9 RNA Integrity Number (RIN): 4.8 (B.02.08)  
RNA Concentration: 162 ng/μl Result Flagging Color:    
rRNA Ratio [28S / 18S]: 1.2 Result Flagging Label: RIN: 4.80

**Fragment table for sample 3 : RNA Spleen A as received 2nd attempt**

Name	Start Size [nt]	End Size [nt]	Area	% of total Area
18S	1,675	1,901	12.6	4.3
28S	3,196	3,916	14.6	5.0

Assay Class: Eukaryote Total RNA Nano  
Data Path: D:\...Eukaryote Total RNA Nano\_DE24802235\_2011-07-06\_15-13-56.xad

Created: 7/6/2011 3:13:55 PM  
Modified: 7/6/2011 5:07:40 PM

**Electropherogram Summary Continued ...****Overall Results for sample 4 : RNA Spleen B as received 2nd attempt**

RNA Area: 310.2 RNA Integrity Number (RIN): 6 (B.02.08)  
RNA Concentration: 172 ng/μl Result Flagging Color:   
rRNA Ratio [28s / 18s]: 0.5 Result Flagging Label: RIN:6

**Fragment table for sample 4 : RNA Spleen B as received 2nd attempt**

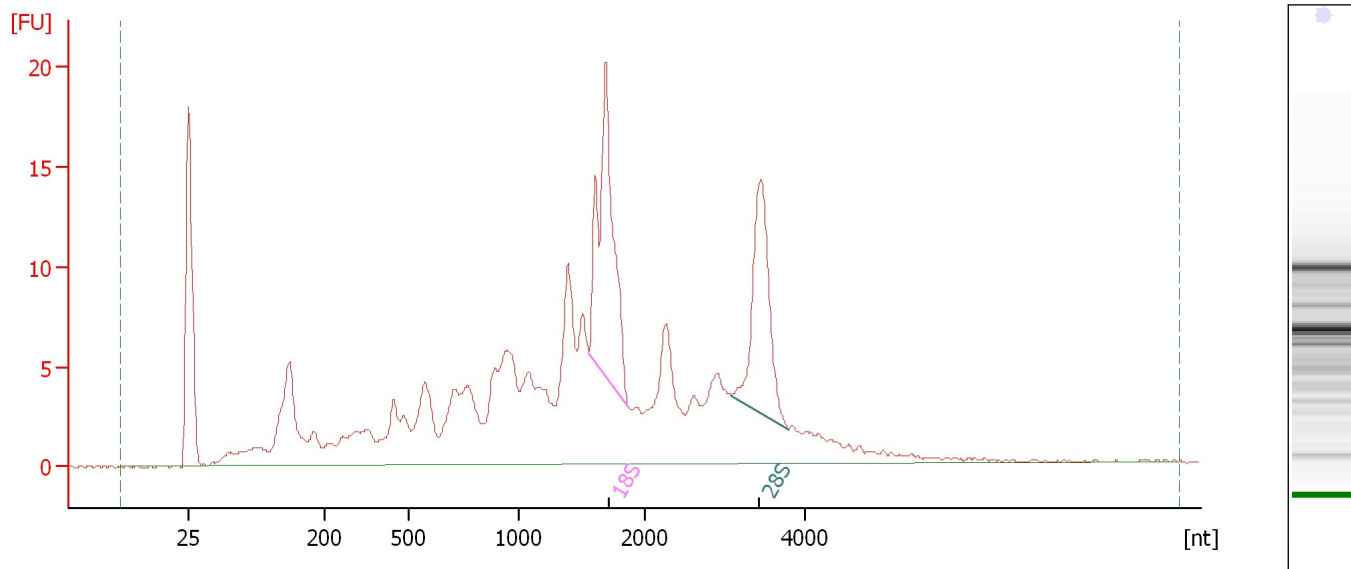
Name	Start Size [nt]	End Size [nt]	Area	% of total Area
18S	1,563	1,892	28.7	9.2
28S	3,107	3,831	15.7	5.1

Assay Class: Eukaryote Total RNA Nano  
Data Path: D:\...Eukaryote Total RNA Nano\_DE24802235\_2011-07-06\_15-13-56.xad

Created: 7/6/2011 3:13:55 PM  
Modified: 7/6/2011 5:07:40 PM

**Electropherogram Summary Continued ...**

RNA Mes.LymphNode A as received 2nd attempt

**Overall Results for sample 5 : RNA Mes.LymphNode A as received 2nd attempt**

RNA Area: 268.3 RNA Integrity Number (RIN): 6.6 (B.02.08)  
RNA Concentration: 149 ng/μl Result Flagging Color:    
rRNA Ratio [28s / 18s]: 0.7 Result Flagging Label: RIN: 6.60

**Fragment table for sample 5 : RNA Mes.LymphNode A as received 2nd attempt**

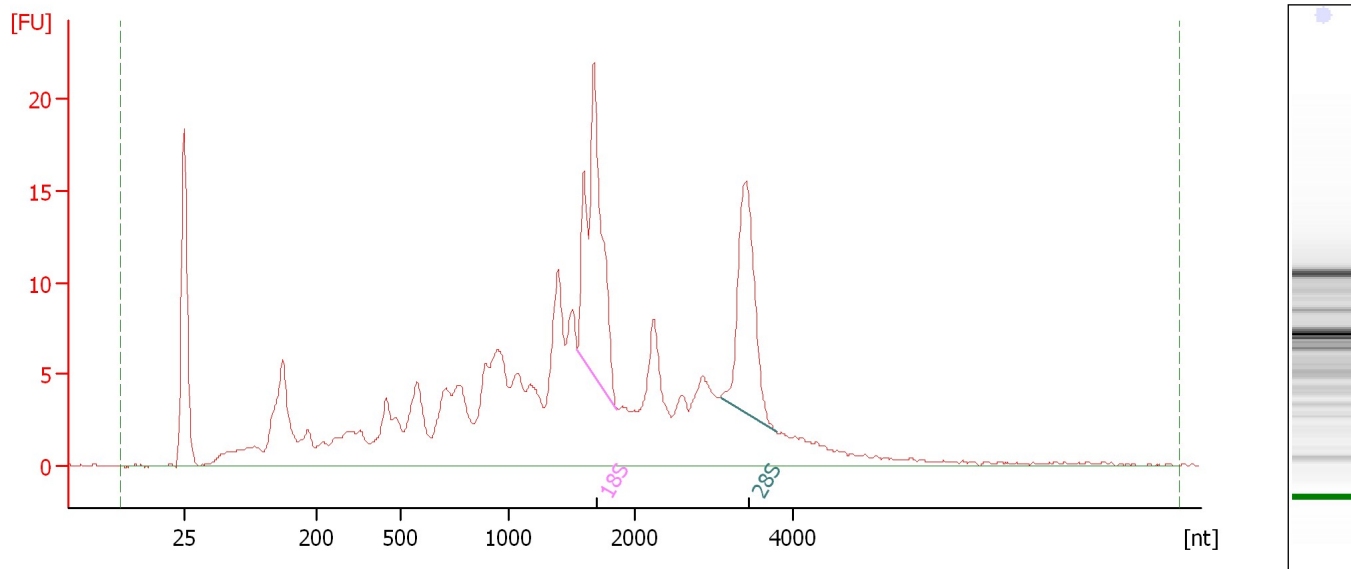
Name	Start Size [nt]	End Size [nt]	Area	% of total Area
18S	1,559	1,881	30.0	11.2
28S	3,072	3,788	21.0	7.8

Assay Class: Eukaryote Total RNA Nano  
Data Path: D:\...Eukaryote Total RNA Nano\_DE24802235\_2011-07-06\_15-13-56.xad

Created: 7/6/2011 3:13:55 PM  
Modified: 7/6/2011 5:07:40 PM

**Electropherogram Summary Continued ...**

RNA Mes.LymphNode B as received 2nd attempt

**Overall Results for sample 6 : RNA Mes.LymphNode B as received 2nd attempt**

RNA Area: 298.2 RNA Integrity Number (RIN): 6.6 (B.02.08)  
RNA Concentration: 165 ng/μl Result Flagging Color:    
rRNA Ratio [28s / 18s]: 0.7 Result Flagging Label: RIN: 6.60

**Fragment table for sample 6 : RNA Mes.LymphNode B as received 2nd attempt**

Name	Start Size [nt]	End Size [nt]	Area	% of total Area
18S	1,543	1,860	33.4	11.2
28S	3,080	3,777	23.5	7.9

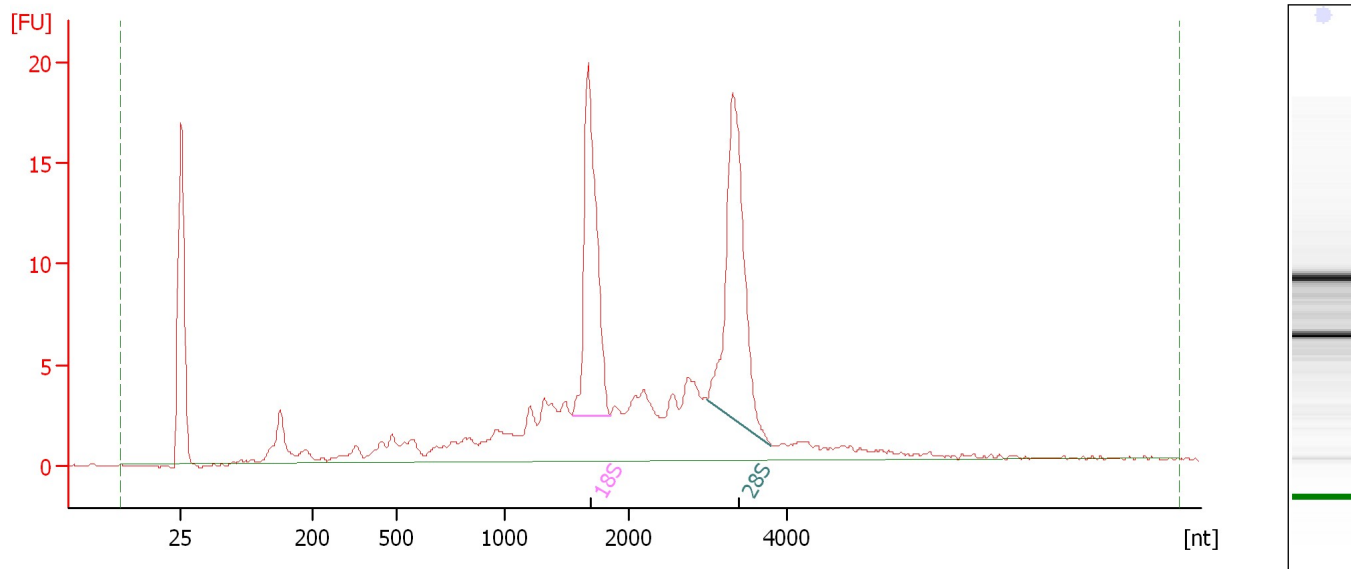


Assay Class: Eukaryote Total RNA Nano  
Data Path: D:\...Eukaryote Total RNA Nano\_DE24802235\_2011-07-06\_15-13-56.xad

Created: 7/6/2011 3:13:55 PM  
Modified: 7/6/2011 5:07:40 PM

**Electropherogram Summary Continued ...**

RNA Testis A as received 2nd attempt

**Overall Results for sample 7 : RNA Testis A as received 2nd attempt**

RNA Area:	167.9	RNA Integrity Number (RIN):	7.9 (B.02.08)
RNA Concentration:	93 ng/μl	Result Flagging Color:	<div style="background-color: #ccccff; width: 20px; height: 10px; display: inline-block;"></div>
rRNA Ratio [28S / 18S]:	1.2	Result Flagging Label:	RIN: 7.90

**Fragment table for sample 7 : RNA Testis A as received 2nd attempt**

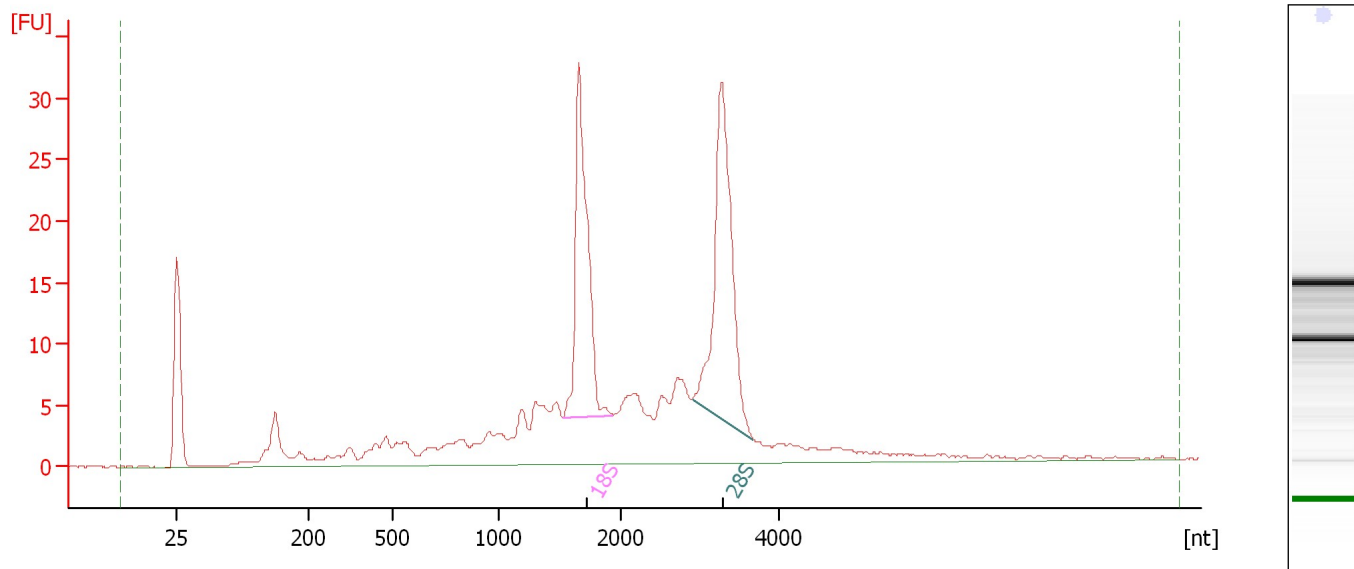
Name	Start Size [nt]	End Size [nt]	Area	% of total Area
18S	1,547	1,857	27.1	16.2
28S	3,004	3,813	31.9	19.0

Assay Class: Eukaryote Total RNA Nano  
Data Path: D:\...Eukaryote Total RNA Nano\_DE24802235\_2011-07-06\_15-13-56.xad

Created: 7/6/2011 3:13:55 PM  
Modified: 7/6/2011 5:07:40 PM

**Electropherogram Summary Continued ...**

RNA Testis B as received 2nd attempt

**Overall Results for sample 8 : RNA Testis B as received 2nd attempt**

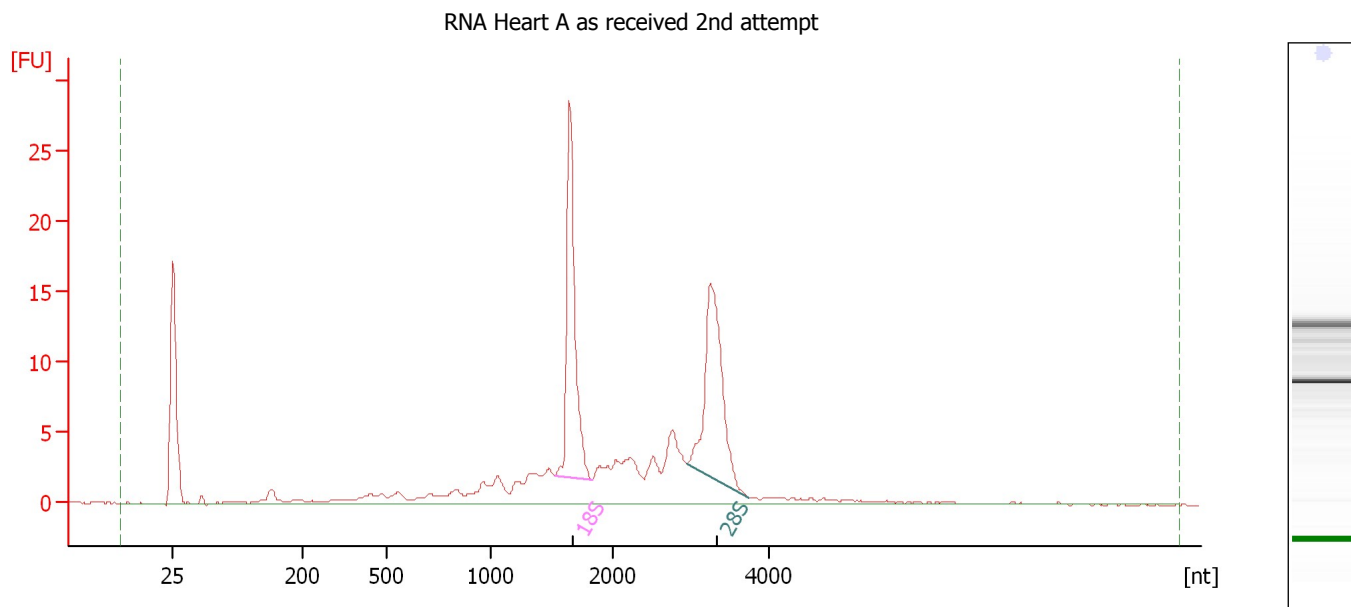
RNA Area: 282.5 RNA Integrity Number (RIN): 7.9 (B.02.08)  
RNA Concentration: 157 ng/μl Result Flagging Color:   
rRNA Ratio [28S / 18S]: 1.2 Result Flagging Label: RIN: 7.90

**Fragment table for sample 8 : RNA Testis B as received 2nd attempt**

Name	Start Size [nt]	End Size [nt]	Area	% of total Area
18S	1,525	1,933	44.8	15.9
28S	2,900	3,673	53.8	19.0

Assay Class: Eukaryote Total RNA Nano  
Data Path: D:\...Eukaryote Total RNA Nano\_DE24802235\_2011-07-06\_15-13-56.xad

Created: 7/6/2011 3:13:55 PM  
Modified: 7/6/2011 5:07:40 PM

**Electropherogram Summary Continued ...****Overall Results for sample 9 : RNA Heart A as received 2nd attempt**

RNA Area:	142.4	RNA Integrity Number (RIN):	8.2 (B.02.08)
RNA Concentration:	79 ng/μl	Result Flagging Color:	<div style="background-color: #ccccff; width: 20px; height: 10px; display: inline-block;"></div>
rRNA Ratio [28S / 18S]:	1.0	Result Flagging Label:	RIN: 8.20

**Fragment table for sample 9 : RNA Heart A as received 2nd attempt**

Name	Start Size [nt]	End Size [nt]	Area	% of total Area
18S	1,518	1,825	27.1	19.1
28S	2,932	3,726	27.2	19.1

Assay Class: Eukaryote Total RNA Nano  
Data Path: D:\...Eukaryote Total RNA Nano\_DE24802235\_2011-07-06\_15-13-56.xad

Created: 7/6/2011 3:13:55 PM  
Modified: 7/6/2011 5:07:40 PM

## Curves

### Standard Curve

