

Assay Class: Eukaryote Total RNA Nano
Data Path: D:\...Eukaryote Total RNA Nano_DE24802235_2011-07-06_16-41-07.xad

Created: 7/6/2011 4:41:06 PM
Modified: 7/7/2011 9:51:00 AM

Electrophoresis Assay Details

General Analysis Settings

Number of Available Sample and Ladder Wells (Max.) : 13

Minimum Visible Range [s] : 17

Maximum Visible Range [s] : 70

Start Analysis Time Range [s] : 19

End Analysis Time Range [s] : 69

Ladder Concentration [ng/μl] : 150

Lower Marker Concentration [ng/μl] : 0

Upper Marker Concentration [ng/μl] : 0

Used Lower Marker for Quantitation

Standard Curve Fit is Logarithmic

Show Data Aligned to Lower Marker

Integrator Settings

Integration Start Time [s] : 19

Integration End Time [s] : 69

Slope Threshold : 0.6

Height Threshold [FU] : 0.5

Area Threshold : 0.2

Width Threshold [s] : 0.5

Baseline Plateau [s] : 6

Filter Settings

Filter Width [s] : 0.5

Polynomial Order : 4

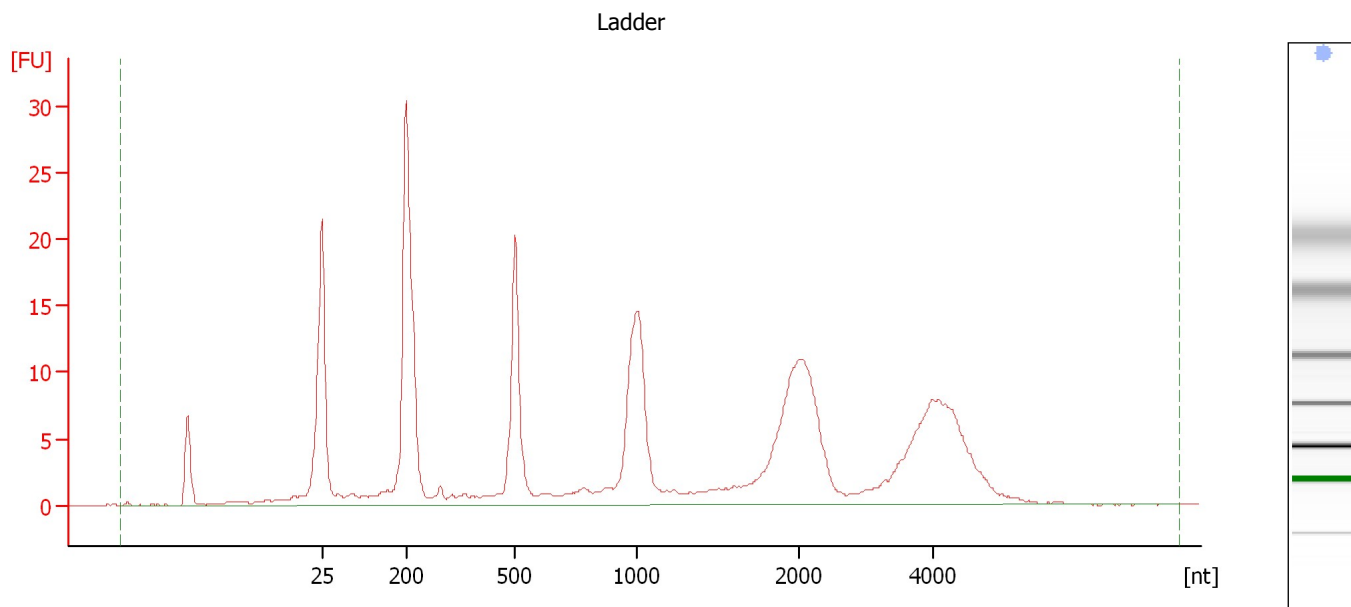
Ladder

Ladder Peak	Size
1	25
2	200
3	500
4	1000
5	2000
6	4000

Assay Class: Eukaryote Total RNA Nano
Data Path: D:\...Eukaryote Total RNA Nano_DE24802235_2011-07-06_16-41-07.xad

Created: 7/6/2011 4:41:06 PM
Modified: 7/7/2011 9:51:00 AM

Electropherogram Summary



Overall Results for Ladder

RNA Area: 243.1

Result Flagging Color:



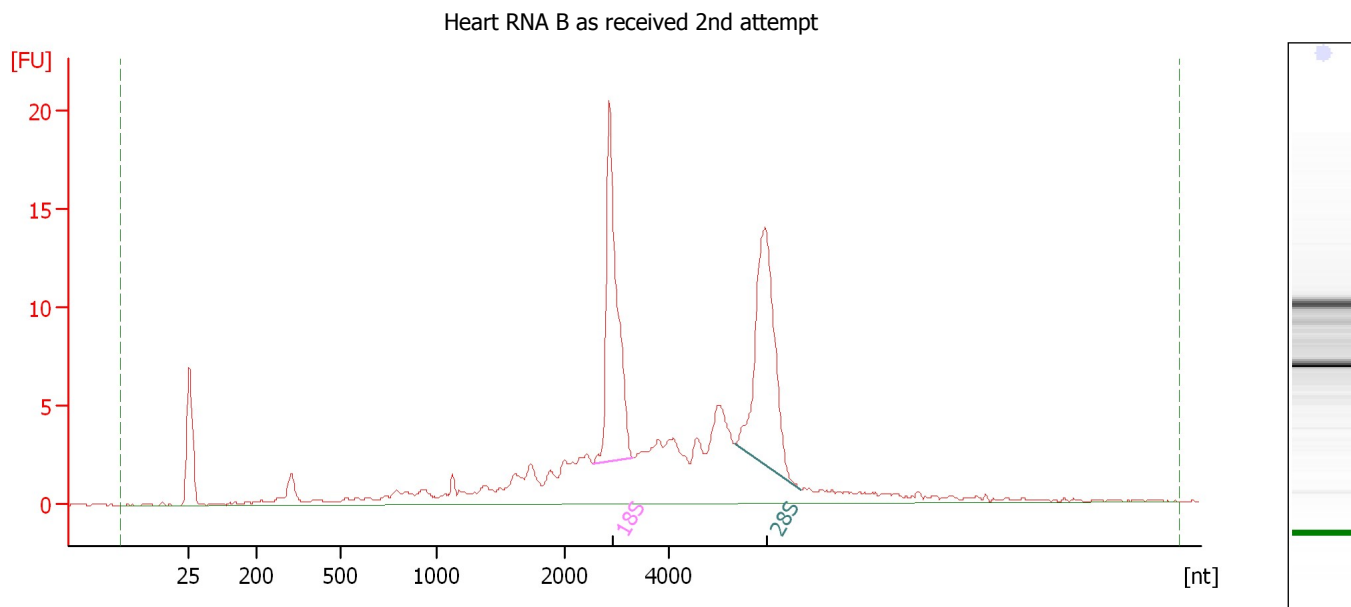
RNA Concentration: 150 ng/μl

Result Flagging Label:

All Other Samples

Assay Class: Eukaryote Total RNA Nano
Data Path: D:\...Eukaryote Total RNA Nano_DE24802235_2011-07-06_16-41-07.xad

Created: 7/6/2011 4:41:06 PM
Modified: 7/7/2011 9:51:00 AM

Electropherogram Summary Continued ...**Overall Results for sample 1 : Heart RNA B as received 2nd attempt**

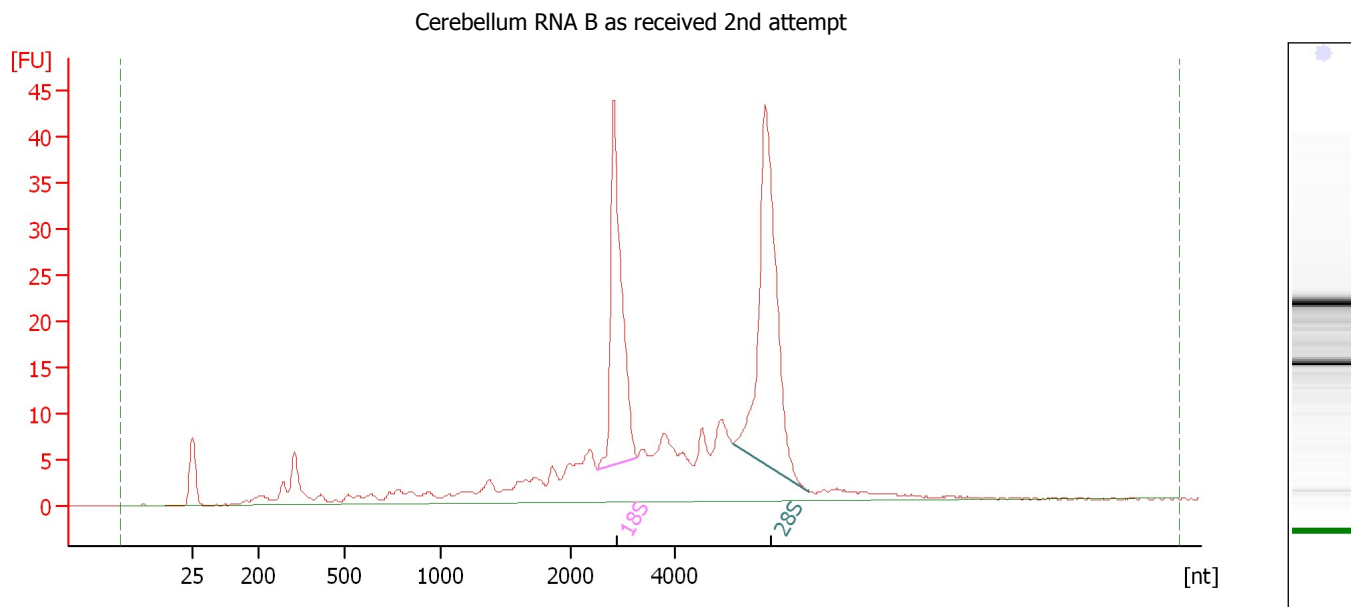
RNA Area:	144.4	RNA Integrity Number (RIN):	8 (B.02.08)
RNA Concentration:	89 ng/μl	Result Flagging Color:	<div style="background-color: #ccccff; width: 30px; height: 15px; display: inline-block;"></div>
rRNA Ratio [28S / 18S]:	1.0	Result Flagging Label:	RIN:8

Fragment table for sample 1 : Heart RNA B as received 2nd attempt

Name	Start Size [nt]	End Size [nt]	Area	% of total Area
18S	2,527	3,321	24.5	17.0
28S	5,236	6,499	25.3	17.5

Assay Class: Eukaryote Total RNA Nano
Data Path: D:\...Eukaryote Total RNA Nano_DE24802235_2011-07-06_16-41-07.xad

Created: 7/6/2011 4:41:06 PM
Modified: 7/7/2011 9:51:00 AM

Electropherogram Summary Continued ...**Overall Results for sample 2 : Cerebellum RNA B as received 2nd attempt**

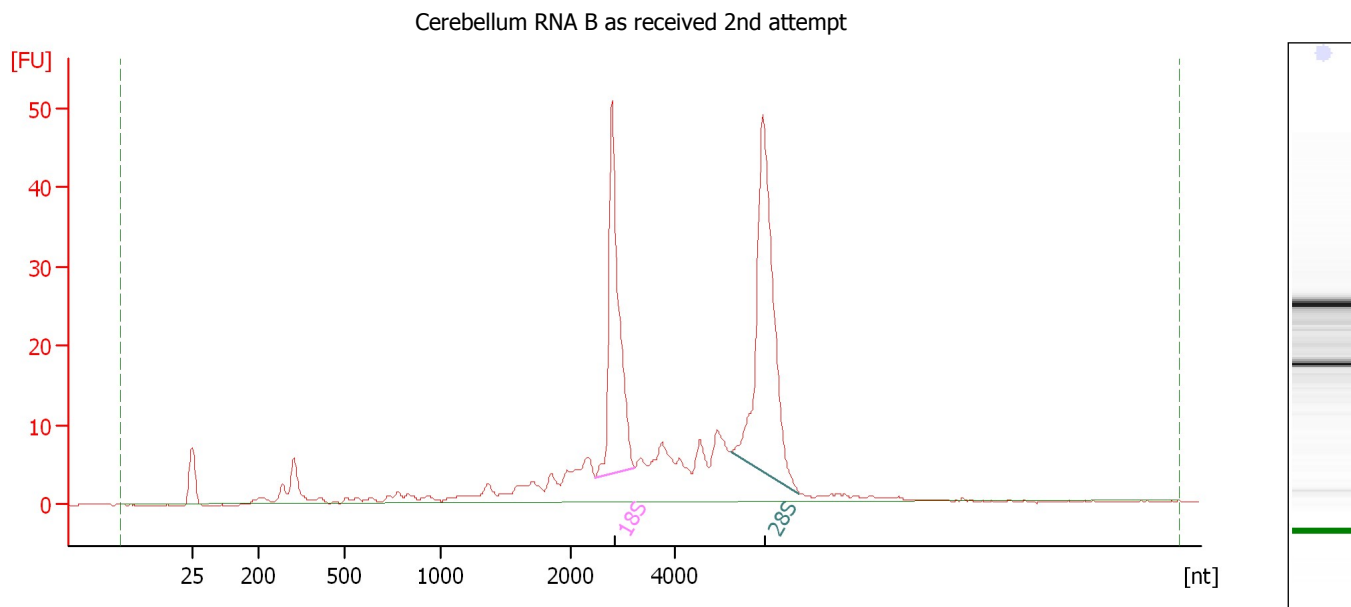
RNA Area:	312.1	RNA Integrity Number (RIN):	8.2 (B.02.08)
RNA Concentration:	193 ng/μl	Result Flagging Color:	<div style="background-color: #ccccff; width: 20px; height: 10px; display: inline-block;"></div>
rRNA Ratio [28s / 18s]:	1.4	Result Flagging Label:	RIN: 8.20

Fragment table for sample 2 : Cerebellum RNA B as received 2nd attempt

Name	Start Size [nt]	End Size [nt]	Area	% of total Area
18S	2,517	3,266	52.7	16.9
28S	5,087	6,524	73.0	23.4

Assay Class: Eukaryote Total RNA Nano
Data Path: D:\...Eukaryote Total RNA Nano_DE24802235_2011-07-06_16-41-07.xad

Created: 7/6/2011 4:41:06 PM
Modified: 7/7/2011 9:51:00 AM

Electropherogram Summary Continued ...**Overall Results for sample 3 : Cerebellum RNA B as received 2nd attempt**

RNA Area:	312.8	RNA Integrity Number (RIN):	8.5 (B.02.08)
RNA Concentration:	193 ng/μl	Result Flagging Color:	<div style="background-color: #ccccff; width: 20px; height: 10px; display: inline-block;"></div>
rRNA Ratio [28s / 18s]:	1.4	Result Flagging Label:	RIN: 8.50

Fragment table for sample 3 : Cerebellum RNA B as received 2nd attempt

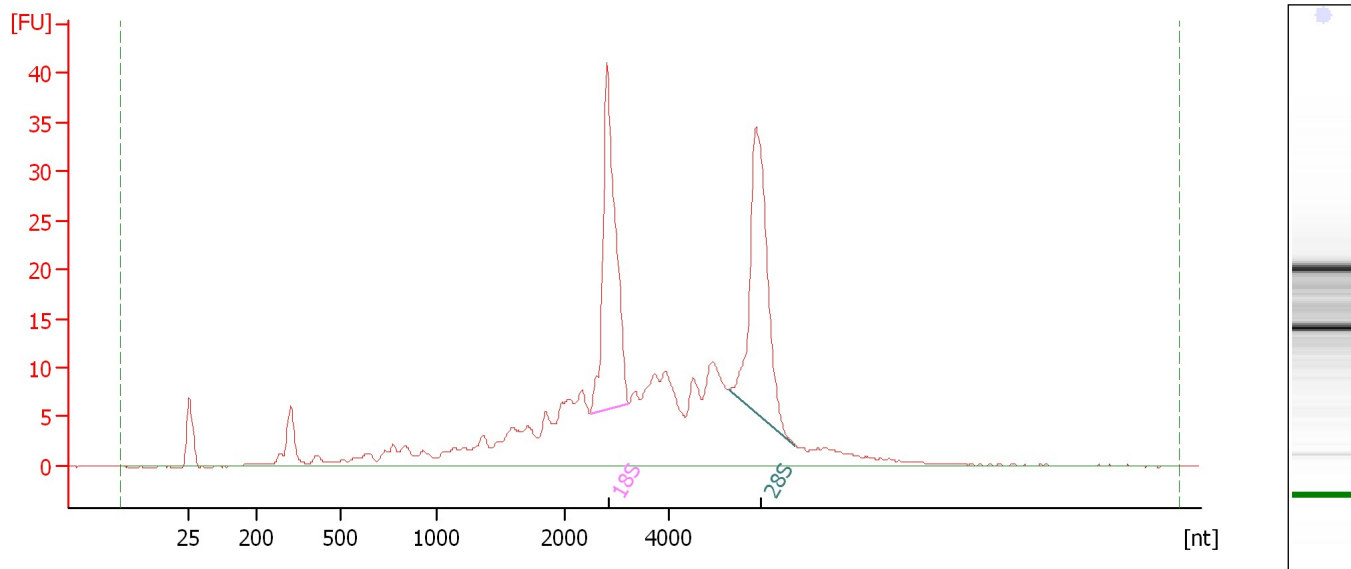
Name	Start Size [nt]	End Size [nt]	Area	% of total Area
18S	2,477	3,225	58.4	18.7
28S	5,026	6,342	80.9	25.9

Assay Class: Eukaryote Total RNA Nano
Data Path: D:\...Eukaryote Total RNA Nano_DE24802235_2011-07-06_16-41-07.xad

Created: 7/6/2011 4:41:06 PM
Modified: 7/7/2011 9:51:00 AM

Electropherogram Summary Continued ...

Liver RNA B as received 2nd attempt

**Overall Results for sample 4 : Liver RNA B as received 2nd attempt**

RNA Area:	364.7	RNA Integrity Number (RIN):	7.5 (B.02.08)
RNA Concentration:	225 ng/μl	Result Flagging Color:	
rRNA Ratio [28s / 18s]:	1.0	Result Flagging Label:	RIN: 7.50

Fragment table for sample 4 : Liver RNA B as received 2nd attempt

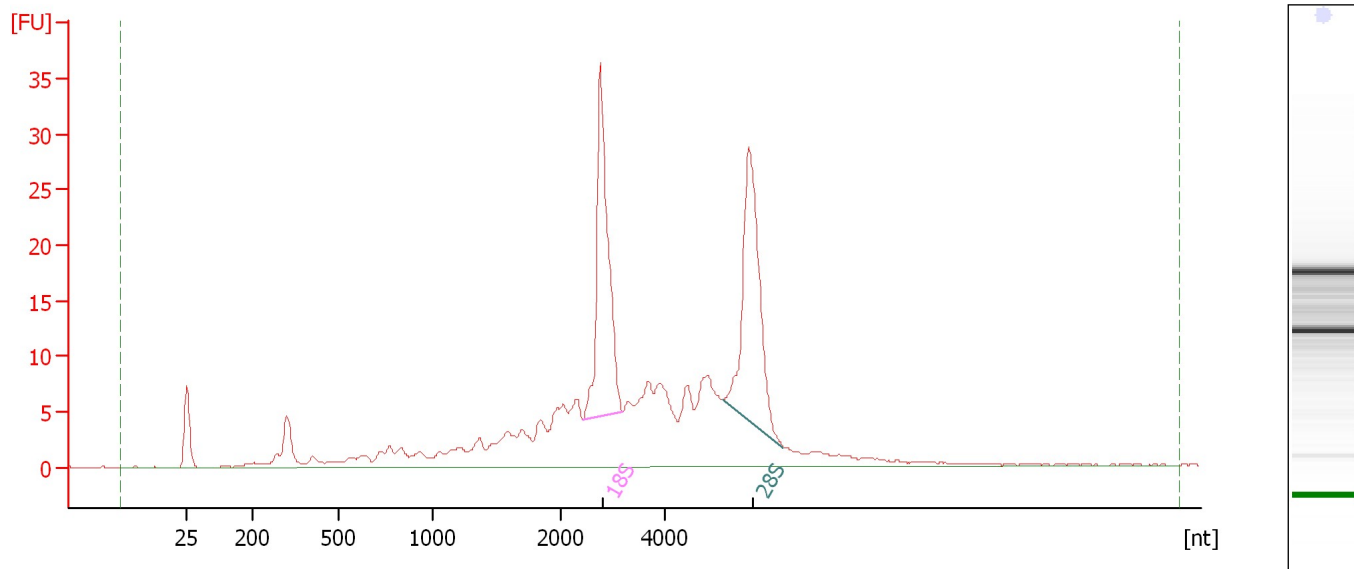
Name	Start Size [nt]	End Size [nt]	Area	% of total Area
18S	2,486	3,220	55.3	15.2
28S	5,134	6,397	55.8	15.3

Assay Class: Eukaryote Total RNA Nano
Data Path: D:\...Eukaryote Total RNA Nano_DE24802235_2011-07-06_16-41-07.xad

Created: 7/6/2011 4:41:06 PM
Modified: 7/7/2011 9:51:00 AM

Electropherogram Summary Continued ...

Liver RNA B as received 2nd attempt

**Overall Results for sample 5 : Liver RNA B as received 2nd attempt**

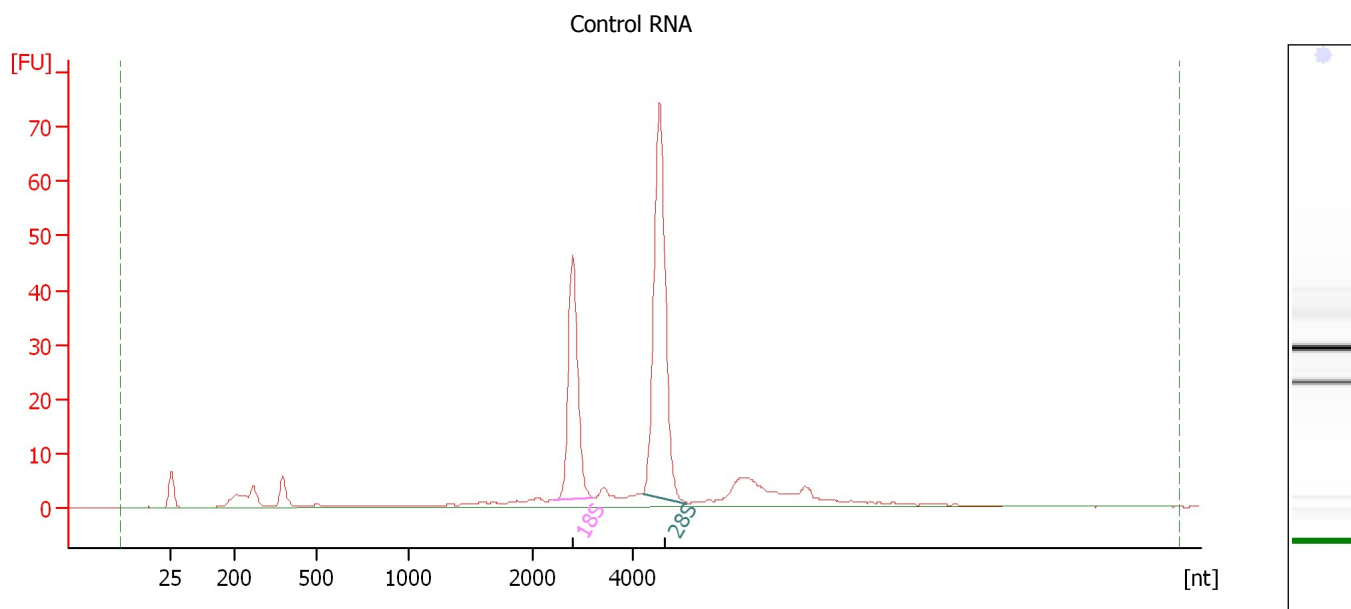
RNA Area:	291.6	RNA Integrity Number (RIN):	7.5 (B.02.08)
RNA Concentration:	180 ng/μl	Result Flagging Color:	
rRNA Ratio [28S / 18S]:	1.0	Result Flagging Label:	RIN: 7.50

Fragment table for sample 5 : Liver RNA B as received 2nd attempt

Name	Start Size [nt]	End Size [nt]	Area	% of total Area
18S	2,438	3,175	44.6	15.3
28S	5,119	6,264	44.8	15.4

Assay Class: Eukaryote Total RNA Nano
Data Path: D:\...Eukaryote Total RNA Nano_DE24802235_2011-07-06_16-41-07.xad

Created: 7/6/2011 4:41:06 PM
Modified: 7/7/2011 9:51:00 AM

Electropherogram Summary Continued ...**Overall Results for sample 10 : Control RNA**

RNA Area:	267.5	RNA Integrity Number (RIN):	9.9 (B.02.08)
RNA Concentration:	165 ng/μl	Result Flagging Color:	<div style="background-color: #ccccff; width: 30px; height: 15px; display: inline-block;"></div>
rRNA Ratio [28S / 18S]:	1.8	Result Flagging Label:	RIN: 9.90

Fragment table for sample 10 : Control RNA

Name	Start Size [nt]	End Size [nt]	Area	% of total Area
18S	2,403	3,207	56.1	21.0
28S	4,180	5,069	102.2	38.2

Assay Class: Eukaryote Total RNA Nano
Data Path: D:\...Eukaryote Total RNA Nano_DE24802235_2011-07-06_16-41-07.xad

Created: 7/6/2011 4:41:06 PM
Modified: 7/7/2011 9:51:00 AM

Curves

Standard Curve

