

Assay Class: Eukaryote Total RNA Nano  
Data Path: D:\...\Eukaryote Total RNA Nano\_DE24802235\_2011-07-19\_12-45-10.xad

Created: 7/19/2011 12:45:09 PM  
Modified: 7/19/2011 1:40:44 PM

## Electrophoresis Assay Details

### General Analysis Settings

Number of Available Sample and Ladder Wells (Max.) : 13

Minimum Visible Range [s] : 17

Maximum Visible Range [s] : 70

Start Analysis Time Range [s] : 19

End Analysis Time Range [s] : 69

Ladder Concentration [ng/ $\mu$ l] : 150

Lower Marker Concentration [ng/ $\mu$ l] : 0

Upper Marker Concentration [ng/ $\mu$ l] : 0

Used Lower Marker for Quantitation

Standard Curve Fit is Logarithmic

Show Data Aligned to Lower Marker

### Integrator Settings

Integration Start Time [s] : 19

Integration End Time [s] : 69

Slope Threshold : 0.6

Height Threshold [FU] : 0.5

Area Threshold : 0.2

Width Threshold [s] : 0.5

Baseline Plateau [s] : 6

### Filter Settings

Filter Width [s] : 0.5

Polynomial Order : 4

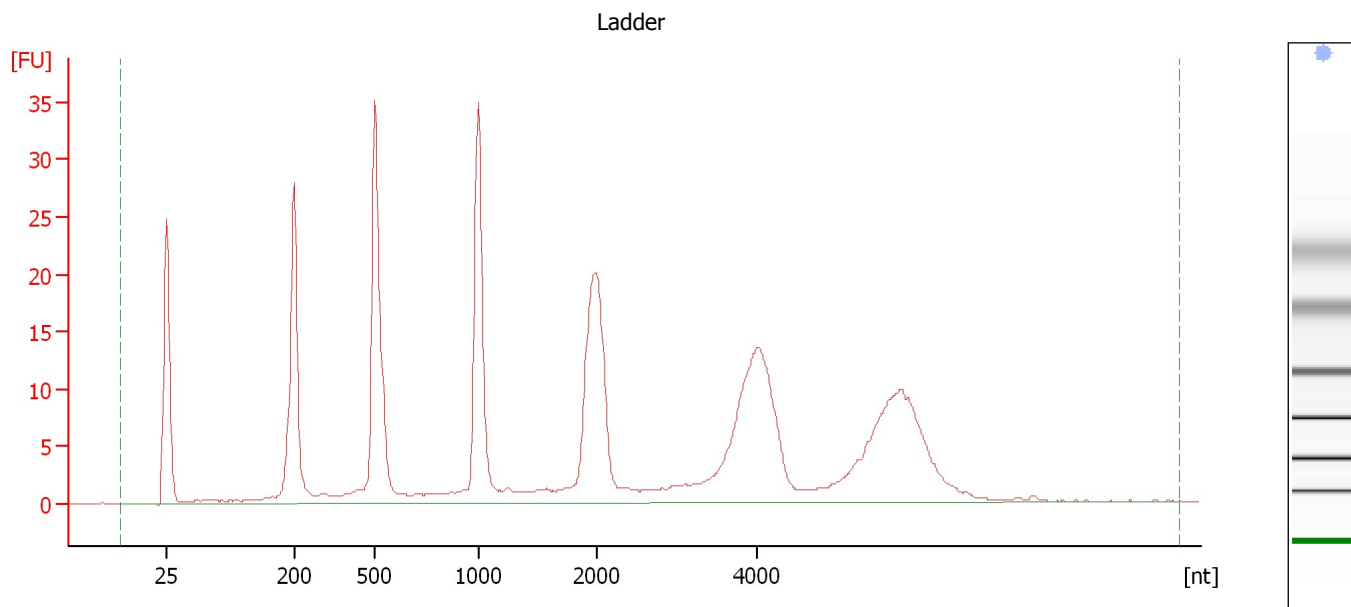
### Ladder

Ladder Peak	Size
1	25
2	200
3	500
4	1000
5	2000
6	4000

Assay Class: Eukaryote Total RNA Nano  
Data Path: D:\...Eukaryote Total RNA Nano\_DE24802235\_2011-07-19\_12-45-10.xad

Created: 7/19/2011 12:45:09 PM  
Modified: 7/19/2011 1:40:44 PM

### Electropherogram Summary



### Overall Results for Ladder

RNA Area: 343.1

Result Flagging Color:



RNA Concentration: 150 ng/μl

Result Flagging Label:

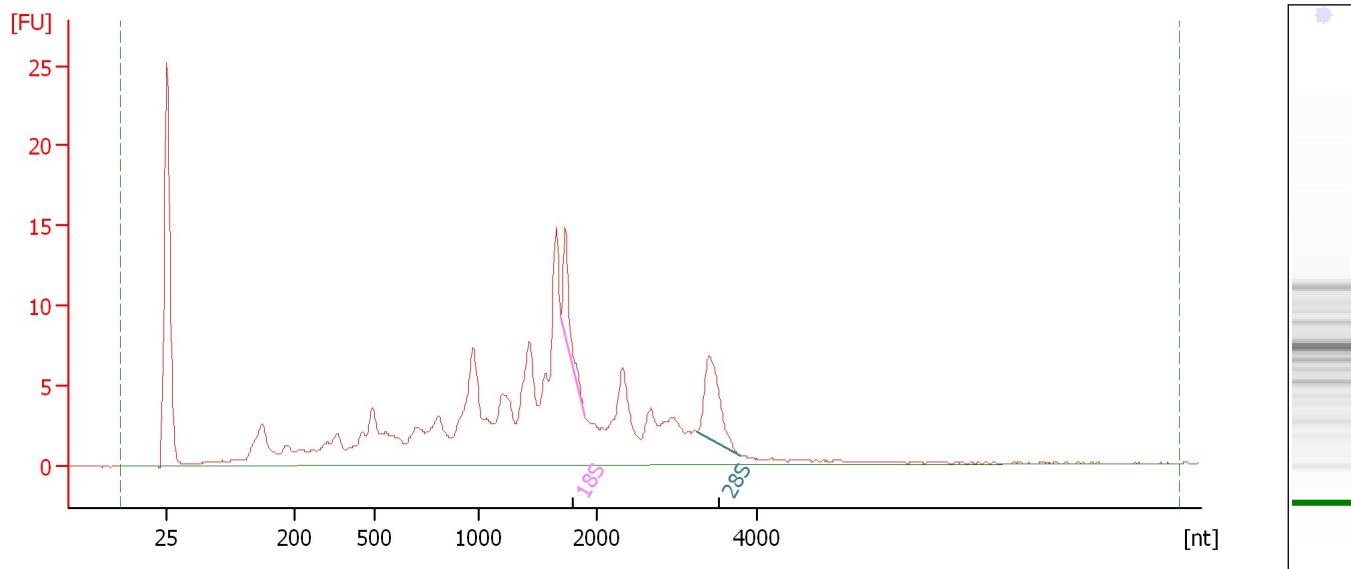
All Other Samples

Assay Class: Eukaryote Total RNA Nano  
Data Path: D:\...Eukaryote Total RNA Nano\_DE24802235\_2011-07-19\_12-45-10.xad

Created: 7/19/2011 12:45:09 PM  
Modified: 7/19/2011 1:40:44 PM

**Electropherogram Summary Continued ...**

10B17 A Spleen total RNA as received 2nd time

**Overall Results for sample 1 : 10B17 A Spleen total RNA as received 2nd time**

RNA Area: 192.5      RNA Integrity Number (RIN): 4.5 (B.02.08, Anomaly Threshold(s) manually adapted)  
RNA Concentration: 84 ng/μl  
rRNA Ratio [28s / 18s]: 1.6  
Result Flagging Color:   
Result Flagging Label: RIN: 4.50

**Fragment table for sample 1 : 10B17 A Spleen total RNA as received 2nd time**

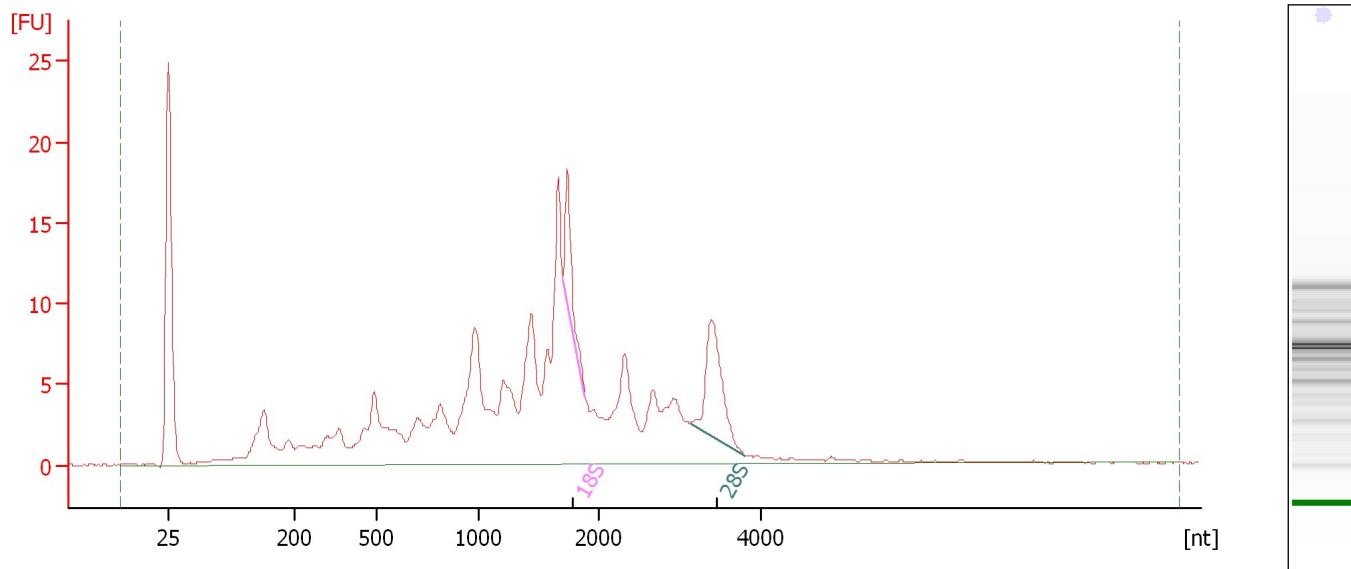
Name	Start Size [nt]	End Size [nt]	Area	% of total Area
18S	1,702	1,900	5.6	2.9
28S	3,245	3,788	8.9	4.6

Assay Class: Eukaryote Total RNA Nano  
Data Path: D:\...Eukaryote Total RNA Nano\_DE24802235\_2011-07-19\_12-45-10.xad

Created: 7/19/2011 12:45:09 PM  
Modified: 7/19/2011 1:40:44 PM

**Electropherogram Summary Continued ...**

10B17 B Spleen total RNA as received 2nd time

**Overall Results for sample 2 : 10B17 B Spleen total RNA as received 2nd time**

RNA Area:	232.6	RNA Integrity Number (RIN):	4.7 (B.02.08)
RNA Concentration:	102 ng/μl	Result Flagging Color:	<div style="background-color: #ccccff; width: 30px; height: 15px; display: inline-block;"></div>
rRNA Ratio [28s / 18s]:	2.0	Result Flagging Label:	RIN: 4.70

**Fragment table for sample 2 : 10B17 B Spleen total RNA as received 2nd time**

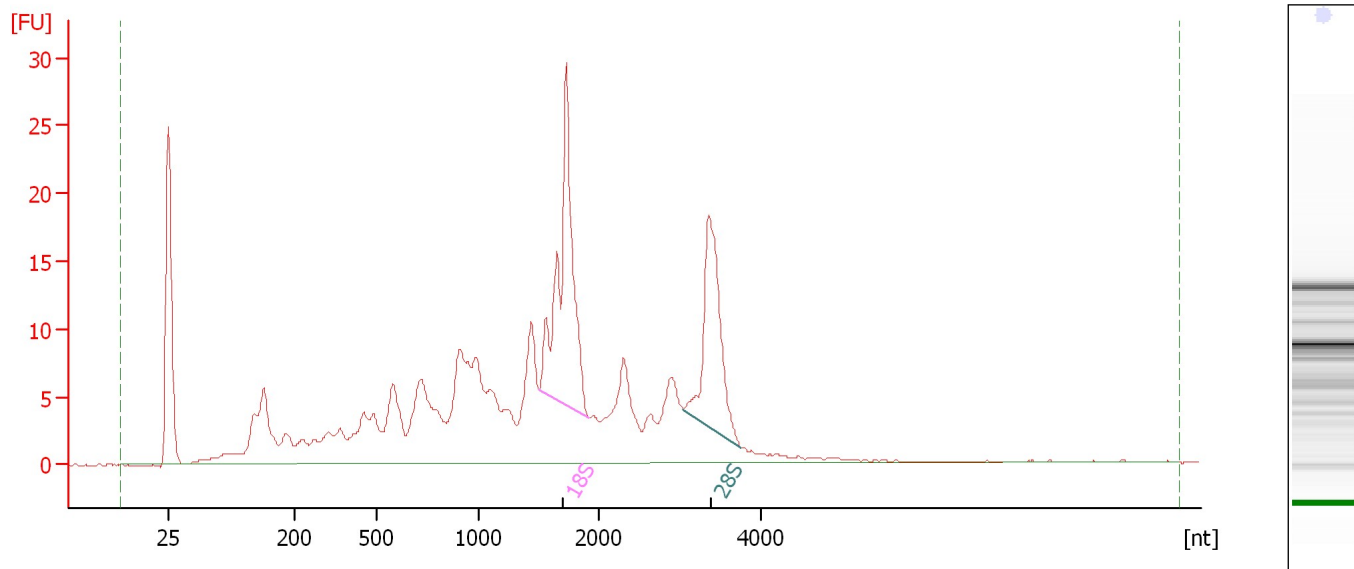
Name	Start Size [nt]	End Size [nt]	Area	% of total Area
18S	1,704	1,892	6.5	2.8
28S	3,137	3,811	13.2	5.7

Assay Class: Eukaryote Total RNA Nano  
Data Path: D:\...Eukaryote Total RNA Nano\_DE24802235\_2011-07-19\_12-45-10.xad

Created: 7/19/2011 12:45:09 PM  
Modified: 7/19/2011 1:40:44 PM

**Electropherogram Summary Continued ...**

10B18 A MesLymphNode total RNA as received 2nd time

**Overall Results for sample 3 : 10B18 A MesLymphNode total RNA as received 2nd time**

RNA Area:	330.5	RNA Integrity Number (RIN):	6.8 (B.02.08)
RNA Concentration:	144 ng/μl	Result Flagging Color:	<span style="background-color: #ccccff; border: 1px solid black; display: inline-block; width: 20px; height: 10px;"></span>
rRNA Ratio [28s / 18s]:	0.7	Result Flagging Label:	RIN: 6.80

**Fragment table for sample 3 : 10B18 A MesLymphNode total RNA as received 2nd time**

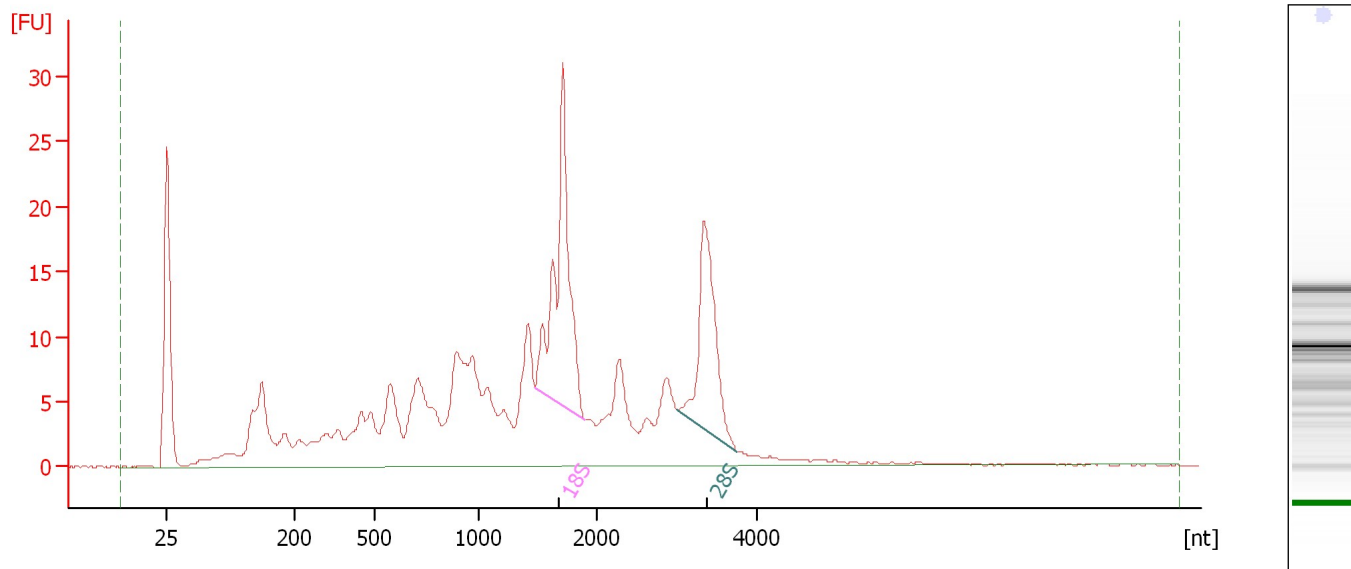
Name	Start Size [nt]	End Size [nt]	Area	% of total Area
18S	1,497	1,919	44.9	13.6
28S	3,044	3,771	29.5	8.9

Assay Class: Eukaryote Total RNA Nano  
Data Path: D:\...Eukaryote Total RNA Nano\_DE24802235\_2011-07-19\_12-45-10.xad

Created: 7/19/2011 12:45:09 PM  
Modified: 7/19/2011 1:40:44 PM

**Electropherogram Summary Continued ...**

10B18 B MesLymphNode total RNA as received 2nd time

**Overall Results for sample 4 : 10B18 B MesLymphNode total RNA as received 2nd time**

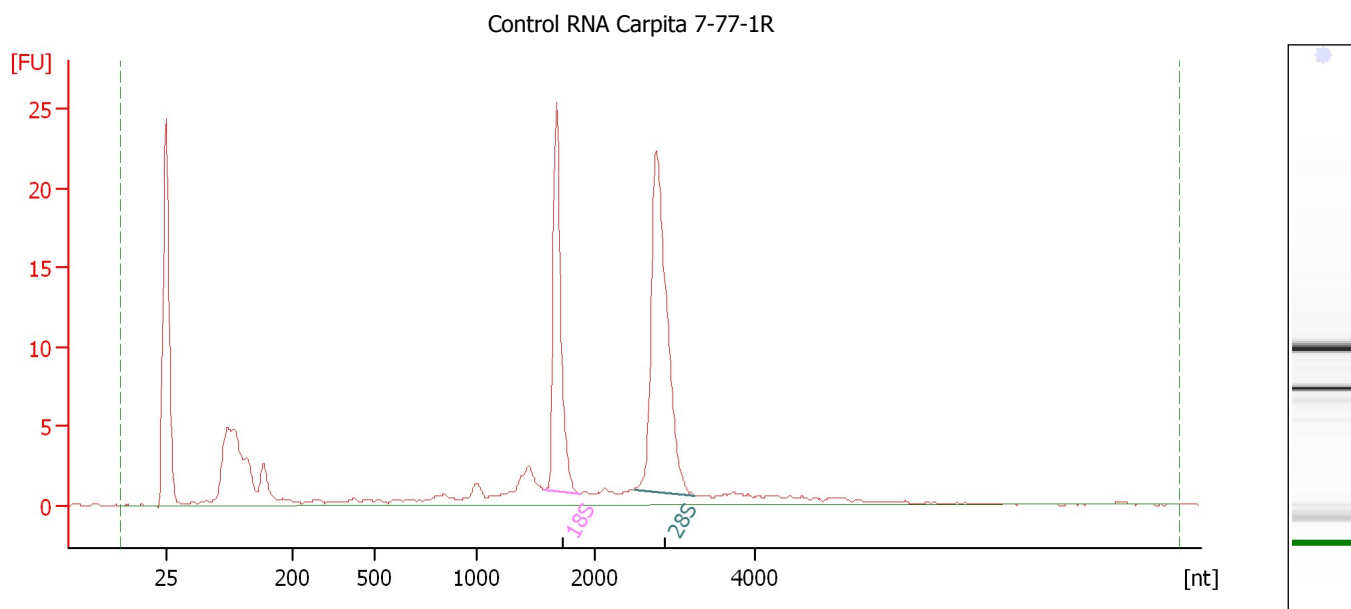
RNA Area:	351.2	RNA Integrity Number (RIN):	6.7 (B.02.08)
RNA Concentration:	154 ng/μl	Result Flagging Color:	<span style="background-color: #ccccff; border: 1px solid black; display: inline-block; width: 20px; height: 10px;"></span>
rRNA Ratio [28s / 18s]:	0.7	Result Flagging Label:	RIN: 6.70

**Fragment table for sample 4 : 10B18 B MesLymphNode total RNA as received 2nd time**

Name	Start Size [nt]	End Size [nt]	Area	% of total Area
18S	1,486	1,900	46.5	13.2
28S	3,006	3,735	30.4	8.7

Assay Class: Eukaryote Total RNA Nano  
Data Path: D:\...Eukaryote Total RNA Nano\_DE24802235\_2011-07-19\_12-45-10.xad

Created: 7/19/2011 12:45:09 PM  
Modified: 7/19/2011 1:40:44 PM

**Electropherogram Summary Continued ...****Overall Results for sample 5 : Control RNA Carpita 7-77-1R**

RNA Area:	136.4	RNA Integrity Number (RIN):	9.3 (B.02.08)
RNA Concentration:	60 ng/μl	Result Flagging Color:	<div style="background-color: #ccccff; width: 20px; height: 10px; display: inline-block;"></div>
rRNA Ratio [28S / 18S]:	1.7	Result Flagging Label:	RIN: 9.30

**Fragment table for sample 5 : Control RNA Carpita 7-77-1R**

Name	Start Size [nt]	End Size [nt]	Area	% of total Area
18S	1,583	1,881	24.6	18.1
28S	2,490	3,260	41.3	30.2

Assay Class: Eukaryote Total RNA Nano  
Data Path: D:\...Eukaryote Total RNA Nano\_DE24802235\_2011-07-19\_12-45-10.xad

Created: 7/19/2011 12:45:09 PM  
Modified: 7/19/2011 1:40:44 PM

## Curves

### Standard Curve

