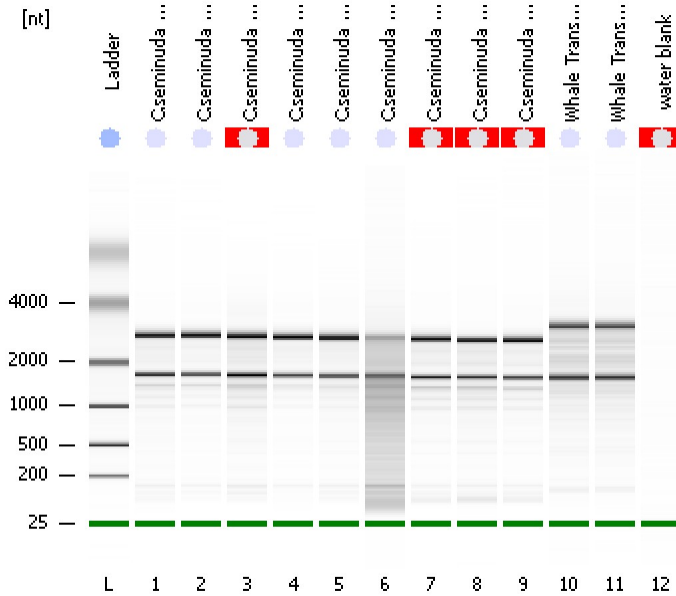


Assay Class: Eukaryote Total RNA Nano  
 Data Path: D:\...Eukaryote Total RNA Nano\_DE24802235\_2011-06-09\_16-49-29.xad

Created: 6/9/2011 4:49:29 PM  
 Modified: 6/9/2011 5:34:21 PM

**Electrophoresis File Run Summary**



Instrument Information:

Instrument Name: Ann's baby      Firmware: C.01.069  
 Serial#: DE24802235      Type: G2938B

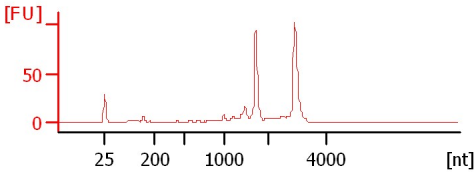
Assay Information:

Assay Origin Path: D:\Program Files\Agilent\2100 bioanalyzer\2100 expert\assays\RNA\Eukaryote Total RNA Nano Series II.xsy  
 Assay Class: Eukaryote Total RNA Nano  
 Version: 2.6  
 Assay Comments: Total RNA Analysis ng sensitivity (Eukaryote)  
 © Copyright 2003 - 2009 Agilent Technologies, Inc.

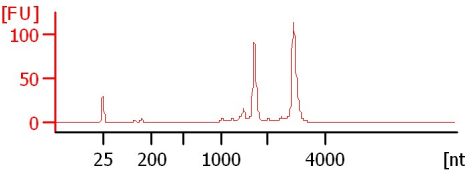
Chip Information:

Chip Lot #:      Reagent Kit Lot #:      Chip Comments:

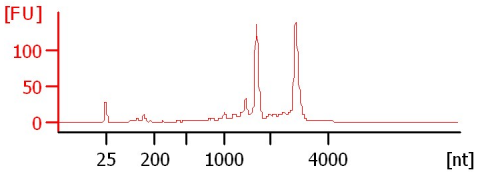
**C.seminuda Callus 11017 Initial Sample**  
 Acc.# 831  
 RIN: 8.40



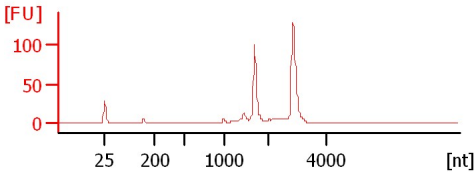
**C.seminuda Callus 11019 Initial Sample**  
 Acc.# 831  
 RIN: 9.10



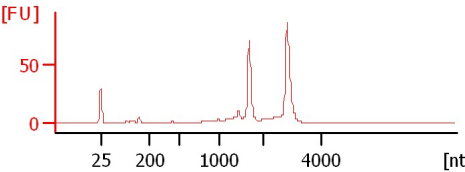
**C.seminuda Callus 11020 Initial Sample**  
 Acc.# 831  
 RIN N/A



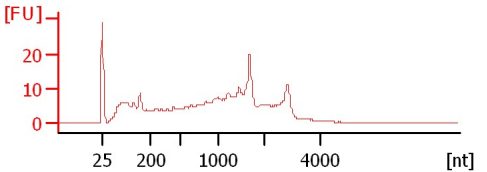
**C.seminuda Gland.Sepals 11017 Initial...**  
 Acc.# 832  
 RIN: 9.40



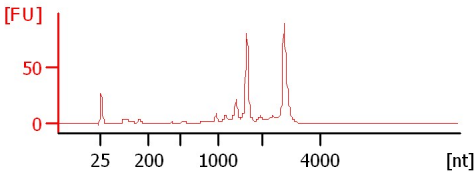
**C.seminuda Gland.Sepals 11019 Initial...**  
 Acc.# 832  
 RIN: 8.80



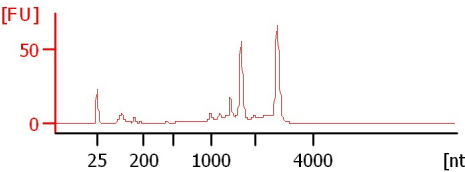
**C.seminuda Gland.Sepals 11020 Initial...**  
 Acc.# 832  
 RIN: 5.10



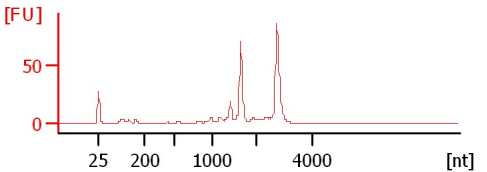
**C.seminuda Sepals&Petals 11017 Initia...**  
 Acc.# 833  
 RIN N/A



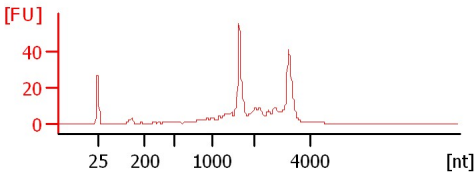
**C.seminuda Sepals&Petals 11019 Initia...**  
 Acc.# 833  
 RIN N/A



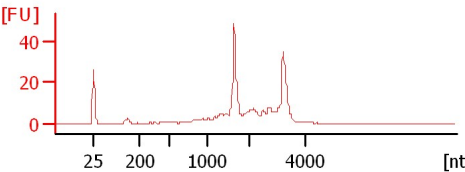
**C.seminuda Sepals&Petals 11020 Initia...**  
 Acc.# 833  
 RIN N/A



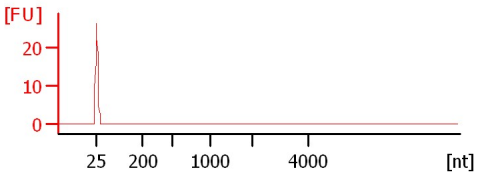
**Whale Transcriptome Liver-A 10B16**  
 RIN:8



**Whale Transcriptome Liver-B 10B16**  
 RIN: 7.90















**water blank**  
 RIN N/A



Assay Class: Eukaryote Total RNA Nano  
 Data Path: D:\...Eukaryote Total RNA Nano\_DE24802235\_2011-06-09\_16-49-29.xad

Created: 6/9/2011 4:49:29 PM  
 Modified: 6/9/2011 5:34:21 PM

**Electrophoresis File Run Summary (Chip Summary)**

Sample Name	Sample Comment	Status	Result Labels	Result Color
C.seminuda Callus 11017 Initial Sample	Acc.# 831	✓	RIN: 8.40	
C.seminuda Callus 11019 Initial Sample	Acc.# 831	✓	RIN: 9.10	
C.seminuda Callus 11020 Initial Sample	Acc.# 831	✓	RIN N/A	
C.seminuda Gland.Sepals 11017 Initial Sample	Acc.# 832	✓	RIN: 9.40	
C.seminuda Gland.Sepals 11019 Initial Sample	Acc.# 832	✓	RIN: 8.80	
C.seminuda Gland.Sepals 11020 Initial Sample	Acc.# 832	✓	RIN: 5.10	
C.seminuda Sepals&Petals 11017 Initial Sample	Acc.# 833	✓	RIN N/A	
C.seminuda Sepals&Petals 11019 Initial Sample	Acc.# 833	✓	RIN N/A	
C.seminuda Sepals&Petals 11020 Initial Sample	Acc.# 833	✓	RIN N/A	
Whale Transcriptome Liver-A 10B16		✓	RIN:8	
Whale Transcriptome Liver-B 10B16		✓	RIN: 7.90	
water blank		✓	RIN N/A	
Ladder		✓	All Other Samples	

**Chip Lot #**

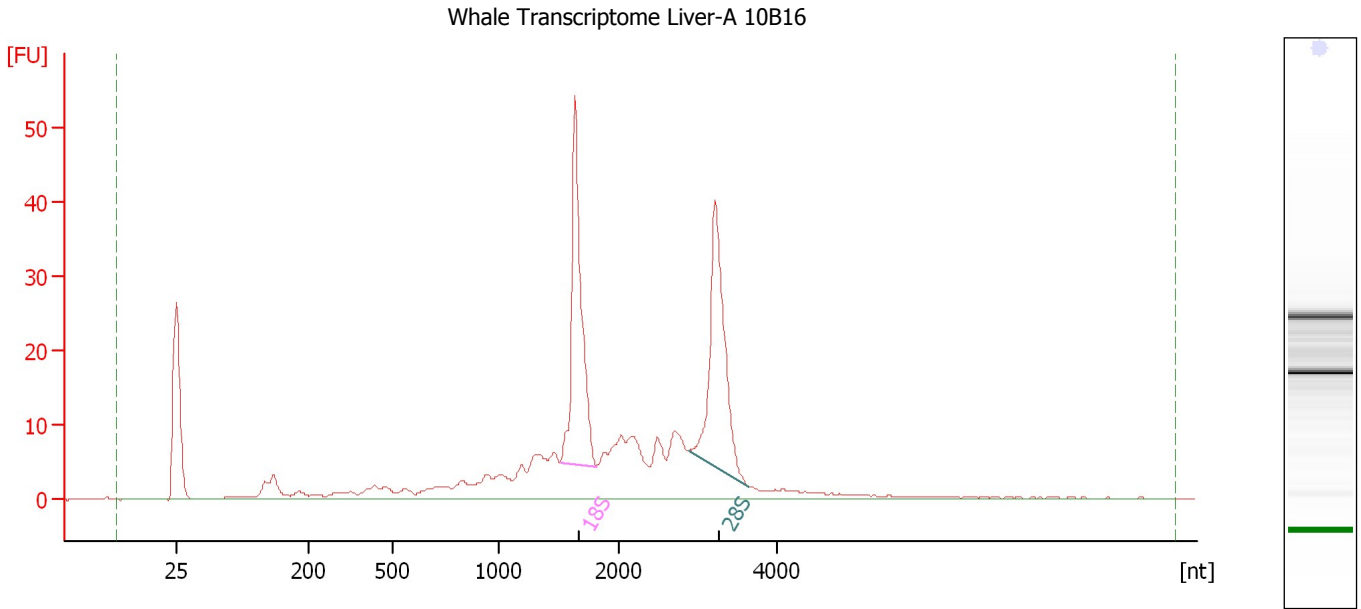
**Reagent Kit Lot #**

**Chip Comments :**

Assay Class: Eukaryote Total RNA Nano  
 Data Path: D:\...Eukaryote Total RNA Nano\_DE24802235\_2011-06-09\_16-49-29.xad

Created: 6/9/2011 4:49:29 PM  
 Modified: 6/9/2011 5:34:21 PM

**Electropherogram Summary**



**Overall Results for sample 10 : Whale Transcriptome Liver-A 10B16**

RNA Area: 324.1 RNA Integrity Number (RIN): 8 (B.02.08)  
 RNA Concentration: 134 ng/μl Result Flagging Color:   
 rRNA Ratio [28s / 18s]: 1.0 Result Flagging Label: RIN:8

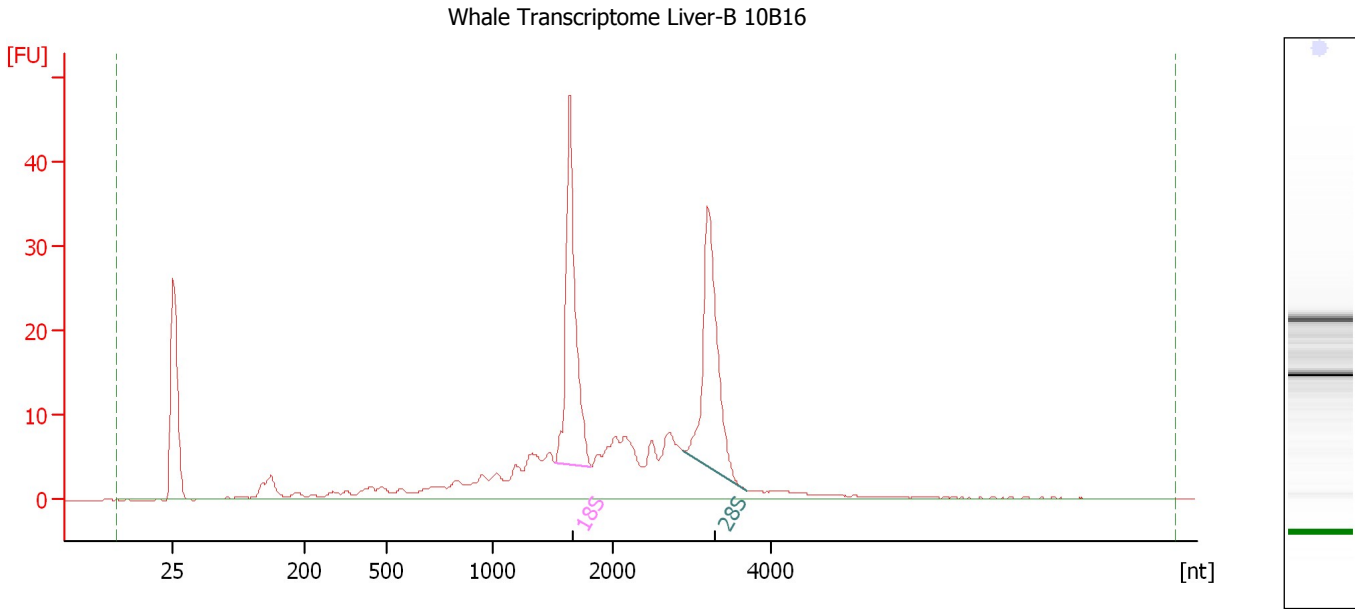
**Fragment table for sample 10 : Whale Transcriptome Liver-A 10B16**

Name	Start Size [nt]	End Size [nt]	Area	% of total Area
18S	1,514	1,813	61.6	19.0
28S	2,873	3,628	59.0	18.2

Assay Class: Eukaryote Total RNA Nano  
 Data Path: D:\...Eukaryote Total RNA Nano\_DE24802235\_2011-06-09\_16-49-29.xad

Created: 6/9/2011 4:49:29 PM  
 Modified: 6/9/2011 5:34:21 PM

**Electropherogram Summary Continued ...**



**Overall Results for sample 11 : Whale Transcriptome Liver-B 10B16**

RNA Area:	282.3	RNA Integrity Number (RIN):	7.9 (B.02.08)
RNA Concentration:	117 ng/μl	Result Flagging Color:	<span style="background-color: #ccccff; border: 1px solid black; display: inline-block; width: 20px; height: 10px;"></span>
rRNA Ratio [28s / 18s]:	0.9	Result Flagging Label:	RIN: 7.90

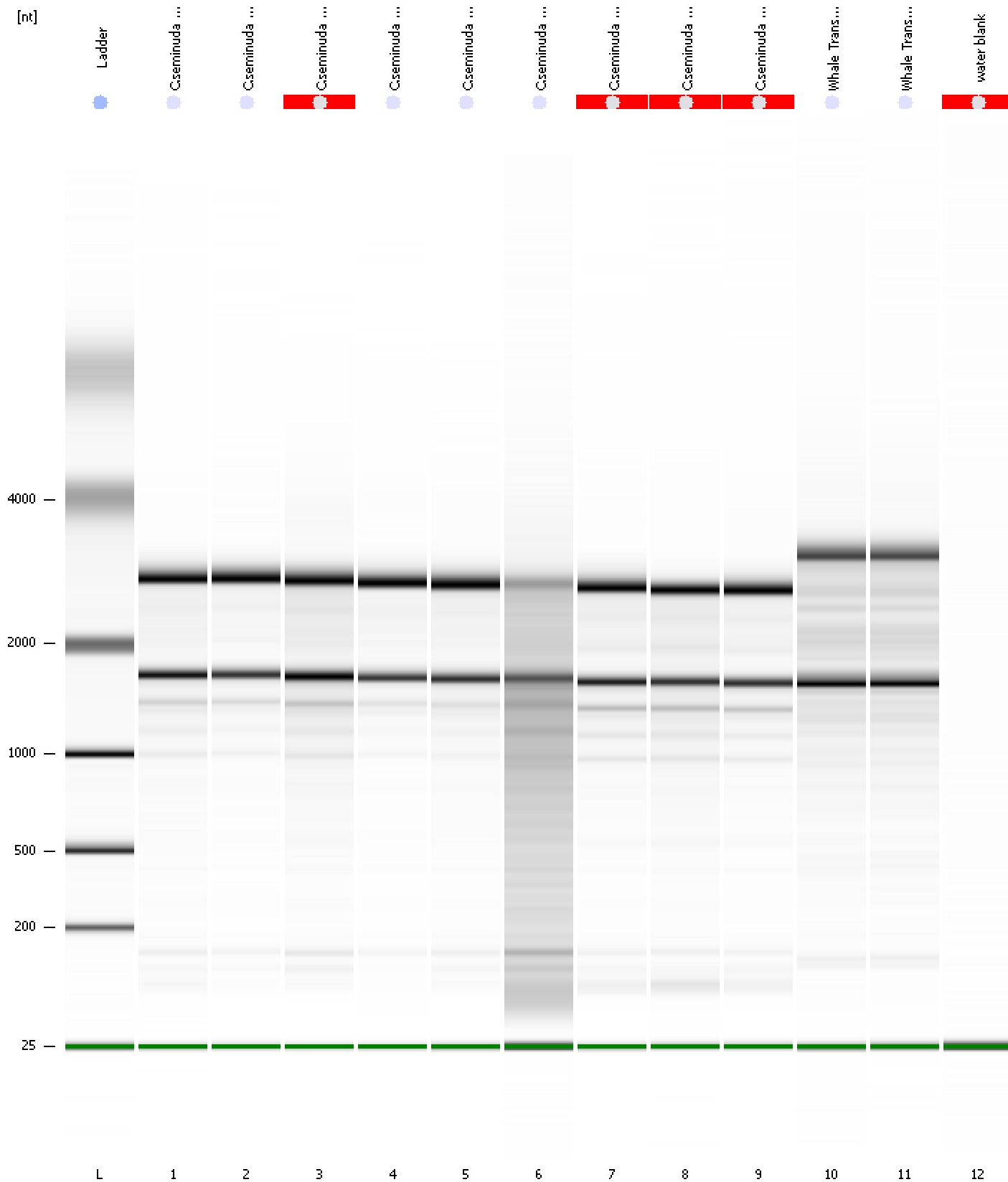
**Fragment table for sample 11 : Whale Transcriptome Liver-B 10B16**

Name	Start Size [nt]	End Size [nt]	Area	% of total Area
18S	1,517	1,819	52.4	18.5
28S	2,890	3,704	49.4	17.5

Assay Class: Eukaryote Total RNA Nano  
 Data Path: D:\...Eukaryote Total RNA Nano\_DE24802235\_2011-06-09\_16-49-29.xad

Created: 6/9/2011 4:49:29 PM  
 Modified: 6/9/2011 5:34:21 PM

**Gel Image**



Assay Class: Eukaryote Total RNA Nano  
Data Path: D:\...Eukaryote Total RNA Nano\_DE24802235\_2011-06-09\_16-49-29.xad

Created: 6/9/2011 4:49:29 PM  
Modified: 6/9/2011 5:34:21 PM

**Curves**

**Standard Curve**

